

Hancock County, Iowa

Horizontal Datum: **NAD 83(2011)** - Vertical Datum: **NAVD 1988**
Iowa State Plane North Zone (1401)
Iowa Regional Coordinate System, Zone 2. Mason City (LCC)
US Survey Feet
2015

Point Name: **14**

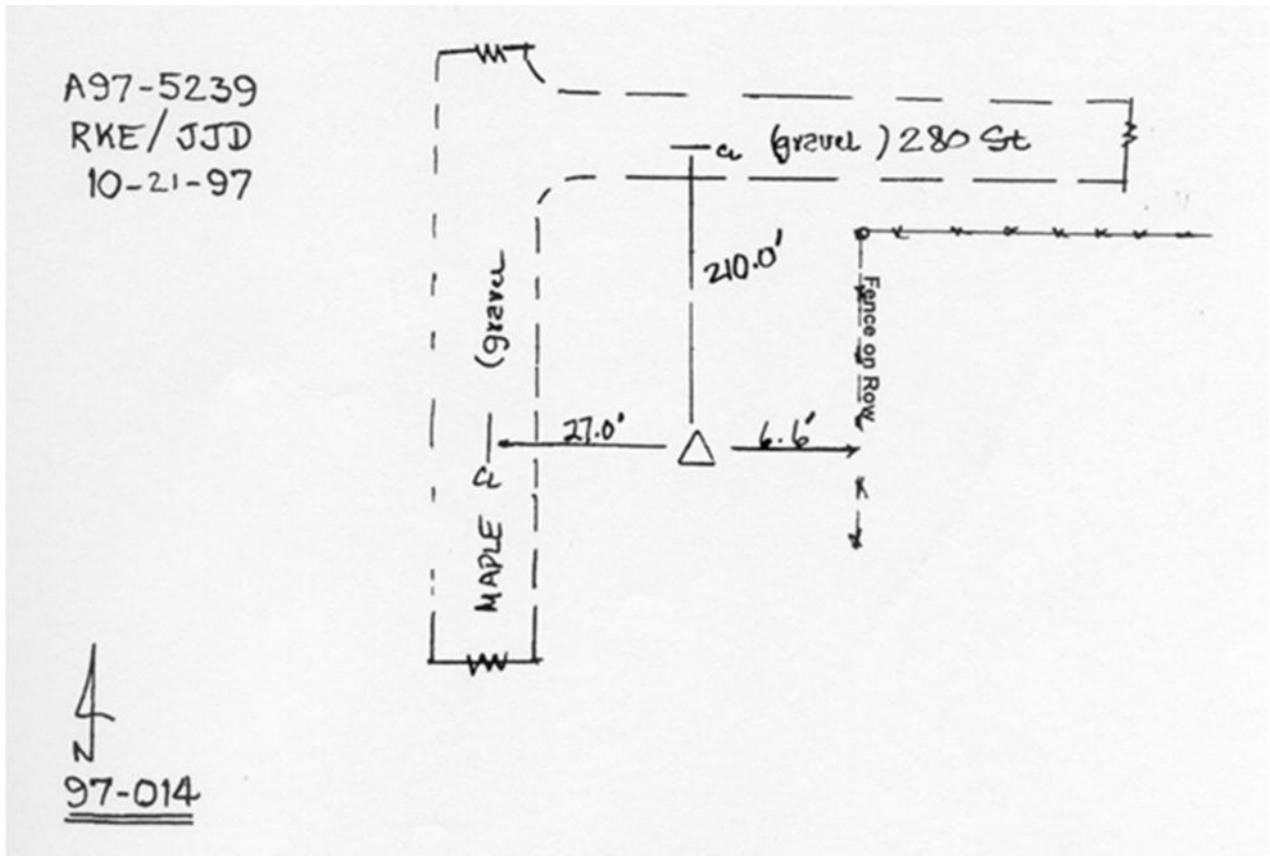
Designation: 97-014 HANCOCK CO GPS CONTROL PT (Set by ASI in 1997)

NAD 83(NA2011) Latitude: **N43°10'07.80066"** Longitude: **W93°44'00.84683"**
NAVD 88 Ortho Height: **1207.680sft** Ellip. Ht: **1110.807sft** Geoid12A

Iowa North Zone (1401) Northing: **3889097.856sft** Easting: **4858937.651sft**
Mapping Angle: **-0°09'30"** Combination Scale Factor: **0.999930594**

laRCS Zone 2 Northing: **9802330.714sft** Easting: **12237589.781sft**
Mapping Angle: **-00° 40' 22"** Combination Scale Factor: **0.999989811**

Monument Type: Existing Berntsen Top Security Rod Monument with a 2-1/2" dia. domed cap and a permanent magnet encased in a 5" dia. PVC pipe with a NGS style aluminum access cover.



This document was prepared by Dan Corbin, Inc. on April 30, 2015 for Hancock County, Iowa.