

Hancock County, Iowa

Horizontal Datum: **NAD 83(2011)** - Vertical Datum: **NAVD 1988**
Iowa State Plane North Zone (1401)
Iowa Regional Coordinate System, Zone 2. Mason City (LCC)
US Survey Feet
2015

Point Name: **26**

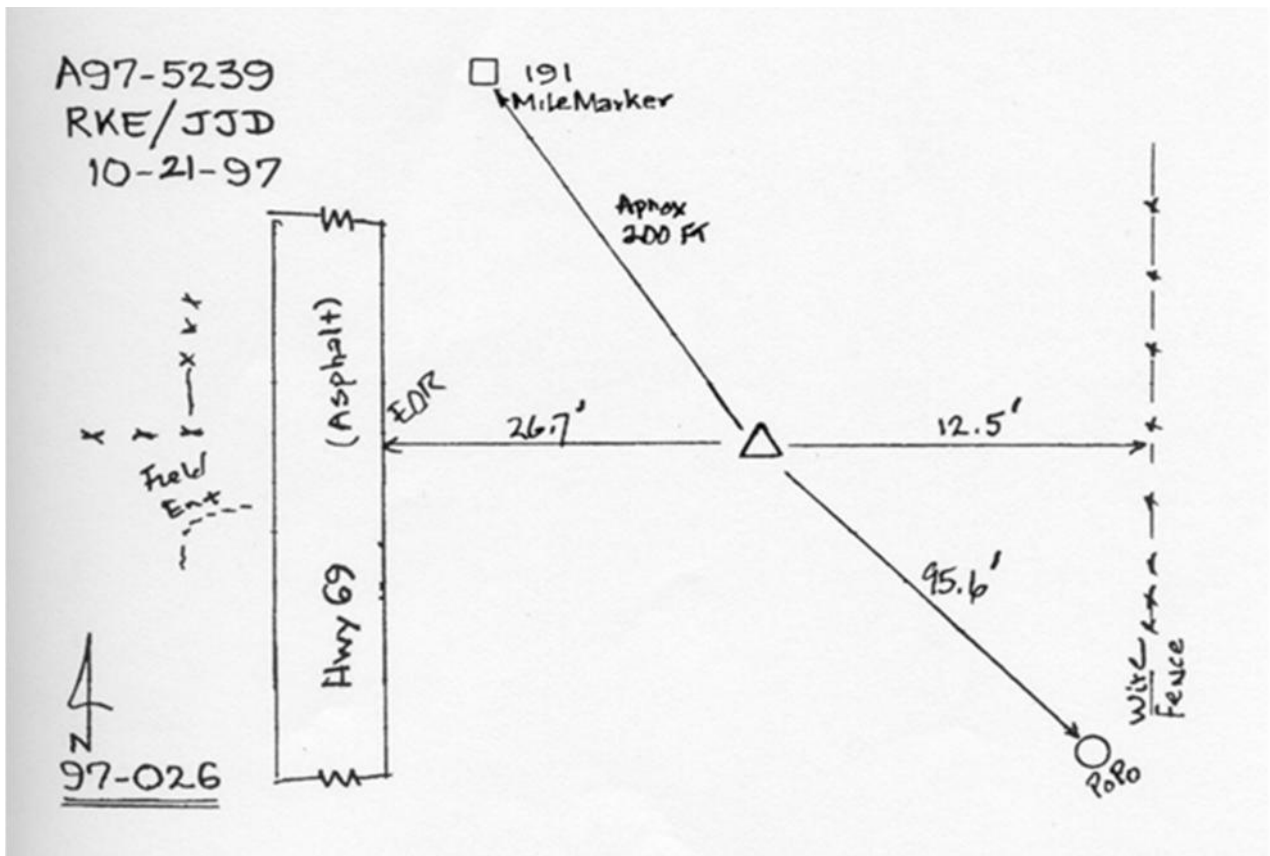
Designation: 97-026 HANCOCK CO GPS CONTROL PT (Set by ASI in 1997)

NAD 83(NA2011) Latitude: **N43°04'59.59777"** Longitude: **W93°36'57.78545"**
NAVD 88 Ortho Height: **1207.130sft** Ellip. Ht: **1111.229sft** Geoid12A

Iowa North Zone (1401) Northing: **3857829.518sft** Easting: **4890246.451sft**
Mapping Angle: **-0°04'43"** Combination Scale Factor: **0.999918619**

IaRCS Zone 2 Northing: **9770780.576sft** Easting: **12268618.749sft**
Mapping Angle: **-00° 35' 33"** Combination Scale Factor: **0.999990845**

Monument Type: Existing Berntsen Top Security Rod Monument with a 2-1/2" dia. domed cap and a permanent magnet encased in a 5" dia. PVC pipe with a NGS style aluminum access cover.



This document was prepared by Dan Corbin, Inc. on April 30, 2015 for Hancock County, Iowa.