

Hancock County, Iowa

Horizontal Datum: **NAD 83(2011)** - Vertical Datum: **NAVD 1988**
Iowa State Plane North Zone (1401)
Iowa Regional Coordinate System, Zone 2. Mason City (LCC)
US Survey Feet
2015

Point Name: **27**

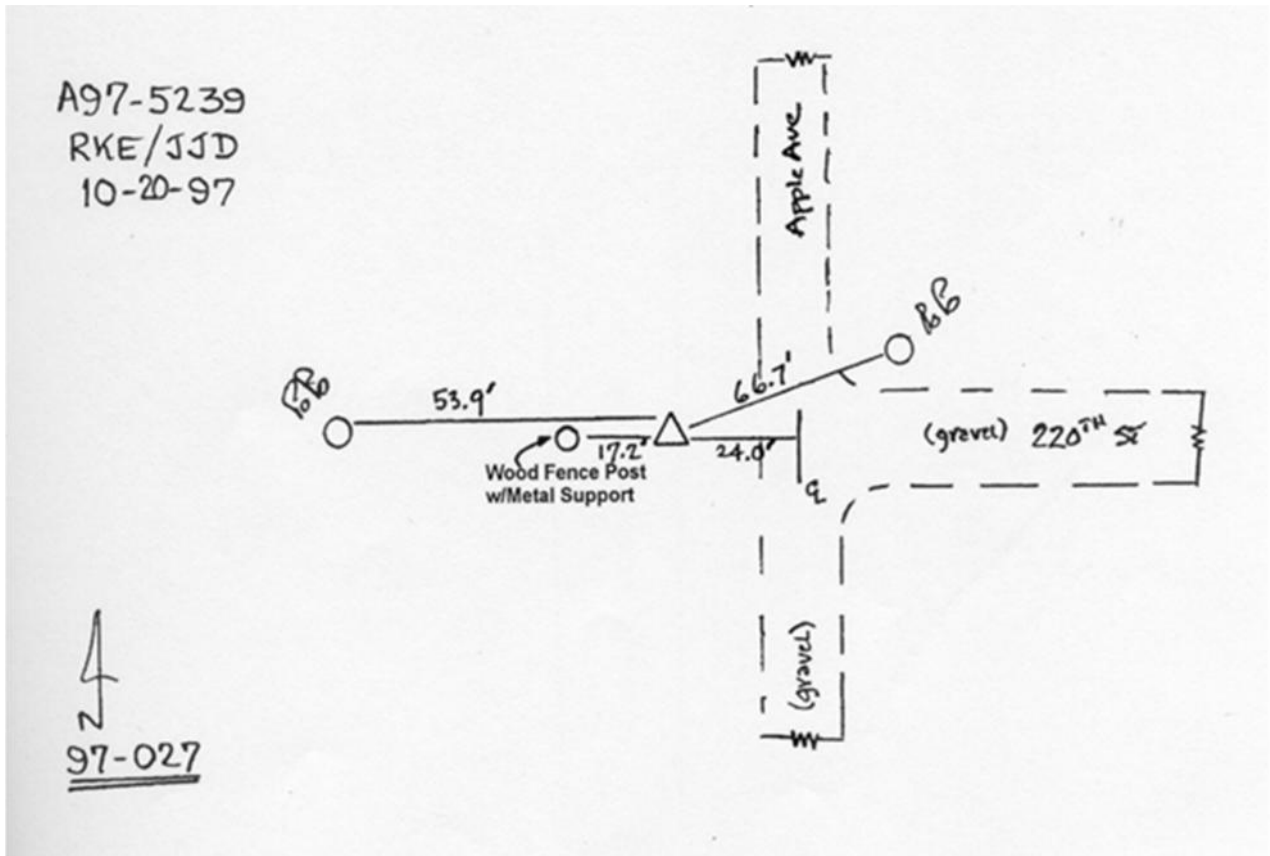
Designation: 97-027 HANCOCK CO GPS CONTROL PT (Set by ASI in 1997)

NAD 83(NA2011) Latitude: **N43°04'59.23158"** Longitude: **W93°29'52.28698"**
NAVD 88 Ortho Height: **1256.420sft** Ellip. Ht: **1162.345sft** Geoid12A

Iowa North Zone (1401) Northing: **3857771.171sft** Easting: **4921822.379sft**
Mapping Angle: **0°00'05"** Combination Scale Factor: **0.999916167**

IaRCS Zone 2 Northing: **9770439.244sft** Easting: **12300195.172sft**
Mapping Angle: **-00° 30' 42"** Combination Scale Factor: **0.999988400**

Monument Type: Existing Berntsen Top Security Rod Monument with a 2-1/2" dia. domed cap and a permanent magnet encased in a 5" dia. PVC pipe with a NGS style aluminum access cover.



This document was prepared by Dan Corbin, Inc. on April 30, 2015 for Hancock County, Iowa.