

Hancock County, Iowa

Horizontal Datum: **NAD 83(2011)** - Vertical Datum: **NAVD 1988**
Iowa State Plane North Zone (1401)
Iowa Regional Coordinate System, Zone 2. Mason City (LCC)
US Survey Feet
2015

Point Name: **31**

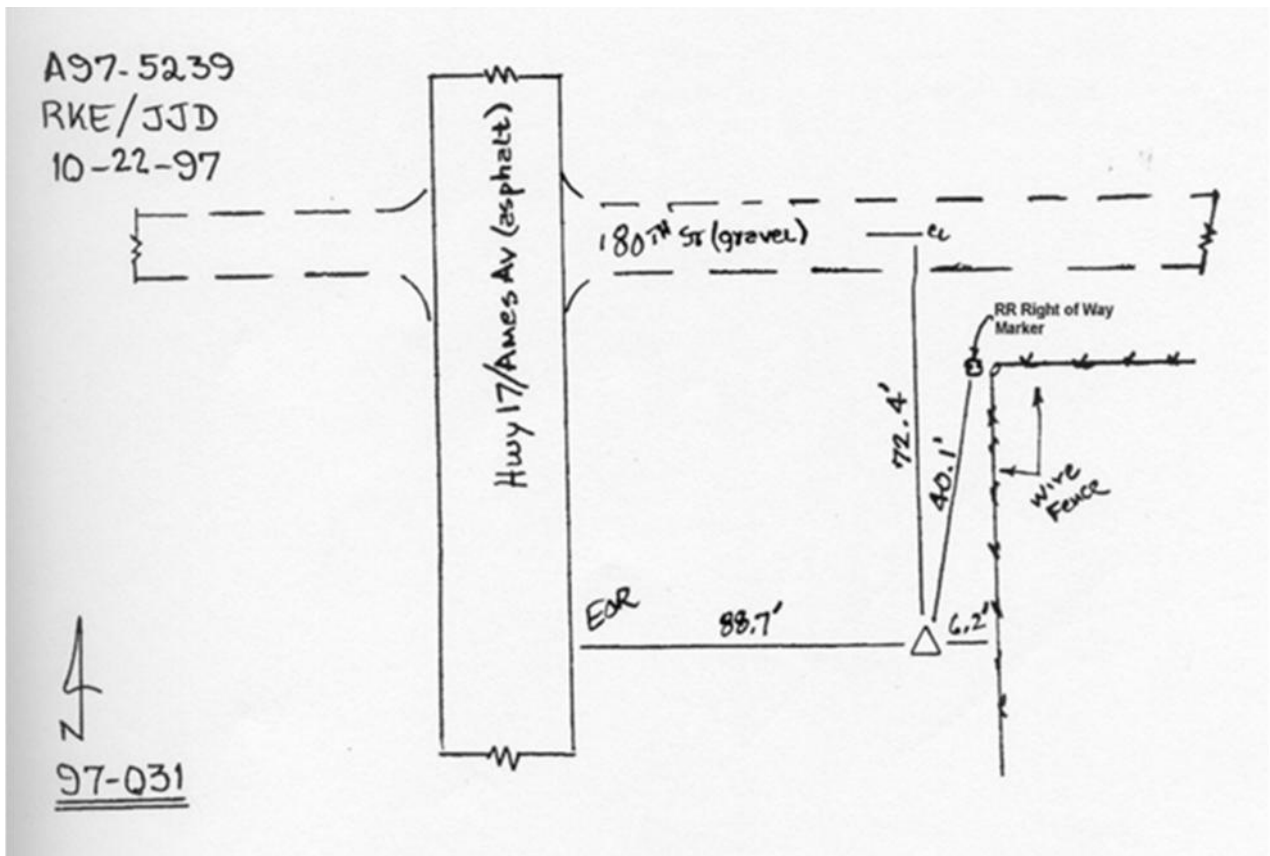
Designation: 97-031 HANCOCK CO GPS CONTROL PT (Set by ASI in 1997)

NAD 83(NA2011) Latitude: **N43°01'22.19809"** Longitude: **W93°58'14.19699"**
NAVD 88 Ortho Height: **1170.470sft** Ellip. Ht: **1074.126sft** Geoid12A

Iowa North Zone (1401) Northing: **3836148.707sft** Easting: **4795402.984sft**
Mapping Angle: **-0°19'08"** Combination Scale Factor: **0.999913303**

laRCS Zone 2 Northing: **9749951.460sft** Easting: **12173576.935sft**
Mapping Angle: **-00° 50' 06"** Combination Scale Factor: **0.999994702**

Monument Type: Existing Berntsen Top Security Rod Monument with a 2-1/2" dia. domed cap and a permanent magnet encased in a 5" dia. PVC pipe with a NGS style aluminum access cover.



This document was prepared by Dan Corbin, Inc. on April 30, 2015 for Hancock County, Iowa.