

**Hancock County, Iowa**

Horizontal Datum: **NAD 83(2011)** - Vertical Datum: **NAVD 1988**  
Iowa State Plane North Zone (1401)  
Iowa Regional Coordinate System, Zone 2. Mason City (LCC)  
US Survey Feet  
**2015**

Point Name: **32**

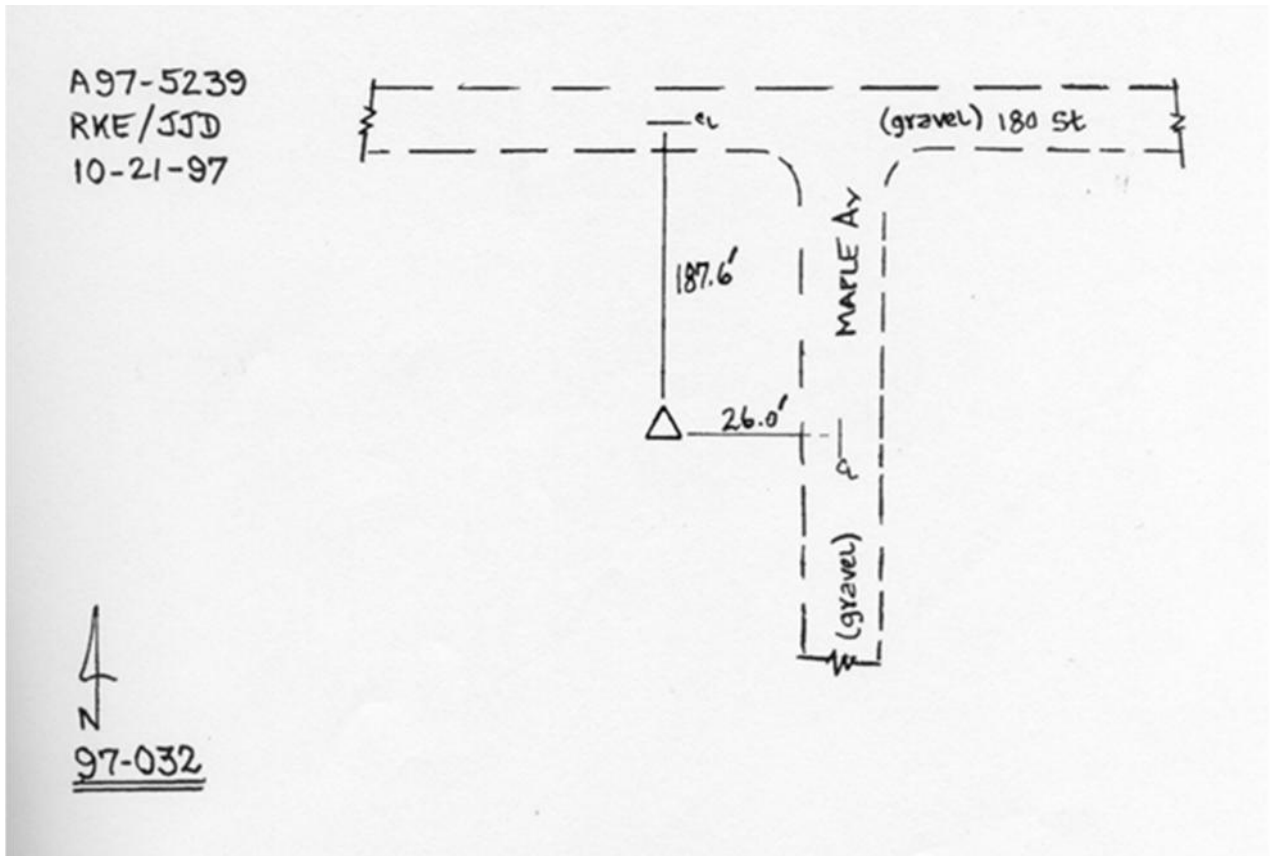
**Designation:** 97-032 HANCOCK CO GPS CONTROL PT (Set by ASI in 1997)

NAD 83(NA2011) Latitude: **N43°01'24.78249"** Longitude: **W93°44'02.37272"**  
NAVD 88 Ortho Height: **1215.650sft** Ellip. Ht: **1119.409sft** **Geoid12A**

**Iowa North Zone (1401)** Northing: **3836146.665sft** Easting: **4858678.009sft**  
Mapping Angle: **-0°09'31"** Combination Scale Factor: **0.999911221**

**laRCS Zone 2** Northing: **9749380.261sft** Easting: **12236854.541sft**  
Mapping Angle: **-00° 40' 23"** Combination Scale Factor: **0.999992503**

**Monument Type:** Existing Berntsen Top Security Rod Monument with a 2-1/2" dia. domed cap and a permanent magnet encased in a 5" dia. PVC pipe with a NGS style aluminum access cover.



*This document was prepared by Dan Corbin, Inc. on April 30, 2015 for Hancock County, Iowa.*