

**Hancock County, Iowa**

Horizontal Datum: **NAD 83(2011)** - Vertical Datum: **NAVD 1988**  
Iowa State Plane North Zone (1401)  
Iowa Regional Coordinate System, Zone 2. Mason City (LCC)  
US Survey Feet  
**2015**

Point Name: **35**

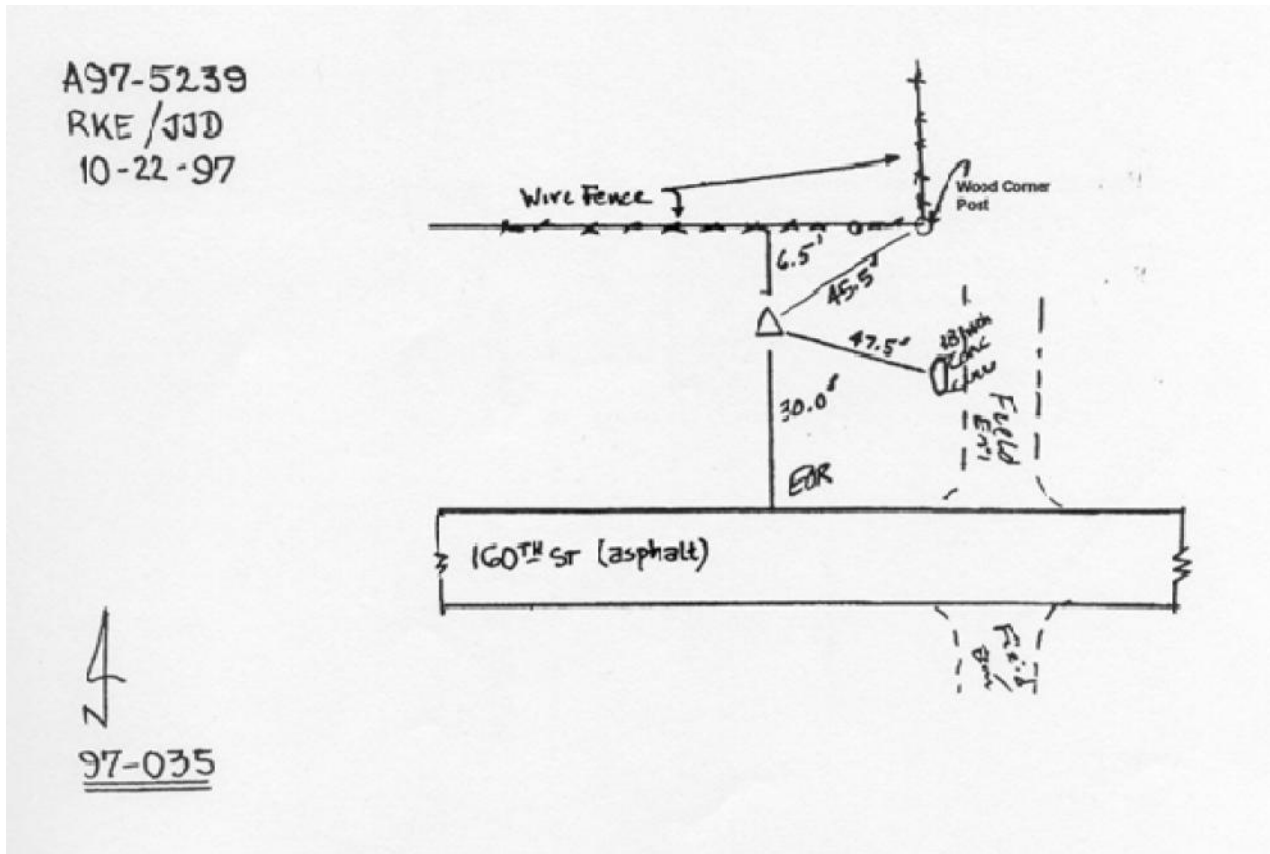
**Designation:** 97-035 HANCOCK CO GPS CONTROL PT (Set by ASI in 1997)

NAD 83(NA2011) Latitude: **N42°59'42.69940"** Longitude: **W93°51'09.12203"**  
NAVD 88 Ortho Height: **1159.930sft** Ellip. Ht: **1063.517sft** Geoid12A

**Iowa North Zone (1401)** Northing: **3825921.829sft** Easting: **4826935.850sft**  
Mapping Angle: **-0°14'20"** Combination Scale Factor: **0.999910938**

**laRCS Zone 2** Northing: **9739440.295sft** Easting: **12205019.104sft**  
Mapping Angle: **-00° 45' 15"** Combination Scale Factor: **0.999996531**

**Monument Type:** Existing Berntsen Top Security Rod Monument with a 2-1/2" dia. domed cap and a permanent magnet encased in a 5" dia. PVC pipe with a NGS style aluminum access cover.



*This document was prepared by Dan Corbin, Inc. on April 30, 2015 for Hancock County, Iowa.*