

Hancock County, Iowa

Horizontal Datum: **NAD 83(2011)** - Vertical Datum: **NAVD 1988**
Iowa State Plane North Zone (1401)
Iowa Regional Coordinate System, Zone 2. Mason City (LCC)
US Survey Feet
2015

Point Name: **36**

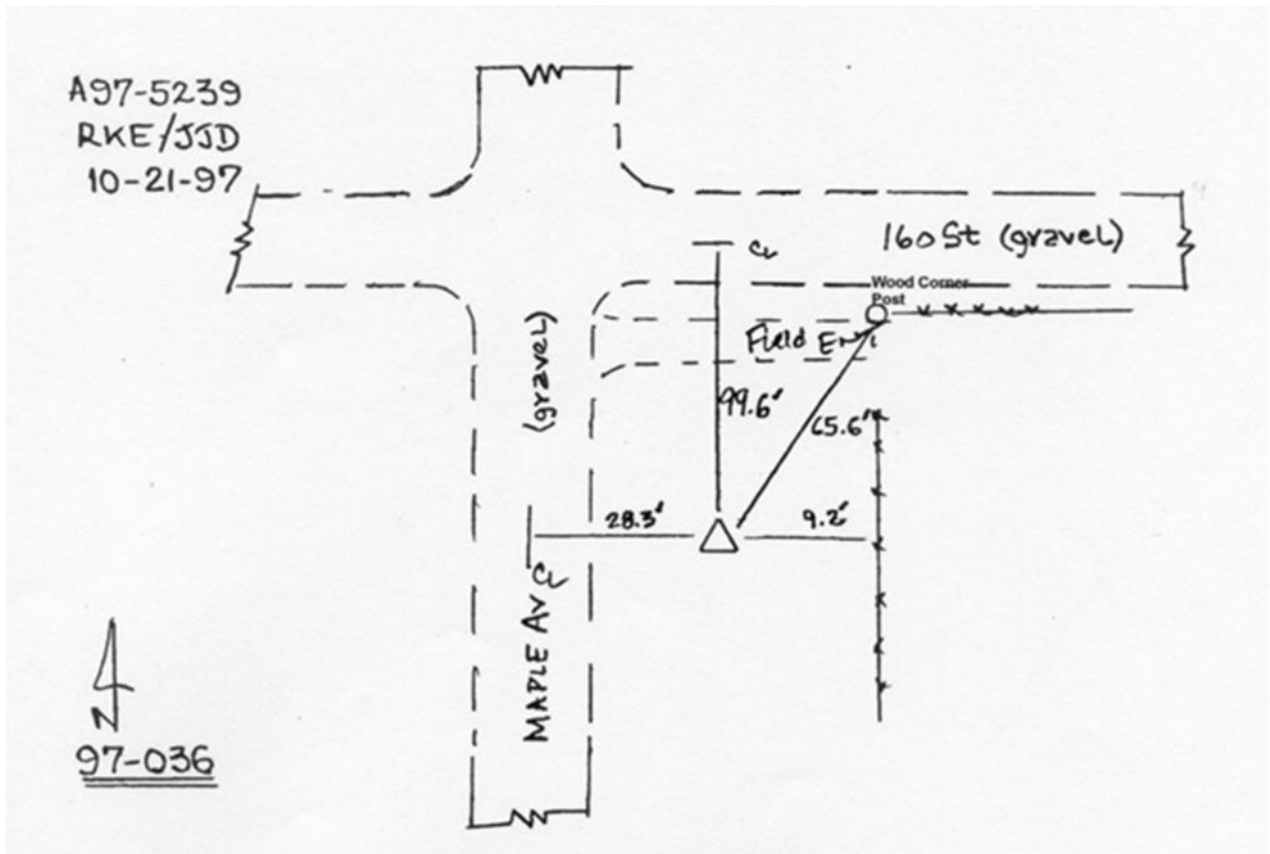
Designation: 97-036 HANCOCK CO GPS CONTROL PT (Set by ASI in 1997)

NAD 83(NA2011) Latitude: **N42°59'41.63364"** Longitude: **W93°44'02.57367"**
NAVD 88 Ortho Height: **1229.170sft** Ellip. Ht: **1133.210sft** Geoid12A

Iowa North Zone (1401) Northing: **3825703.960sft** Easting: **4858634.172sft**
Mapping Angle: **-0°09'31"** Combination Scale Factor: **0.999907583**

laRCS Zone 2 Northing: **9738937.497sft** Easting: **12236716.906sft**
Mapping Angle: **-00° 40' 24"** Combination Scale Factor: **0.999993209**

Monument Type: Existing Berntsen Top Security Rod Monument with a 2-1/2" dia. domed cap and a permanent magnet encased in a 5" dia. PVC pipe with a NGS style aluminum access cover.



This document was prepared by Dan Corbin, Inc. on April 30, 2015 for Hancock County, Iowa.