

Hancock County, Iowa

Horizontal Datum: **NAD 83(2011)** - Vertical Datum: **NAVD 1988**
Iowa State Plane North Zone (1401)
Iowa Regional Coordinate System, Zone 2. Mason City (LCC)
US Survey Feet
2015

Point Name: **44**

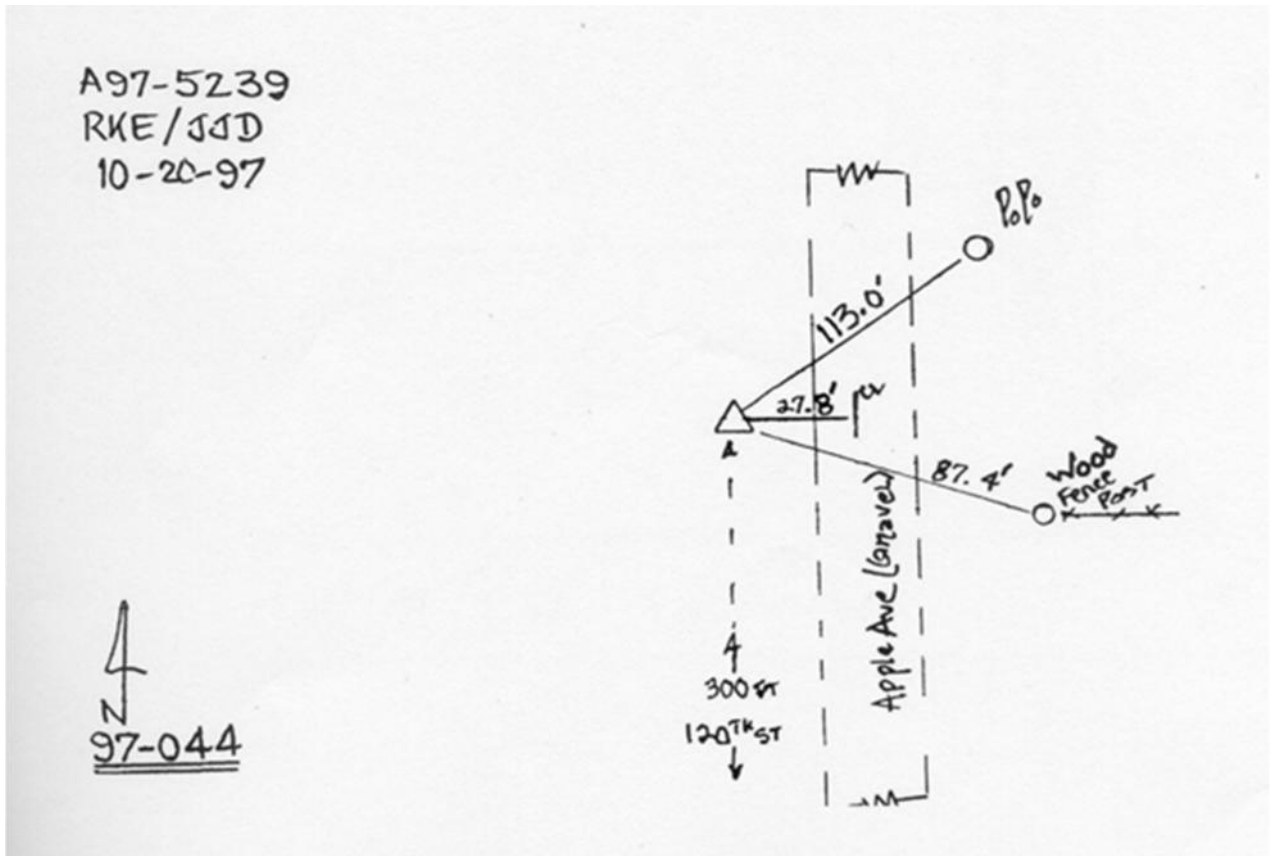
Designation: 97-044 HANCOCK CO GPS CONTROL PT (Set by ASI in 1997)

NAD 83(NA2011) Latitude: **N42°56'17.32708"** Longitude: **W93°29'54.21407"**
NAVD 88 Ortho Height: **1268.600sft** Ellip. Ht: **1176.637sft** Geoid12A

Iowa North Zone (1401) Northing: **3804933.537sft** Easting: **4921680.375sft**
Mapping Angle: **0°00'04"** Combination Scale Factor: **0.999900351**

IaRCS Zone 2 Northing: **9717600.591sft** Easting: **12299579.971sft**
Mapping Angle: **-00° 30' 43"** Combination Scale Factor: **0.999994571**

Monument Type: Existing Berntsen Top Security Rod Monument with a 2-1/2" dia. domed cap and a permanent magnet encased in a 5" dia. PVC pipe with a NGS style aluminum access cover.



This document was prepared by Dan Corbin, Inc. on April 30, 2015 for Hancock County, Iowa.