

Hancock County, Iowa

Horizontal Datum: **NAD 83(2011)** - Vertical Datum: **NAVD 1988**
Iowa State Plane North Zone (1401)
Iowa Regional Coordinate System, Zone 2. Mason City (LCC)
US Survey Feet
2015

Point Name: **49**

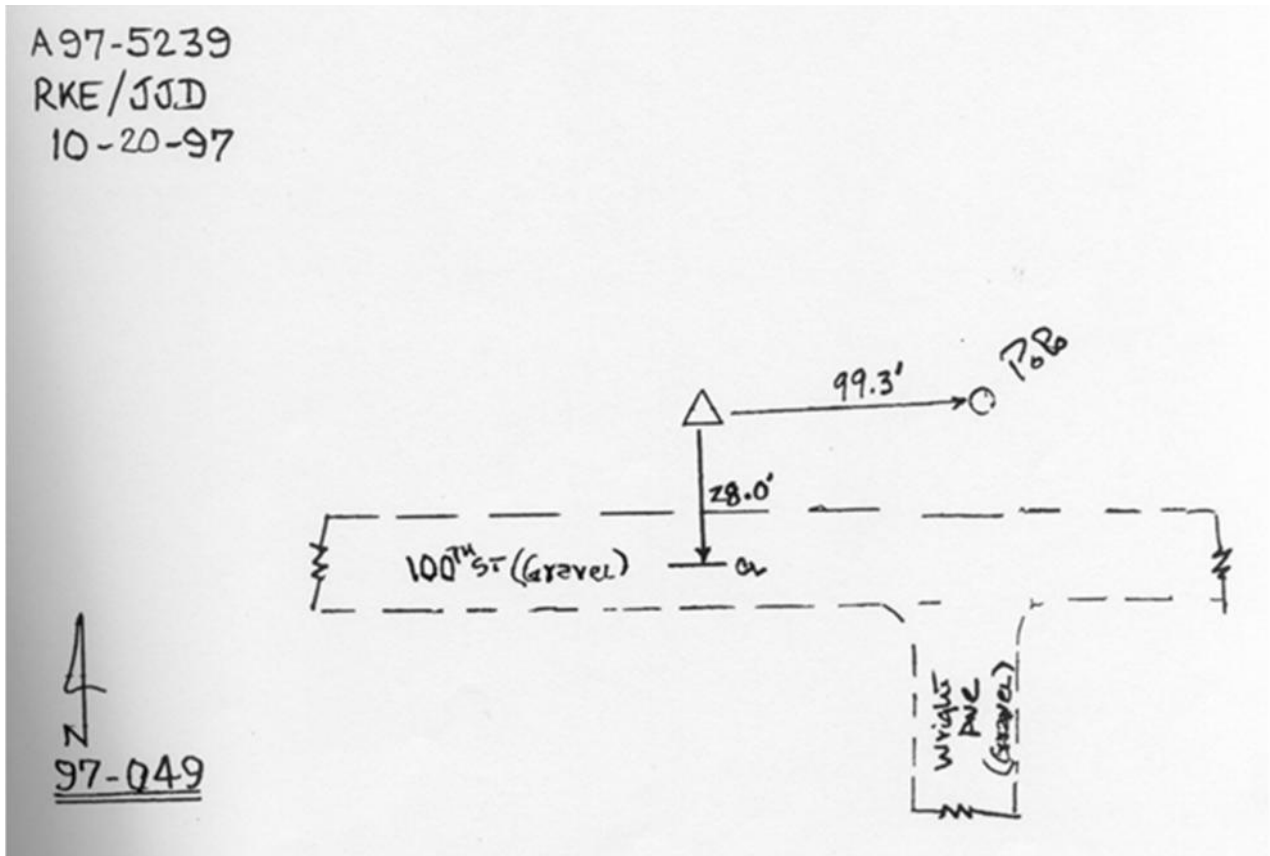
Designation: 97-049 HANCOCK CO GPS CONTROL PT (Set by ASI in 1997)

NAD 83(NA2011) Latitude: **N42°54'30.83946"** Longitude: **W93°29'56.52204"**
NAVD 88 Ortho Height: **1267.760sft** Ellip. Ht: **1176.200sft** Geoid12A

Iowa North Zone (1401) Northing: **3794152.977sft** Easting: **4921508.824sft**
Mapping Angle: **0°00'02"** Combination Scale Factor: **0.999898072**

laRCS Zone 2 Northing: **9706820.958sft** Easting: **12299311.863sft**
Mapping Angle: **-00° 30' 45"** Combination Scale Factor: **0.999996772**

Monument Type: Existing Berntsen Top Security Rod Monument with a 2-1/2" dia. domed cap and a permanent magnet encased in a 5" dia. PVC pipe with a NGS style aluminum access cover.



This document was prepared by Dan Corbin, Inc. on April 30, 2015 for Hancock County, Iowa.