

Hancock County, Iowa

Horizontal Datum: **NAD 83(2011)** - Vertical Datum: **NAVD 1988**
Iowa State Plane North Zone (1401)
Iowa Regional Coordinate System, Zone 2. Mason City (LCC)
US Survey Feet
2015

Point Name: **54**

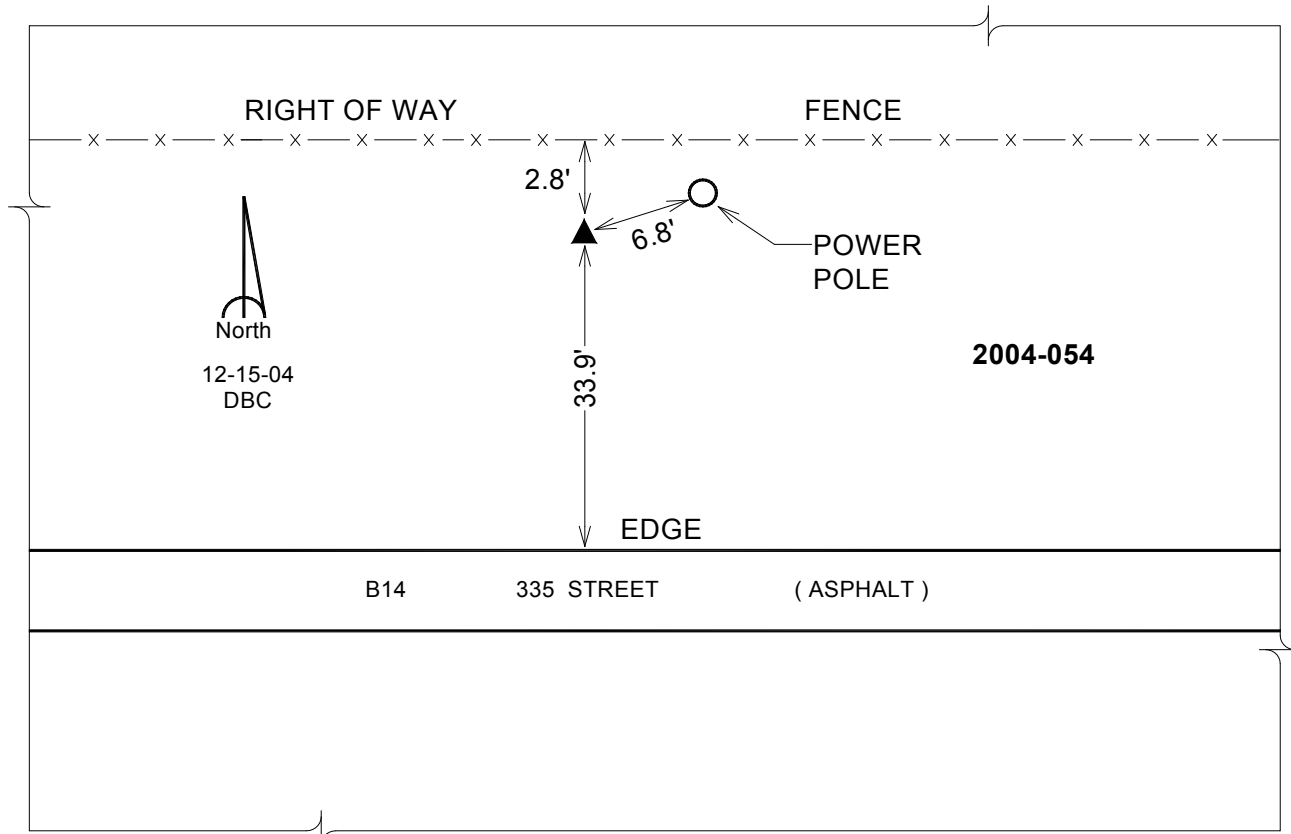
Designation: 2004-054 HANCOCK CO GPS CONTROL PT (Set by DCI in 2004)

NAD 83(NA2011) Latitude: **N43°14'57.10724"** Longitude: **W93°40'54.03233"**
NAVD 88 Ortho Height: **1282.510sft** Ellip. Ht: **1185.606sft** Geoid12A

Iowa North Zone (1401) Northing: **3918354.993sft** Easting: **4872844.772sft**
Mapping Angle: **-0°07'23"** Combination Scale Factor: **0.999940289**

laRCS Zone 2 Northing: **9831463.365sft** Easting: **12251759.771sft**
Mapping Angle: **-00° 38' 15"** Combination Scale Factor: **0.999987264**

Monument Type: Berntsen Top Security Rod Monument with a 2-1/2" dia. domed cap and a permanent magnet encased in a 5" dia. PVC pipe with a NGS style aluminum access cover.



This document was prepared by Dan Corbin, Inc. on April 30, 2015 for Hancock County, Iowa.