

Hancock County, Iowa

Horizontal Datum: **NAD 83(2011)** - Vertical Datum: **NAVD 1988**
Iowa State Plane North Zone (1401)
Iowa Regional Coordinate System, Zone 2. Mason City (LCC)
US Survey Feet
2015

Point Name: **55**

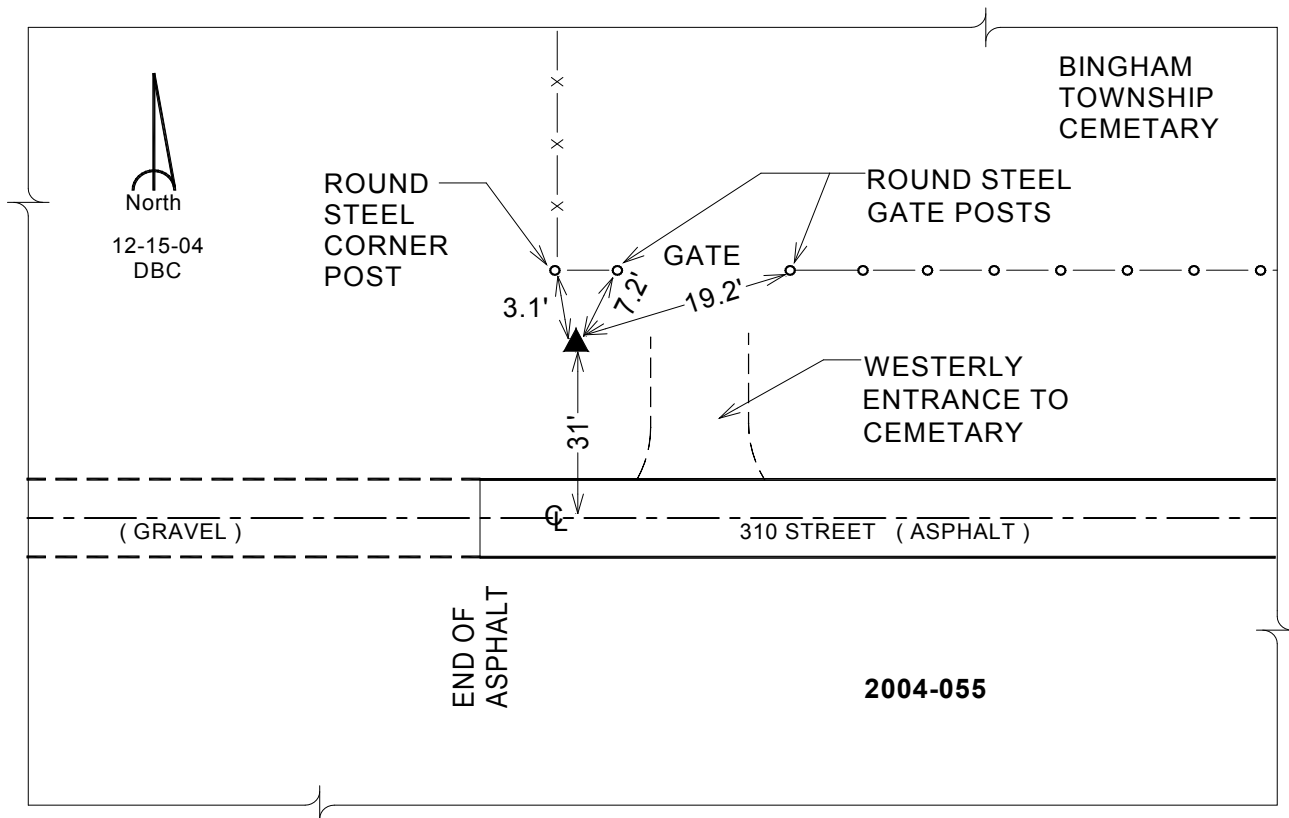
Designation: 2004-055 HANCOCK CO GPS CONTROL PT (Set by DCI in 2004)

NAD 83(NA2011) Latitude: **N43°12'46.04473"** Longitude: **W93°54'49.10804"**
NAVD 88 Ortho Height: **1243.521sft** Ellip. Ht: **1147.487sft** **Geoid12A**

Iowa North Zone (1401) Northing: **3905303.076sft** Easting: **4810975.870sft**
Mapping Angle: **-0°16'49"** Combination Scale Factor: **0.999935854**

laRCS Zone 2 Northing: **9818967.439sft** Easting: **12189772.960sft**
Mapping Angle: **-00° 47' 46"** Combination Scale Factor: **0.999988377**

Monument Type: Berntsen Top Security Rod Monument with a 2-1/2" dia. domed cap and a permanent magnet encased in a 5" dia. PVC pipe with a NGS style aluminum access cover.



This document was prepared by Dan Corbin, Inc. on April 30, 2015 for Hancock County, Iowa.