

**Hancock County, Iowa**

Horizontal Datum: **NAD 83(2011)** - Vertical Datum: **NAVD 1988**  
Iowa State Plane North Zone (1401)  
Iowa Regional Coordinate System, Zone 2. Mason City (LCC)  
US Survey Feet  
**2015**

Point Name: **58**

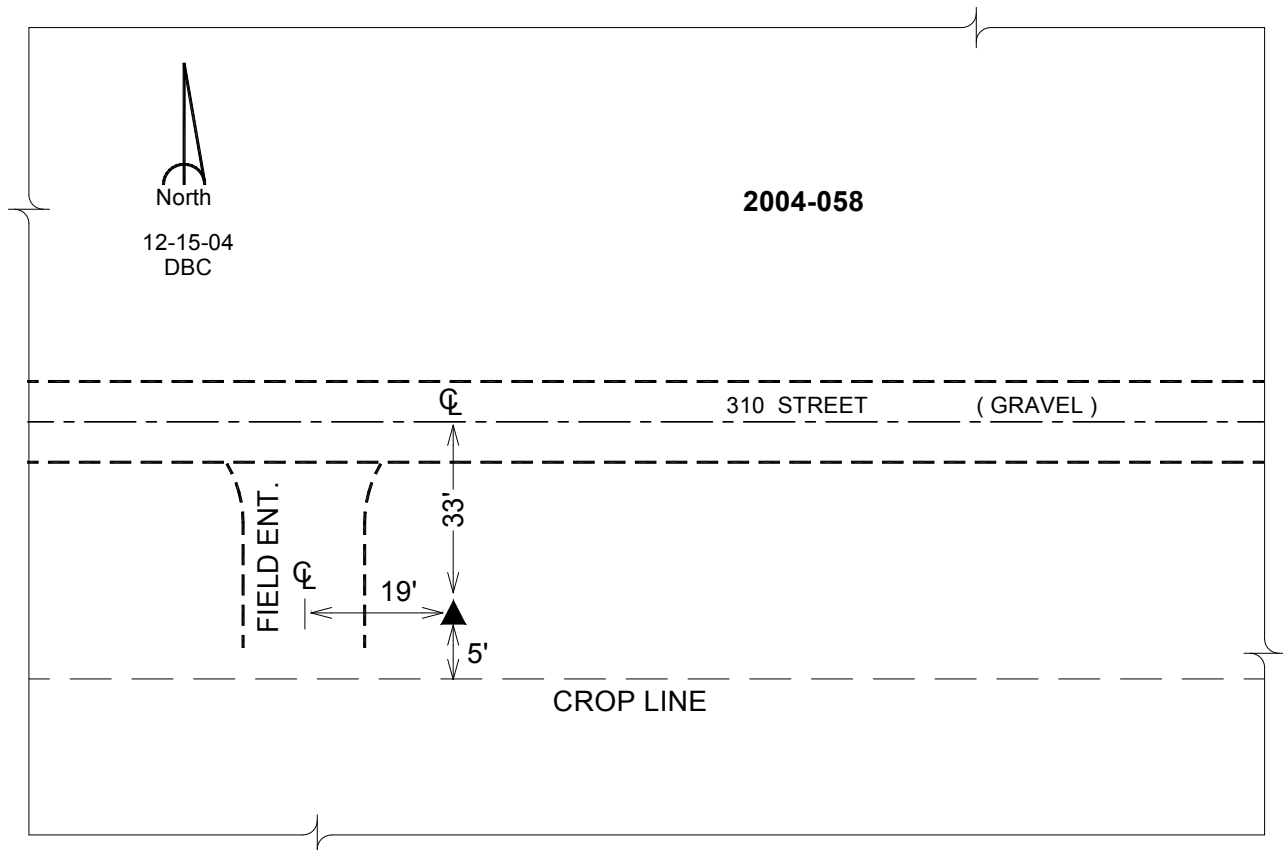
**Designation:** 2004-058 HANCOCK CO GPS CONTROL PT (Set by DCI in 2004)

NAD 83(NA2011) Latitude: **N43°12'47.20117"** Longitude: **W93°36'41.62814"**  
NAVD 88 Ortho Height: **1232.560sft** Ellip. Ht: **1135.790sft** **Geoid12A**

**Iowa North Zone (1401)** Northing: **3905170.004sft** Easting: **4891507.949sft**  
Mapping Angle: **-0°04'32"** Combination Scale Factor: **0.999936465**

**IaRCS Zone 2** Northing: **9818110.807sft** Easting: **12270304.836sft**  
Mapping Angle: **-00° 35' 22"** Combination Scale Factor: **0.999988942**

**Monument Type:** Berntsen Top Security Rod Monument with a 2-1/2" dia. domed cap and a permanent magnet encased in a 5" dia. PVC pipe with a NGS style aluminum access cover.



*This document was prepared by Dan Corbin, Inc. on April 30, 2015 for Hancock County, Iowa.*