

Hancock County, Iowa

Horizontal Datum: **NAD 83(2011)** - Vertical Datum: **NAVD 1988**
Iowa State Plane North Zone (1401)
Iowa Regional Coordinate System, Zone 2. Mason City (LCC)
US Survey Feet
2015

Point Name: **59**

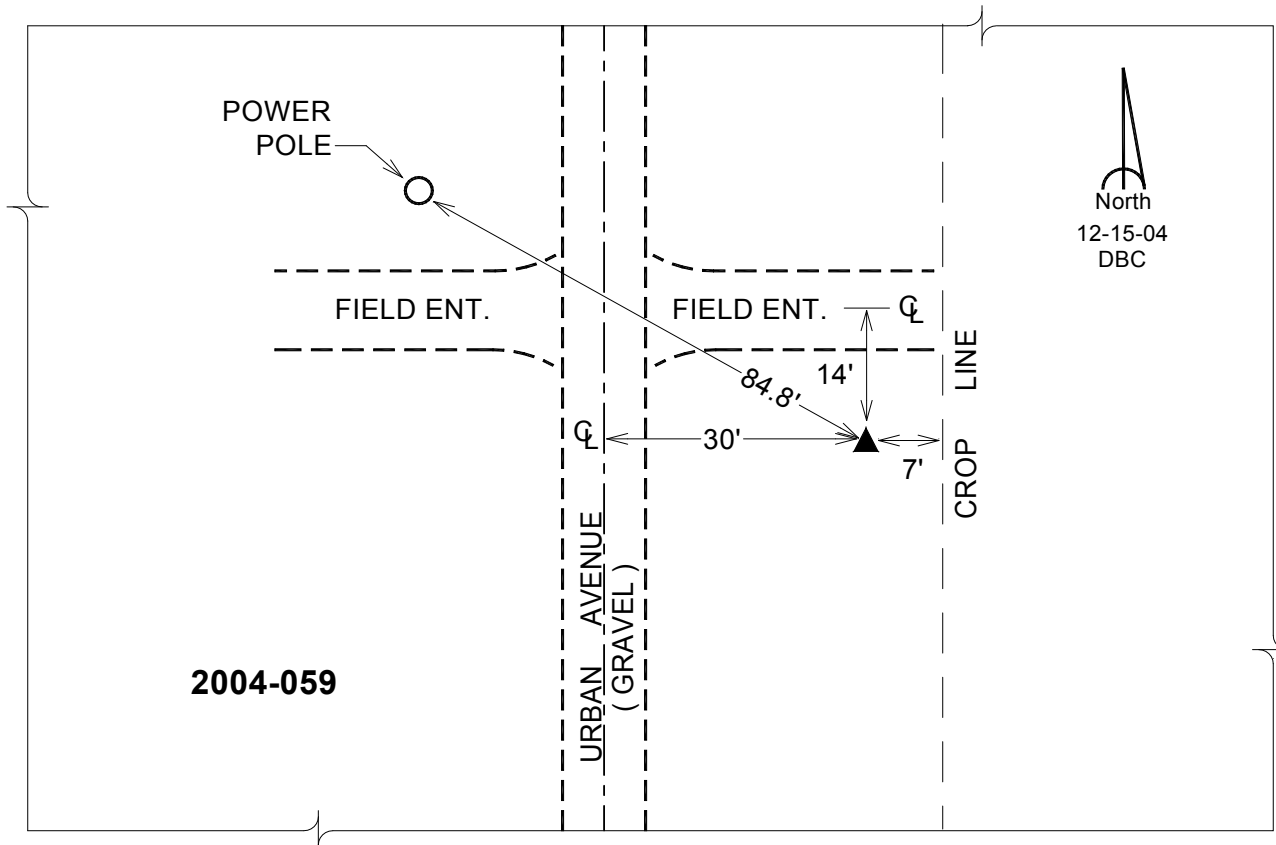
Designation: 2004-059 HANCOCK CO GPS CONTROL PT (Set by DCI in 2004)

NAD 83(NA2011) Latitude: **N43°12'41.64821"** Longitude: **W93°33'42.04190"**
NAVD 88 Ortho Height: **1251.950sft** Ellip. Ht: **1155.485sft** **Geoid12A**

Iowa North Zone (1401) Northing: **3904594.161sft** Easting: **4904806.562sft**
Mapping Angle: **-0°02'30"** Combination Scale Factor: **0.99993527**

IaRCS Zone 2 Northing: **9817415.732sft** Easting: **12283598.454sft**
Mapping Angle: **-00° 33' 19"** Combination Scale Factor: **0.999987977**

Monument Type: Berntsen Top Security Rod Monument with a 2-1/2" dia. domed cap and a permanent magnet encased in a 5" dia. PVC pipe with a NGS style aluminum access cover.



This document was prepared by Dan Corbin, Inc. on April 30, 2015 for Hancock County, Iowa.