

Hancock County, Iowa

Horizontal Datum: **NAD 83(2011)** - Vertical Datum: **NAVD 1988**
Iowa State Plane North Zone (1401)
Iowa Regional Coordinate System, Zone 2. Mason City (LCC)
US Survey Feet
2015

Point Name: **61**

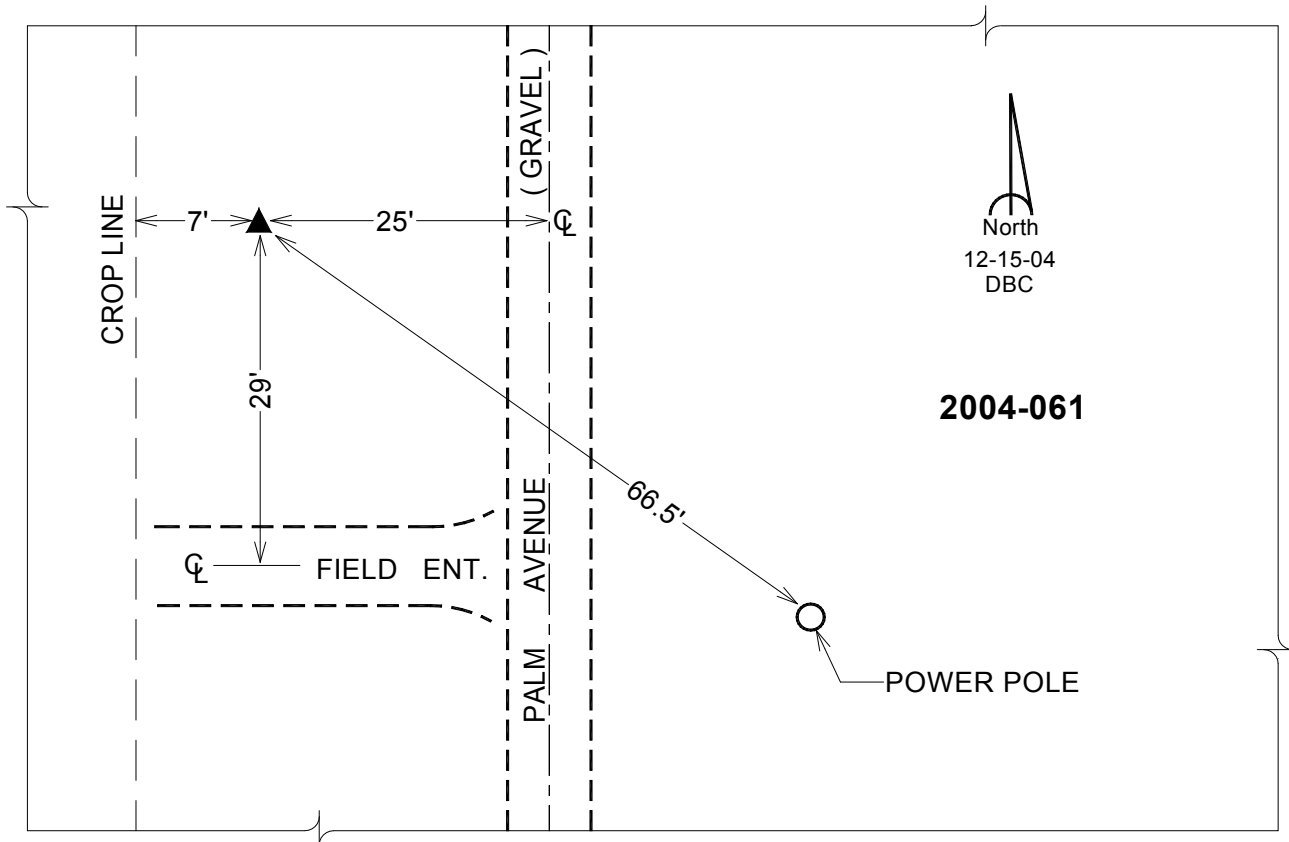
Designation: 2004-061 HANCOCK CO GPS CONTROL PT (Set by DCI in 2004)

NAD 83(NA2011) Latitude: **N43°10'05.20915"** Longitude: **W93°40'32.41289"**
NAVD 88 Ortho Height: **1240.750sft** Ellip. Ht: **1143.953sft** Geoid12A

Iowa North Zone (1401) Northing: **3888798.092sft** Easting: **4874383.422sft**
Mapping Angle: **-0°07'09"** Combination Scale Factor: **0.999928903**

laRCS Zone 2 Northing: **9801892.268sft** Easting: **12253033.157sft**
Mapping Angle: **-00° 38' 00"** Combination Scale Factor: **0.999988223**

Monument Type: Berntsen Top Security Rod Monument with a 2-1/2" dia. domed cap and a permanent magnet encased in a 5" dia. PVC pipe with a NGS style aluminum access cover.



This document was prepared by Dan Corbin, Inc. on April 30, 2015 for Hancock County, Iowa.