

Hancock County, Iowa

Horizontal Datum: **NAD 83(2011)** - Vertical Datum: **NAVD 1988**
Iowa State Plane North Zone (1401)
Iowa Regional Coordinate System, Zone 2. Mason City (LCC)
US Survey Feet
2015

Point Name: **62**

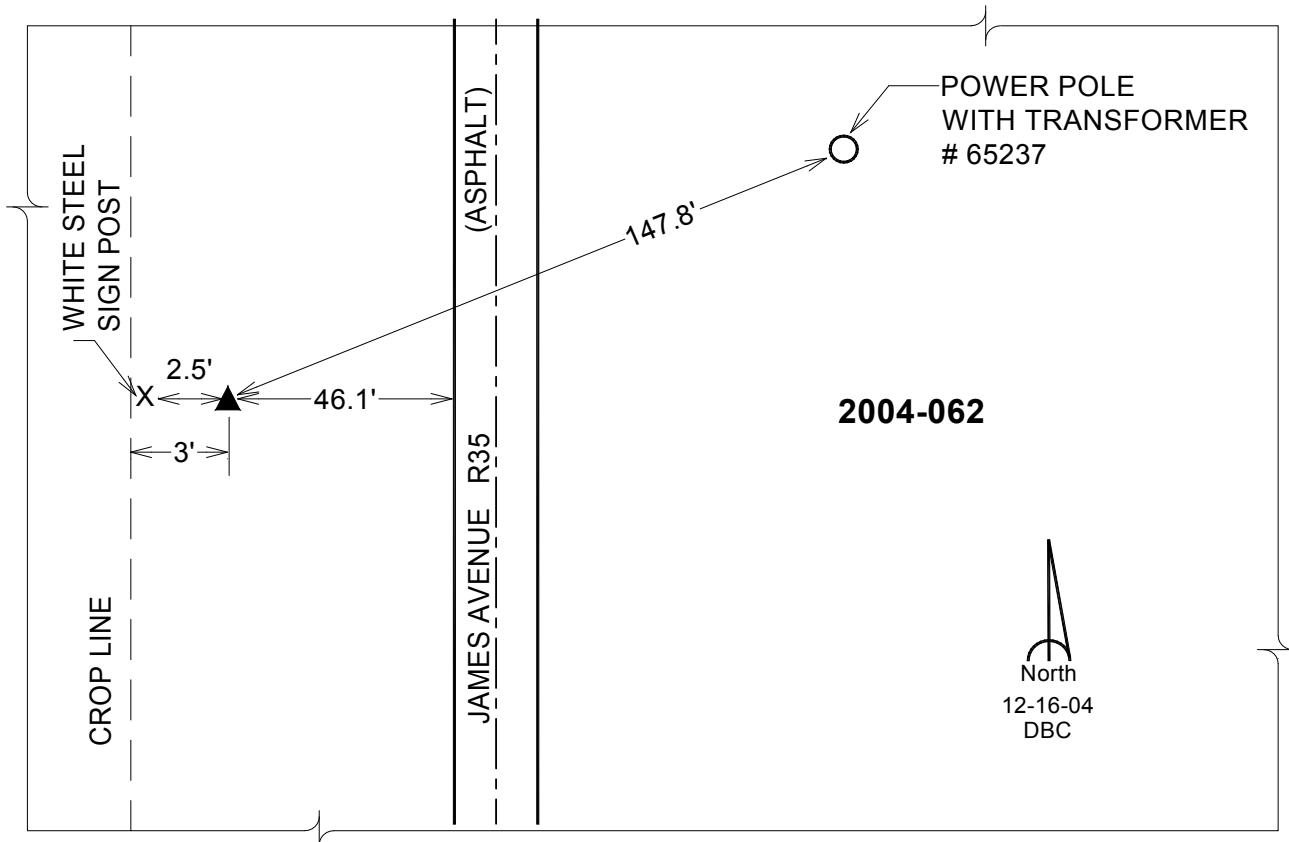
Designation: 2004-062 HANCOCK CO GPS CONTROL PT (Set by DCI in 2004)

NAD 83(NA2011) Latitude: **N43°10'20.50060"** Longitude: **W93°47'35.51065"**
NAVD 88 Ortho Height: **1221.560sft** Ellip. Ht: **1124.750sft** Geoid12A

Iowa North Zone (1401) Northing: **3890433.215sft** Easting: **4843034.149sft**
Mapping Angle: **-0°11'55"** Combination Scale Factor: **0.99993047**

laRCS Zone 2 Northing: **9803808.989sft** Easting: **12221697.978sft**
Mapping Angle: **-00° 42' 49"** Combination Scale Factor: **0.999989147**

Monument Type: Berntsen Top Security Rod Monument with a 2-1/2" dia. domed cap and a permanent magnet encased in a 5" dia. PVC pipe with a NGS style aluminum access cover.



This document was prepared by Dan Corbin, Inc. on April 30, 2015 for Hancock County, Iowa.