

Hancock County, Iowa

Horizontal Datum: **NAD 83(2011)** - Vertical Datum: **NAVD 1988**
Iowa State Plane North Zone (1401)
Iowa Regional Coordinate System, Zone 2. Mason City (LCC)
US Survey Feet
2015

Point Name: **64**

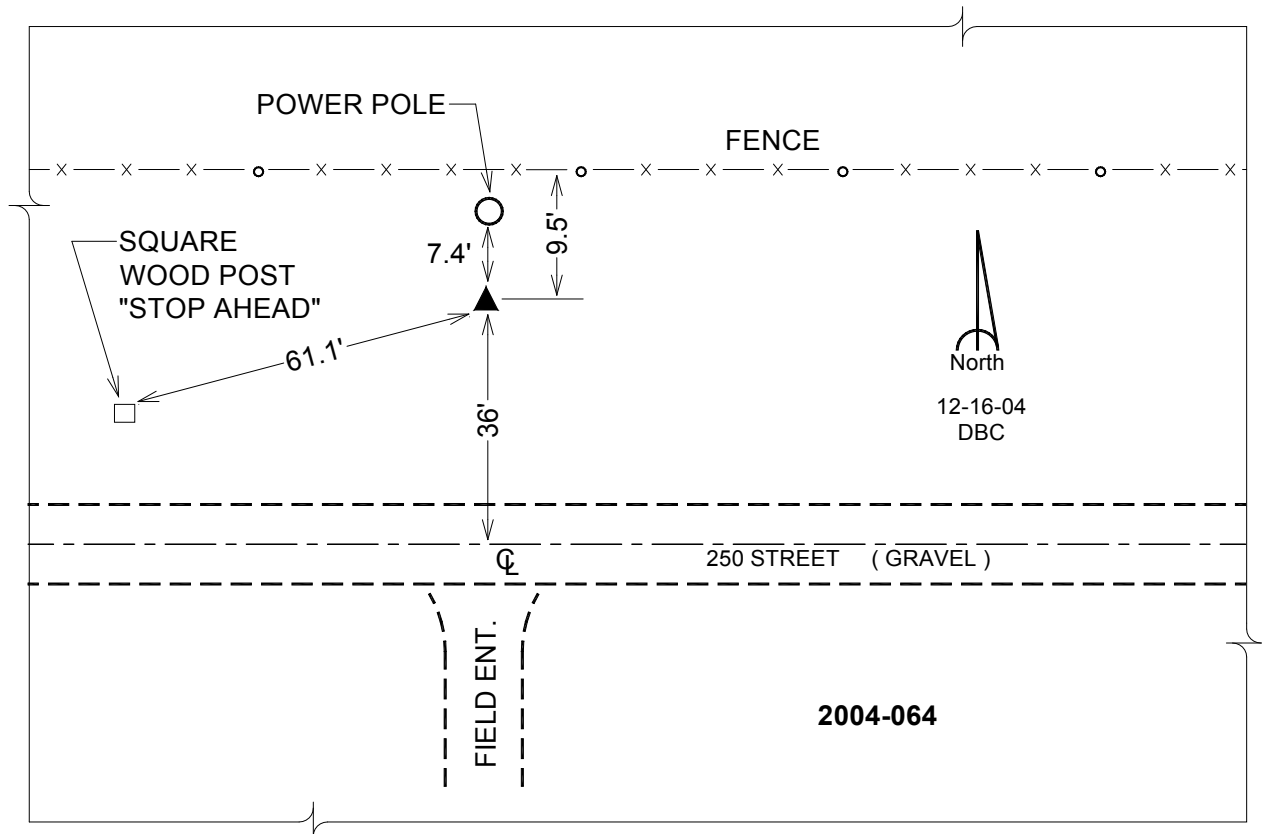
Designation: 2004-064 HANCOCK CO GPS CONTROL PT (Set by DCI in 2004)

NAD 83(NA2011) Latitude: **N43°07'34.87880"** Longitude: **W93°54'29.65633"**
NAVD 88 Ortho Height: **1261.930sft** Ellip. Ht: **1165.543sft** Geoid12A

Iowa North Zone (1401) Northing: **3873792.473sft** Easting: **4812264.200sft**
Mapping Angle: **-0°16'36"** Combination Scale Factor: **0.999921771**

IaRCS Zone 2 Northing: **9787444.648sft** Easting: **12190777.678sft**
Mapping Angle: **-00° 47' 33"** Combination Scale Factor: **0.999987435**

Monument Type: Berntsen Top Security Rod Monument with a 2-1/2" dia. domed cap and a permanent magnet encased in a 5" dia. PVC pipe with a NGS style aluminum access cover.



This document was prepared by Dan Corbin, Inc. on April 30, 2015 for Hancock County, Iowa.