

Hancock County, Iowa

Horizontal Datum: **NAD 83(2011)** - Vertical Datum: **NAVD 1988**
Iowa State Plane North Zone (1401)
Iowa Regional Coordinate System, Zone 2. Mason City (LCC)
US Survey Feet
2015

Point Name: **67**

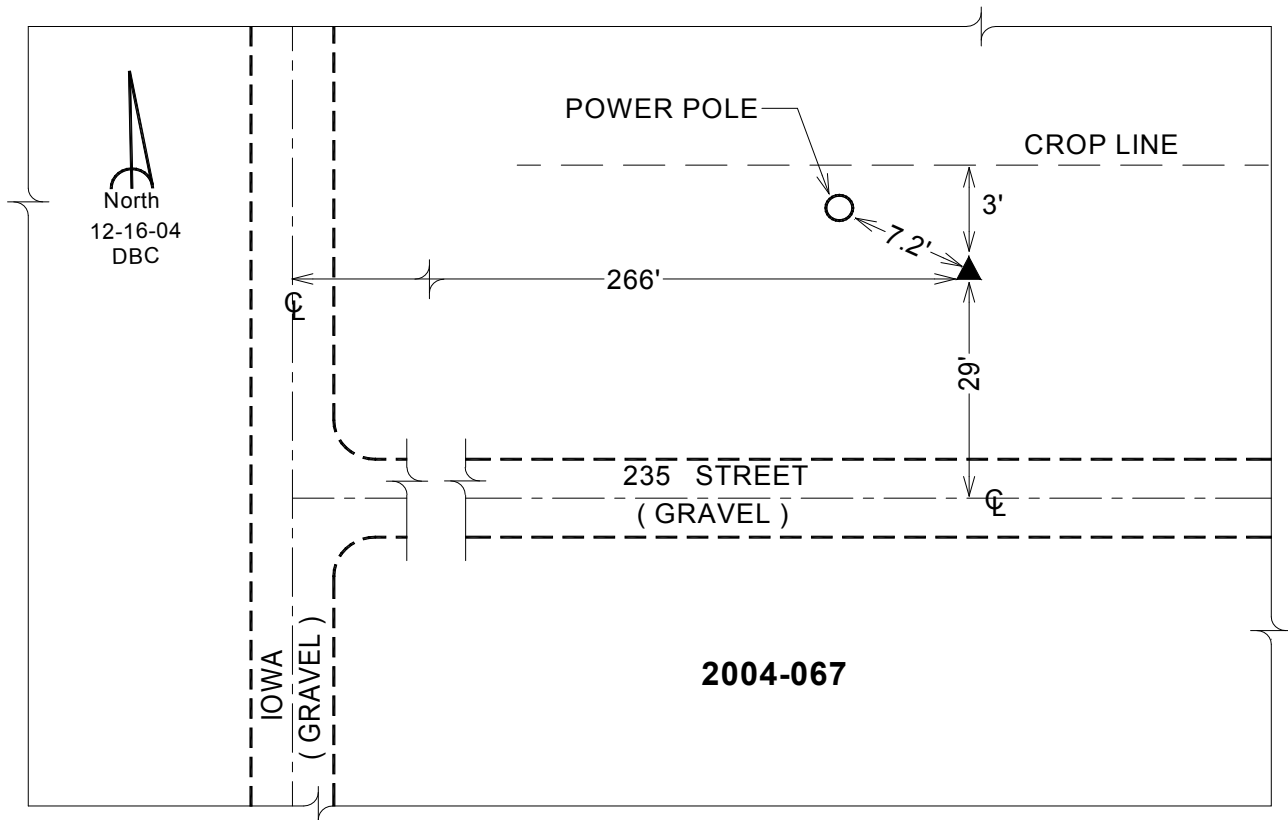
Designation: 2004-067 HANCOCK CO GPS CONTROL PT (Set by DCI in 2004)

NAD 83(NA2011) Latitude: **N43°06'18.43550"** Longitude: **W93°48'42.55230"**
NAVD 88 Ortho Height: **1219.350sft** Ellip. Ht: **1122.577sft** Geoid12A

Iowa North Zone (1401) Northing: **3865943.544sft** Easting: **4837975.829sft**
Mapping Angle: **-0°12'41"** Combination Scale Factor: **0.999920922**

IaRCS Zone 2 Northing: **9779364.211sft** Easting: **12216419.395sft**
Mapping Angle: **-00° 43' 35"** Combination Scale Factor: **0.999989821**

Monument Type: Berntsen Top Security Rod Monument with a 2-1/2" dia. domed cap and a permanent magnet encased in a 5" dia. PVC pipe with a NGS style aluminum access cover.



This document was prepared by Dan Corbin, Inc. on April 30, 2015 for Hancock County, Iowa.