

Hancock County, Iowa

Horizontal Datum: **NAD 83(2011)** - Vertical Datum: **NAVD 1988**
Iowa State Plane North Zone (1401)
Iowa Regional Coordinate System, Zone 2. Mason City (LCC)
US Survey Feet
2015

Point Name: **71**

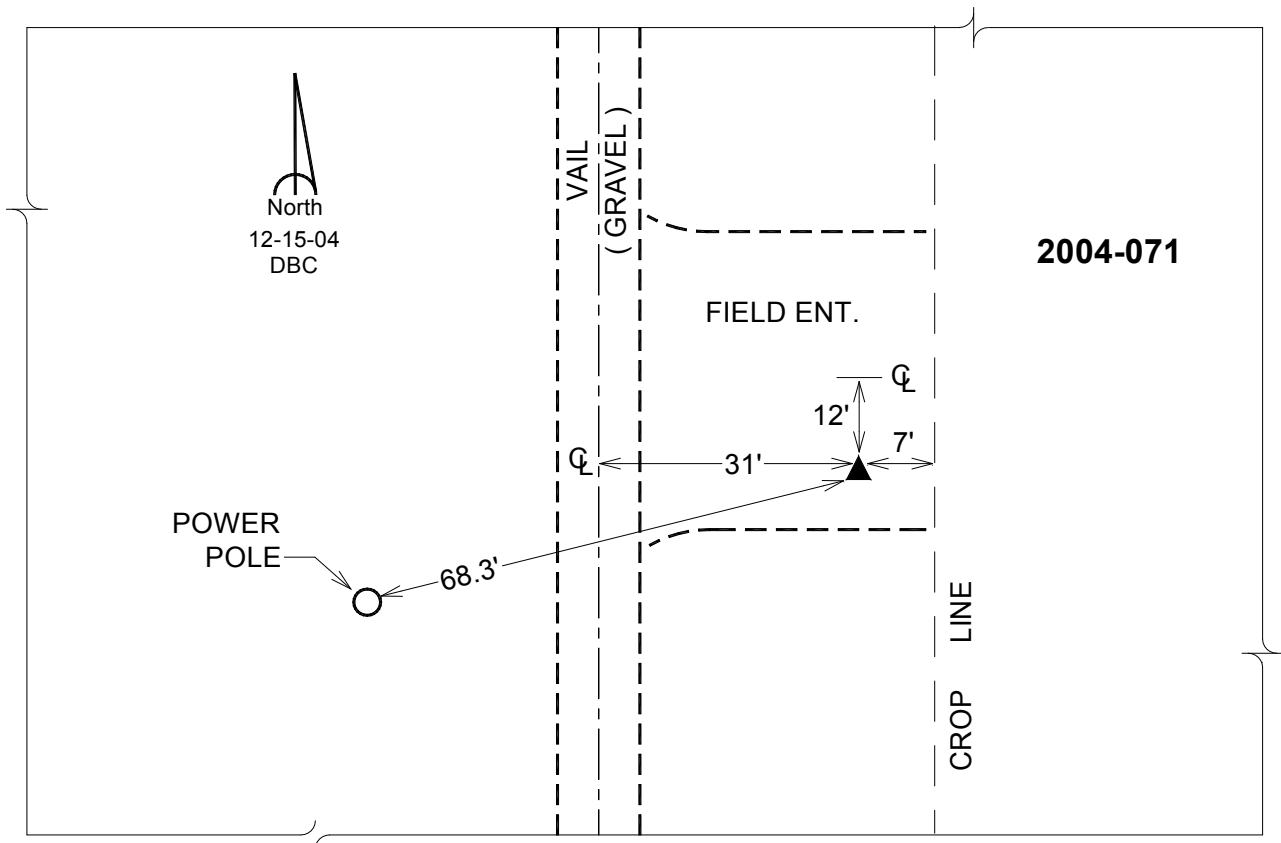
Designation: 2004-071 HANCOCK CO GPS CONTROL PT (Set by DCI in 2004)

NAD 83(NA2011) Latitude: **N43°07'55.78360"** Longitude: **W93°33'25.03866"**
NAVD 88 Ortho Height: **1222.170sft** Ellip. Ht: **1126.472sft** Geoid12A

Iowa North Zone (1401) Northing: **3875650.925sft** Easting: **4906046.247sft**
Mapping Angle: **-0°02'19"** Combination Scale Factor: **0.999924451**

laRCS Zone 2 Northing: **9788460.842sft** Easting: **12284578.768sft**
Mapping Angle: **-00° 33' 07"** Combination Scale Factor: **0.999989240**

Monument Type: Berntsen Top Security Rod Monument with a 2-1/2" dia. domed cap and a permanent magnet encased in a 5" dia. PVC pipe with a NGS style aluminum access cover.



This document was prepared by Dan Corbin, Inc. on April 30, 2015 for Hancock County, Iowa.