

Hancock County, Iowa

Horizontal Datum: **NAD 83(2011)** - Vertical Datum: **NAVD 1988**
Iowa State Plane North Zone (1401)
Iowa Regional Coordinate System, Zone 2. Mason City (LCC)
US Survey Feet
2015

Point Name: **72**

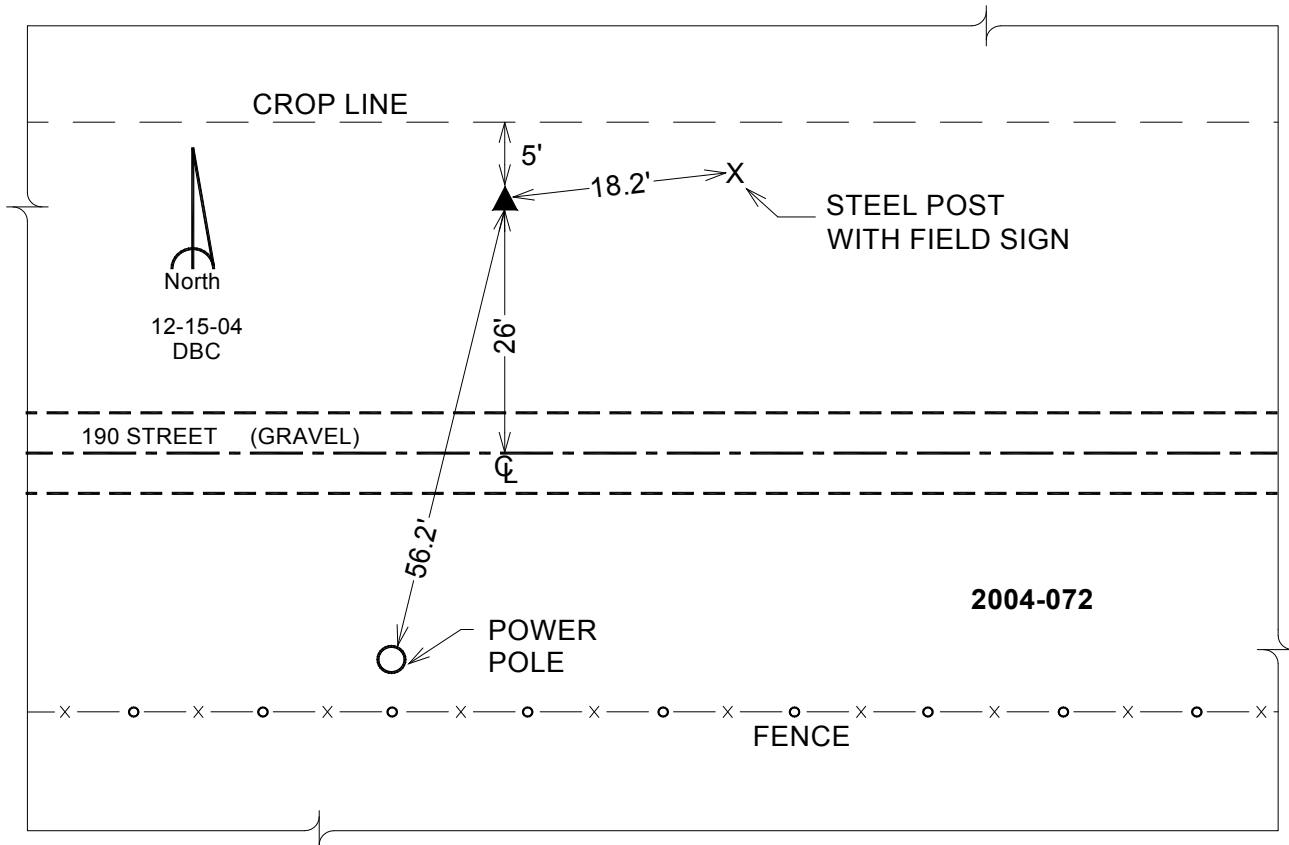
Designation: 2004-072 HANCOCK CO GPS CONTROL PT (Set by DCI in 2004)

NAD 83(NA2011) Latitude: **N43°04'03.49533"** Longitude: **W93°33'17.31269"**
NAVD 88 Ortho Height: **1224.110sft** Ellip. Ht: **1129.261sft** **Geoid12A**

Iowa North Zone (1401) Northing: **3852133.067sft** Easting: **4906603.886sft**
Mapping Angle: **-0°02'14"** Combination Scale Factor: **0.999915823**

laRCS Zone 2 Northing: **9764937.288sft** Easting: **12284925.660sft**
Mapping Angle: **-00° 33' 02"** Combination Scale Factor: **0.999990413**

Monument Type: Berntsen Top Security Rod Monument with a 2-1/2" dia. domed cap and a permanent magnet encased in a 5" dia. PVC pipe with a NGS style aluminum access cover.



This document was prepared by Dan Corbin, Inc. on April 30, 2015 for Hancock County, Iowa.