

Hancock County, Iowa

Horizontal Datum: **NAD 83(2011)** - Vertical Datum: **NAVD 1988**
Iowa State Plane North Zone (1401)
Iowa Regional Coordinate System, Zone 2. Mason City (LCC)
US Survey Feet
2015

Point Name: **75**

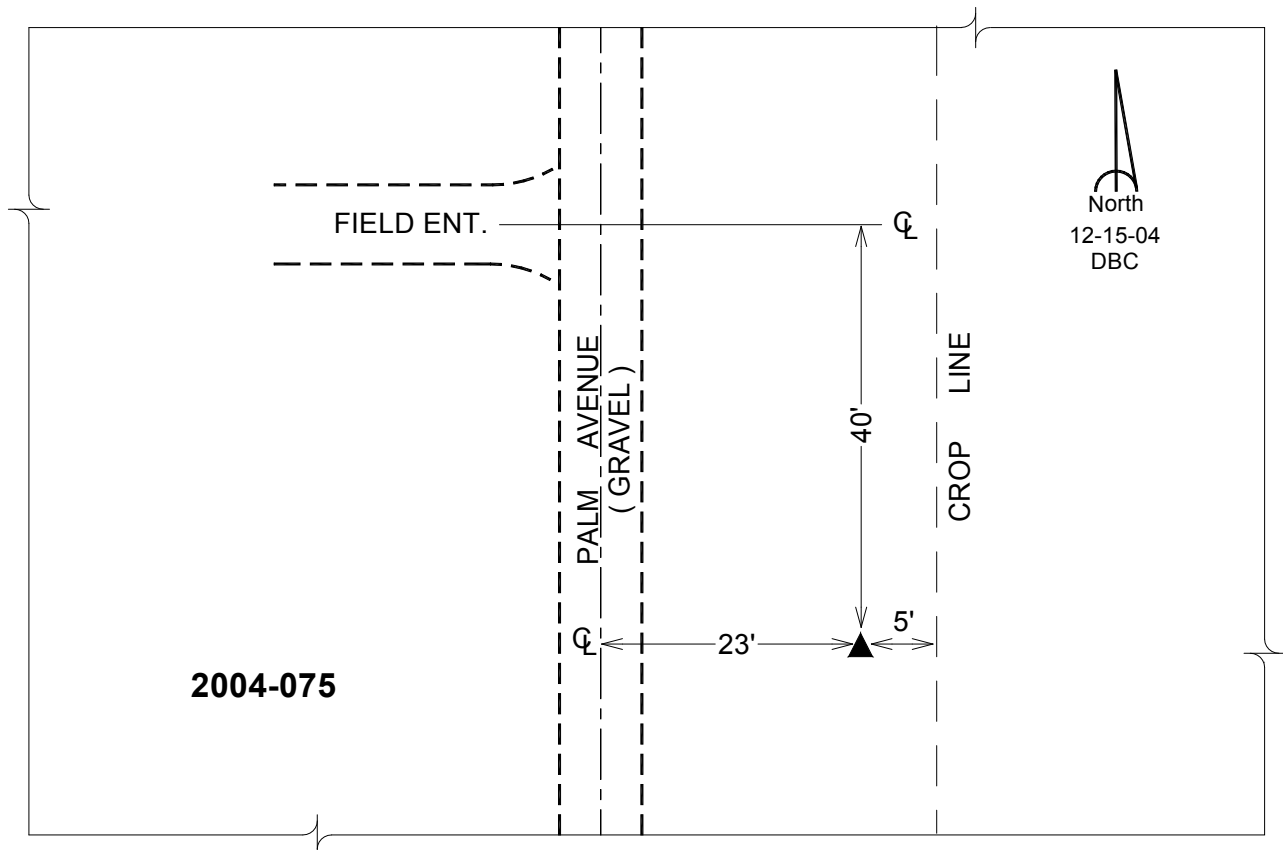
Designation: 2004-075 HANCOCK CO GPS CONTROL PT (Set by DCI in 2004)

NAD 83(NA2011) Latitude: **N43°05'05.52103"** Longitude: **W93°40'31.76728"**
NAVD 88 Ortho Height: **1237.520sft** Ellip. Ht: **1141.127sft** **Geoid12A**

Iowa North Zone (1401) Northing: **3858456.582sft** Easting: **4874368.283sft**
Mapping Angle: **-0°07'08"** Combination Scale Factor: **0.999917401**

laRCS Zone 2 Northing: **9771550.117sft** Easting: **12252745.697sft**
Mapping Angle: **-00° 37' 59"** Combination Scale Factor: **0.999989373**

Monument Type: Berntsen Top Security Rod Monument with a 2-1/2" dia. domed cap and a permanent magnet encased in a 5" dia. PVC pipe with a NGS style aluminum access cover.



This document was prepared by Dan Corbin, Inc. on April 30, 2015 for Hancock County, Iowa.