

Hancock County, Iowa

Horizontal Datum: **NAD 83(2011)** - Vertical Datum: **NAVD 1988**
Iowa State Plane North Zone (1401)
Iowa Regional Coordinate System, Zone 2. Mason City (LCC)
US Survey Feet
2015

Point Name: **77**

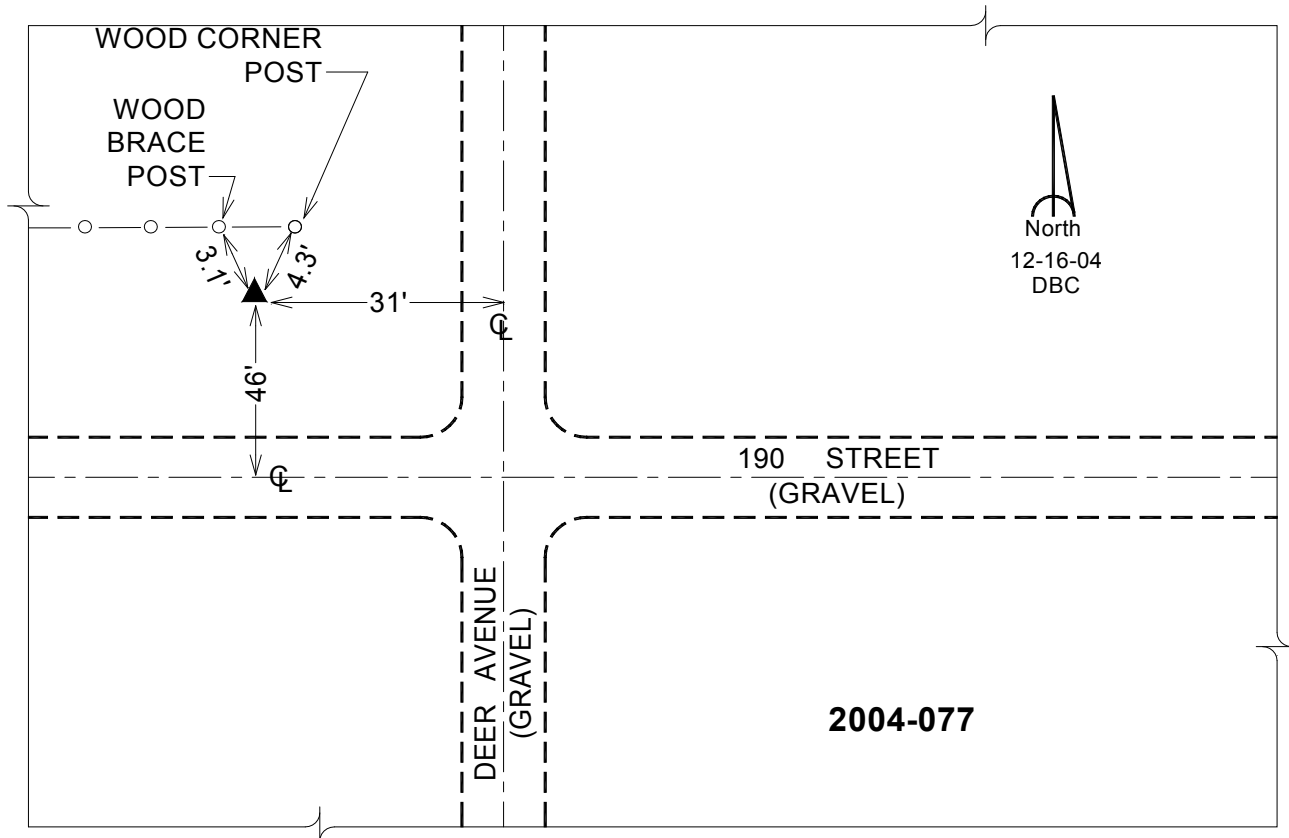
Designation: 2004-077 HANCOCK CO GPS CONTROL PT (Set by DCI in 2004)

NAD 83(NA2011) Latitude: **N43°02'18.07589"** Longitude: **W93°54'40.65481"**
NAVD 88 Ortho Height: **1182.049sft** Ellip. Ht: **1085.579sft** Geoid12A

Iowa North Zone (1401) Northing: **3841723.004sft** Easting: **4811292.546sft**
Mapping Angle: **-0°16'44"** Combination Scale Factor: **0.999914472**

IaRCS Zone 2 Northing: **9755382.897sft** Easting: **12189517.325sft**
Mapping Angle: **-00° 47' 40"** Combination Scale Factor: **0.999993514**

Monument Type: Berntsen Top Security Rod Monument with a 2-1/2" dia. domed cap and a permanent magnet encased in a 5" dia. PVC pipe with a NGS style aluminum access cover.



This document was prepared by Dan Corbin, Inc. on April 30, 2015 for Hancock County, Iowa.