

Hancock County, Iowa

Horizontal Datum: **NAD 83(2011)** - Vertical Datum: **NAVD 1988**
Iowa State Plane North Zone (1401)
Iowa Regional Coordinate System, Zone 2. Mason City (LCC)
US Survey Feet
2015

Point Name: **78**

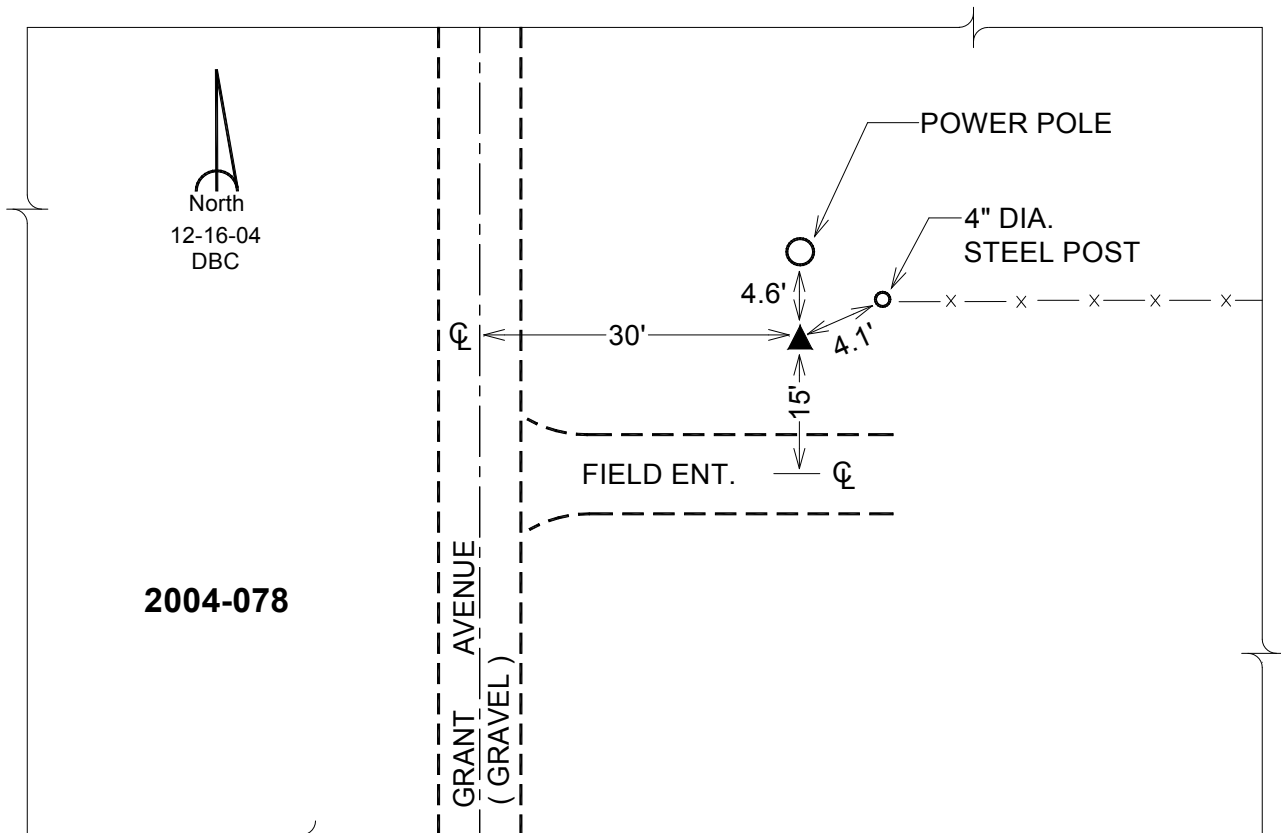
Designation: 2004-078 HANCOCK CO GPS CONTROL PT (Set by DCI in 2004)

NAD 83(NA2011) Latitude: **N43°02'44.25065"** Longitude: **W93°51'06.63054"**
NAVD 88 Ortho Height: **1200.310sft** Ellip. Ht: **1103.718sft** **Geoid12A**

Iowa North Zone (1401) Northing: **3844301.200sft** Easting: **4827197.499sft**
Mapping Angle: **-0°14'18"** Combination Scale Factor: **0.999914435**

laRCS Zone 2 Northing: **9757818.075sft** Easting: **12205446.086sft**
Mapping Angle: **-00° 45' 14"** Combination Scale Factor: **0.999992370**

Monument Type: Berntsen Top Security Rod Monument with a 2-1/2" dia. domed cap and a permanent magnet encased in a 5" dia. PVC pipe with a NGS style aluminum access cover.



This document was prepared by Dan Corbin, Inc. on April 30, 2015 for Hancock County, Iowa.