

**Hancock County, Iowa**

Horizontal Datum: **NAD 83(2011)** - Vertical Datum: **NAVD 1988**  
Iowa State Plane North Zone (1401)  
Iowa Regional Coordinate System, Zone 2. Mason City (LCC)  
US Survey Feet  
**2015**

Point Name: **79**

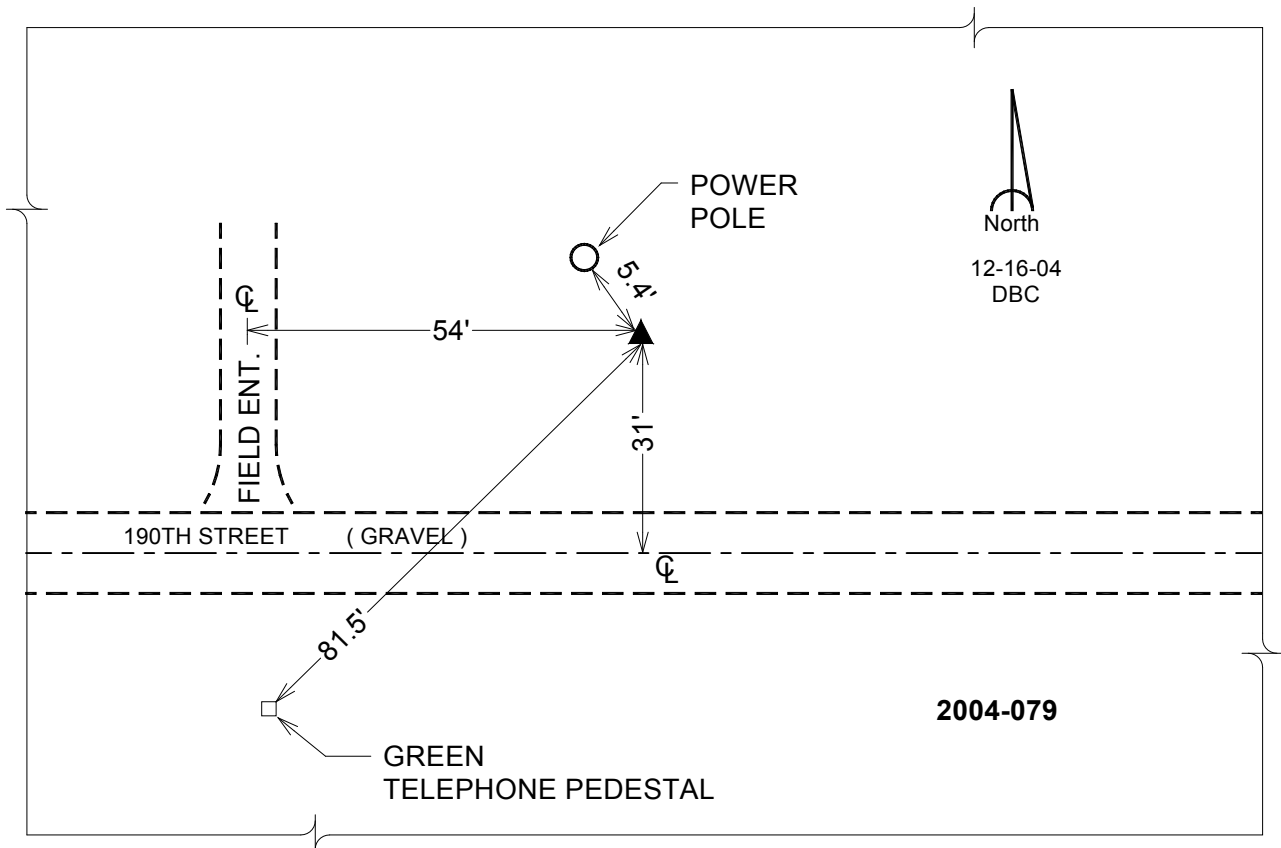
**Designation:** 2004-079 HANCOCK CO GPS CONTROL PT (Set by DCI in 2004)

NAD 83(NA2011) Latitude: **N43°02'18.73800"** Longitude: **W93°47'26.68836"**  
NAVD 88 Ortho Height: **1203.788sft** Ellip. Ht: **1107.244sft** Geoid12A

**Iowa North Zone (1401)** Northing: **3841656.222sft** Easting: **4843520.152sft**  
Mapping Angle: **-0°11'49"** Combination Scale Factor: **0.999913459**

**laRCS Zone 2** Northing: **9755026.231sft** Easting: **12221745.580sft**  
Mapping Angle: **-00° 42' 43"** Combination Scale Factor: **0.999992469**

**Monument Type:** Berntsen Top Security Rod Monument with a 2-1/2" dia. domed cap and a permanent magnet encased in a 5" dia. PVC pipe with a NGS style aluminum access cover.



*This document was prepared by Dan Corbin, Inc. on April 30, 2015 for Hancock County, Iowa.*