

Hancock County, Iowa

Horizontal Datum: **NAD 83(2011)** - Vertical Datum: **NAVD 1988**
Iowa State Plane North Zone (1401)
Iowa Regional Coordinate System, Zone 2. Mason City (LCC)
US Survey Feet
2015

Point Name: **81**

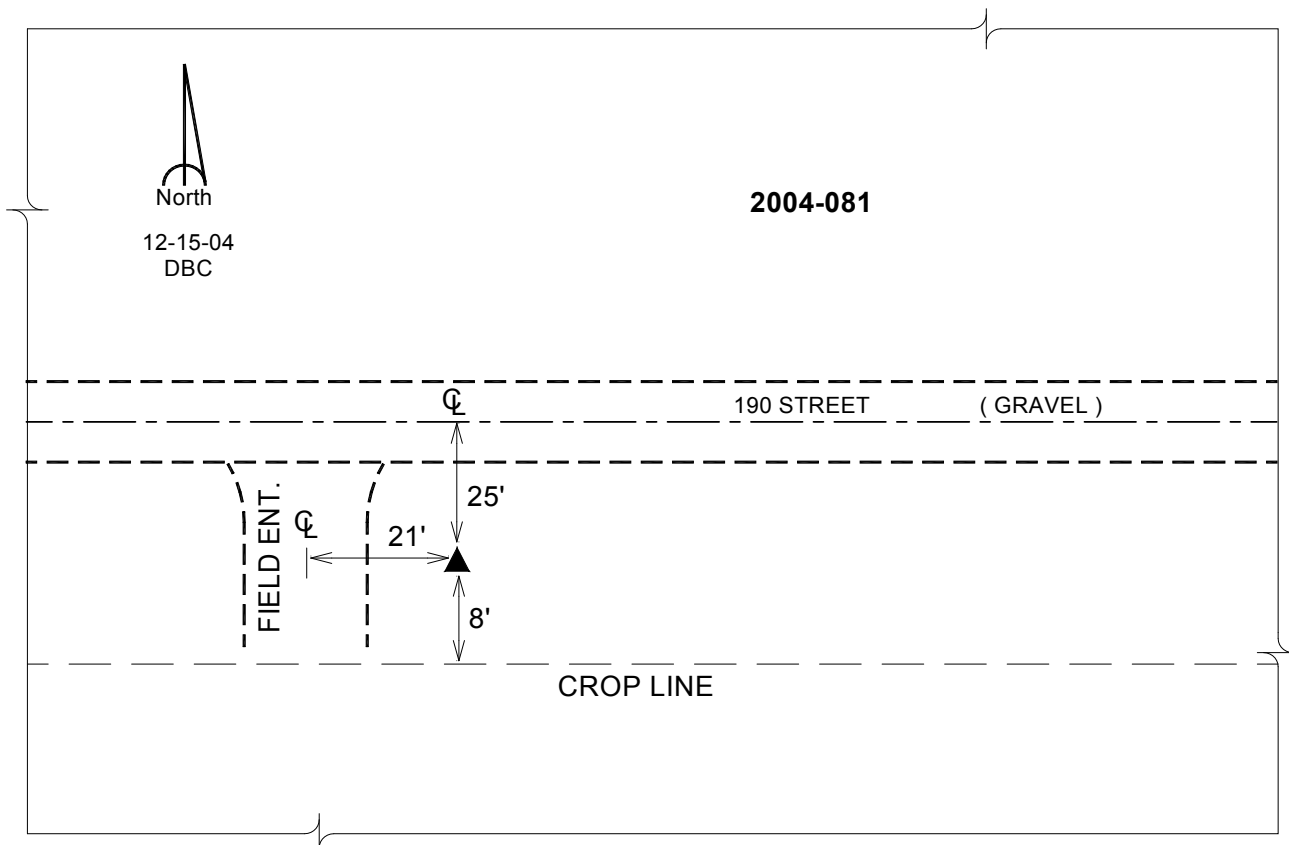
Designation: 2004-081 HANCOCK CO GPS CONTROL PT (Set by DCI in 2004)

NAD 83(NA2011) Latitude: **N43°02'18.92052"** Longitude: **W93°36'51.34996"**
NAVD 88 Ortho Height: **1220.990sft** Ellip. Ht: **1125.666sft** Geoid12A

Iowa North Zone (1401) Northing: **3841561.680sft** Easting: **4890702.037sft**
Mapping Angle: **-0°04'39"** Combination Scale Factor: **0.999912586**

IaRCS Zone 2 Northing: **9754508.074sft** Easting: **12268928.452sft**
Mapping Angle: **-00° 35' 29"** Combination Scale Factor: **0.999991585**

Monument Type: Berntsen Top Security Rod Monument with a 2-1/2" dia. domed cap and a permanent magnet encased in a 5" dia. PVC pipe with a NGS style aluminum access cover.



This document was prepared by Dan Corbin, Inc. on April 30, 2015 for Hancock County, Iowa.