

**Hancock County, Iowa**

Horizontal Datum: **NAD 83(2011)** - Vertical Datum: **NAVD 1988**  
Iowa State Plane North Zone (1401)  
Iowa Regional Coordinate System, Zone 2. Mason City (LCC)  
US Survey Feet  
**2015**

Point Name: **83**

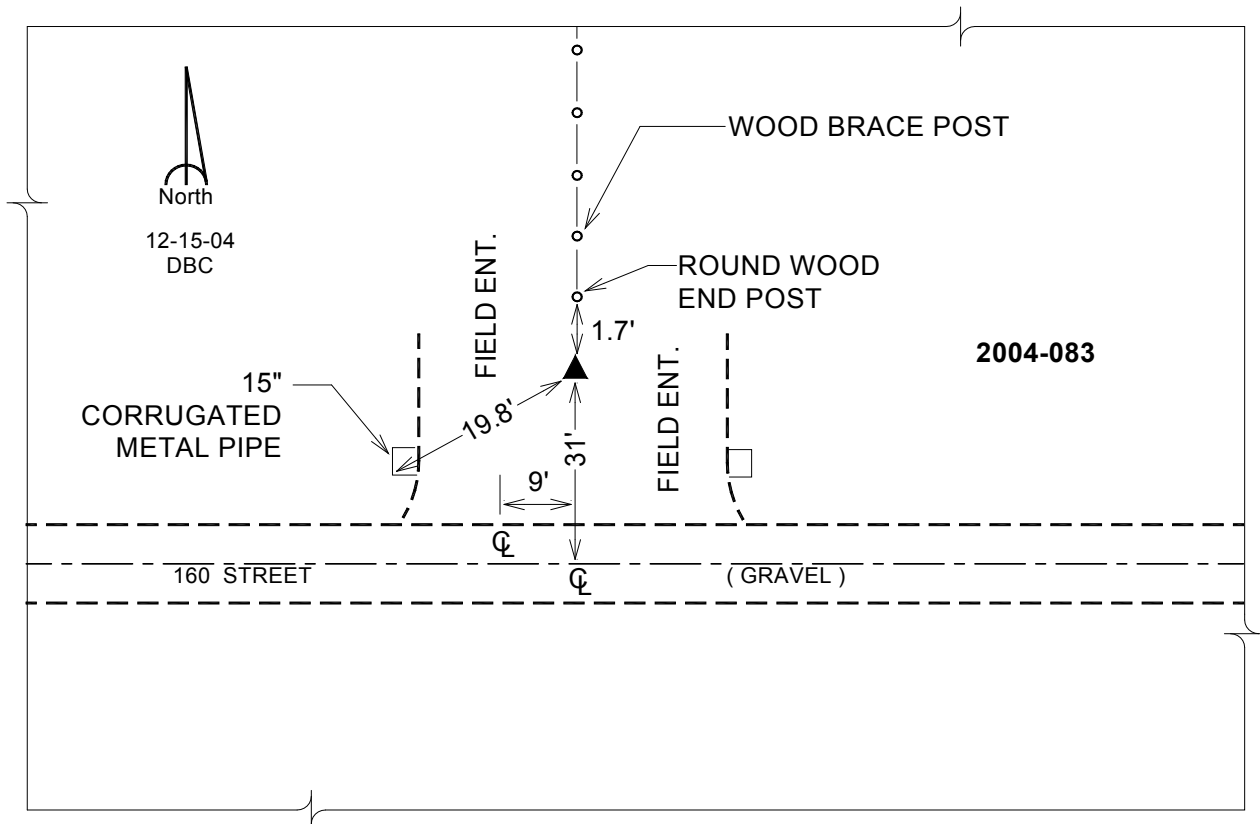
**Designation:** 2004-083 HANCOCK CO GPS CONTROL PT (Set by DCI in 2004)

NAD 83(NA2011) Latitude: **N42°59'43.10243"** Longitude: **W93°33'43.08452"**  
NAVD 88 Ortho Height: **1246.900sft** Ellip. Ht: **1153.104sft** **Geoid12A**

**Iowa North Zone (1401)** Northing: **3825772.059sft** Easting: **4904671.572sft**  
Mapping Angle: **-0°02'31"** Combination Scale Factor: **0.999906675**

**IaRCS Zone 2** Northing: **9738592.539sft** Easting: **12282757.015sft**  
Mapping Angle: **-00° 33' 20"** Combination Scale Factor: **0.999992235**

**Monument Type:** Berntsen Top Security Rod Monument with a 2-1/2" dia. domed cap and a permanent magnet encased in a 5" dia. PVC pipe with a NGS style aluminum access cover.



*This document was prepared by Dan Corbin, Inc. on April 30, 2015 for Hancock County, Iowa.*