

**Hancock County, Iowa**

Horizontal Datum: **NAD 83(2011)** - Vertical Datum: **NAVD 1988**  
Iowa State Plane North Zone (1401)  
Iowa Regional Coordinate System, Zone 2. Mason City (LCC)  
US Survey Feet  
**2015**

Point Name: **84**

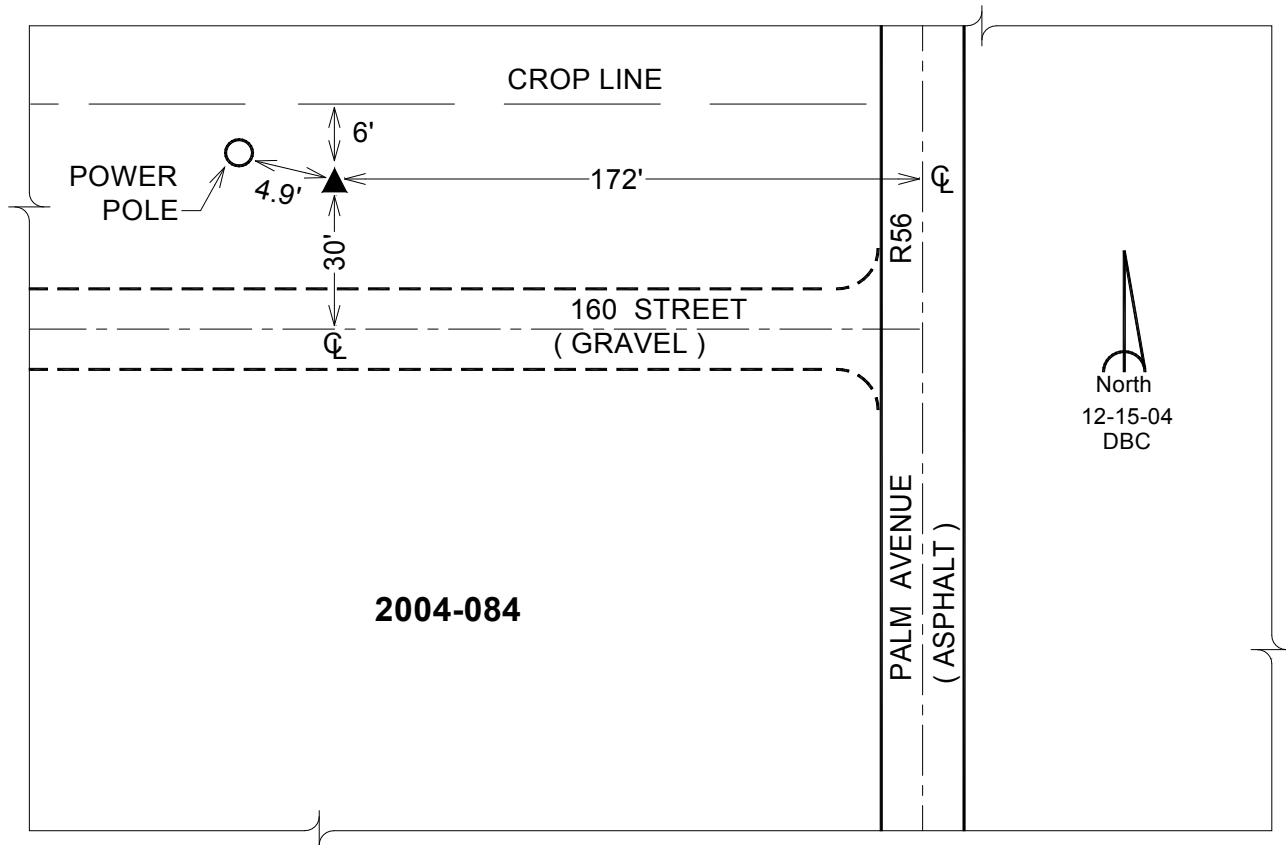
**Designation:** 2004-084 HANCOCK CO GPS CONTROL PT (Set by DCI in 2004)

NAD 83(NA2011) Latitude: **N42°59'42.65909"** Longitude: **W93°40'33.29354"**  
NAVD 88 Ortho Height: **1263.620sft** Ellip. Ht: **1168.188sft** Geoid12A

**Iowa North Zone (1401)** Northing: **3825770.065sft** Easting: **4874187.006sft**  
Mapping Angle: **-0°07'09"** Combination Scale Factor: **0.999905943**

**laRCS Zone 2** Northing: **9738863.963sft** Easting: **12252271.042sft**  
Mapping Angle: **-00° 38' 00"** Combination Scale Factor: **0.999991520**

**Monument Type:** Berntsen Top Security Rod Monument with a 2-1/2" dia. domed cap and a permanent magnet encased in a 5" dia. PVC pipe with a NGS style aluminum access cover.



*This document was prepared by Dan Corbin, Inc. on April 30, 2015 for Hancock County, Iowa.*