

Hancock County, Iowa

Horizontal Datum: **NAD 83(2011)** - Vertical Datum: **NAVD 1988**
Iowa State Plane North Zone (1401)
Iowa Regional Coordinate System, Zone 2. Mason City (LCC)
US Survey Feet
2015

Point Name: **85**

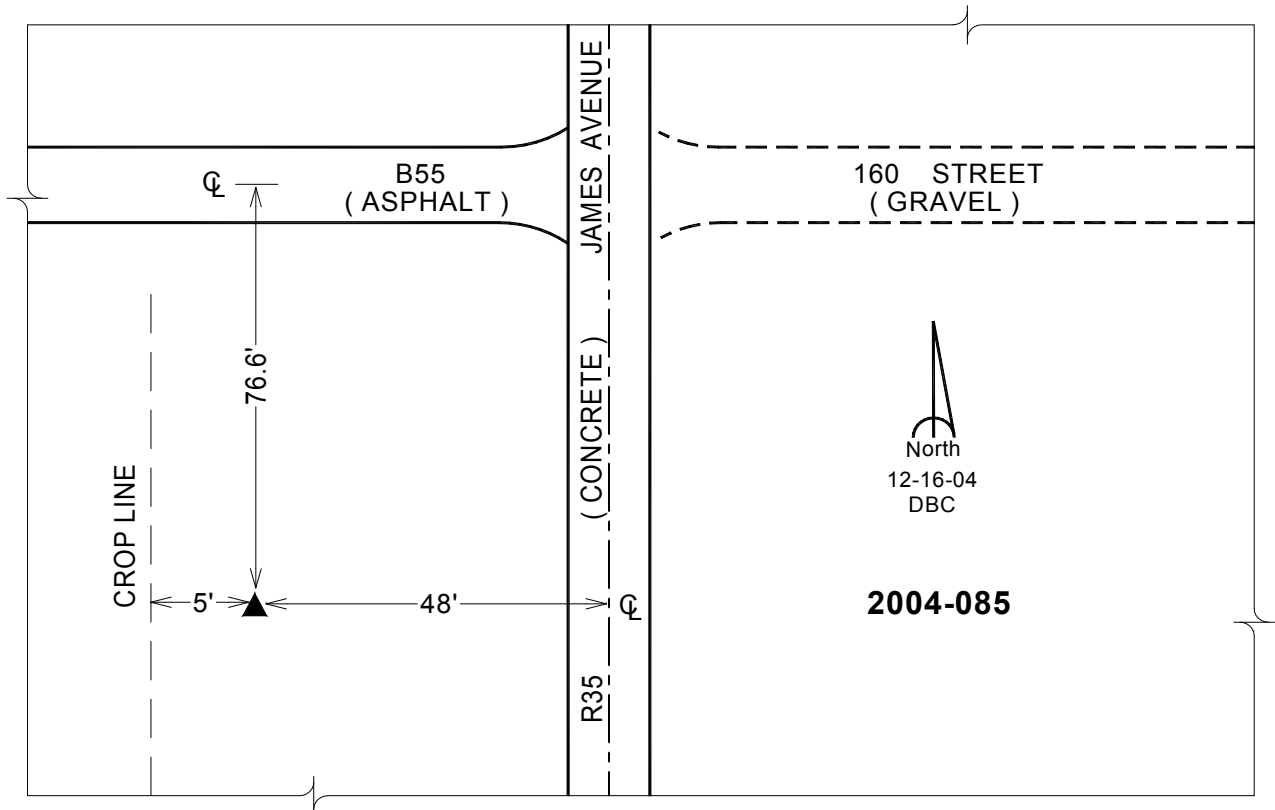
Designation: 2004-085 HANCOCK CO GPS CONTROL PT (Set by DCI in 2004)

NAD 83(NA2011) Latitude: **N42°59'41.40543"** Longitude: **W93°47'35.91968"**
NAVD 88 Ortho Height: **1190.330sft** Ellip. Ht: **1094.049sft** Geoid12A

Iowa North Zone (1401) Northing: **3825730.308sft** Easting: **4842779.348sft**
Mapping Angle: **-0°11'56"** Combination Scale Factor: **0.999909445**

IaRCS Zone 2 Northing: **9739106.304sft** Easting: **12220861.599sft**
Mapping Angle: **-00° 42' 50"** Combination Scale Factor: **0.999995088**

Monument Type: Berntsen Top Security Rod Monument with a 2-1/2" dia. domed cap and a permanent magnet encased in a 5" dia. PVC pipe with a NGS style aluminum access cover.



This document was prepared by Dan Corbin, Inc. on April 30, 2015 for Hancock County, Iowa.