

**Hancock County, Iowa**

Horizontal Datum: **NAD 83(2011)** - Vertical Datum: **NAVD 1988**  
Iowa State Plane North Zone (1401)  
Iowa Regional Coordinate System, Zone 2. Mason City (LCC)  
US Survey Feet  
**2015**

Point Name: **87**

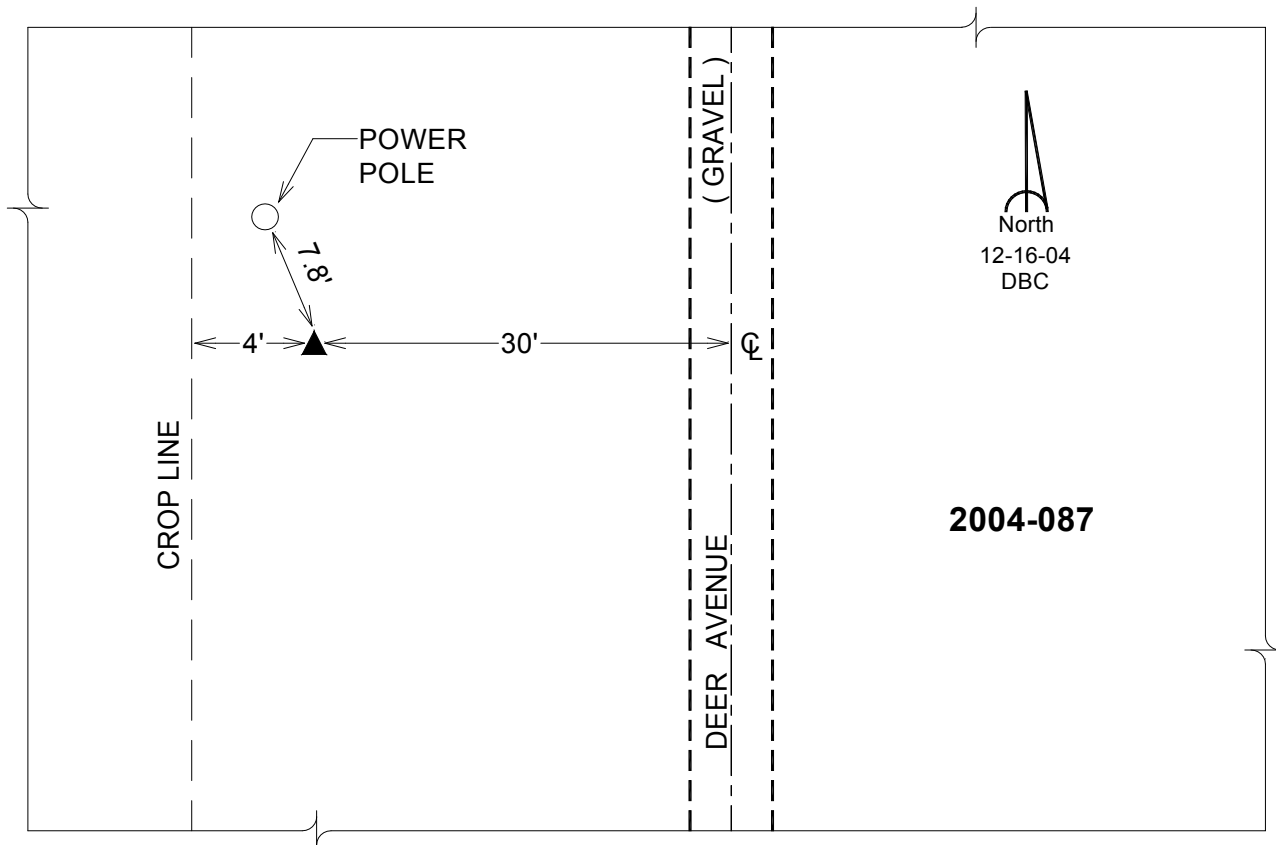
**Designation:** 2004-087 HANCOCK CO GPS CONTROL PT (Set by DCI in 2004)

NAD 83(NA2011) Latitude: **N42°57'18.09898"** Longitude: **W93°54'42.29880"**  
NAVD 88 Ortho Height: **1158.510sft** Ellip. Ht: **1062.227sft** Geoid12A

**Iowa North Zone (1401)** Northing: **3811354.408sft** Easting: **4811022.544sft**  
Mapping Angle: **-0°16'45"** Combination Scale Factor: **0.999907242**

**laRCS Zone 2** Northing: **9725015.364sft** Easting: **12188973.945sft**  
Mapping Angle: **-00° 47' 41"** Combination Scale Factor: **0.999998924**

**Monument Type:** Berntsen Top Security Rod Monument with a 2-1/2" dia. domed cap and a permanent magnet encased in a 5" dia. PVC pipe with a NGS style aluminum access cover.



*This document was prepared by Dan Corbin, Inc. on April 30, 2015 for Hancock County, Iowa.*