

**Hancock County, Iowa**

Horizontal Datum: **NAD 83(2011)** - Vertical Datum: **NAVD 1988**  
Iowa State Plane North Zone (1401)  
Iowa Regional Coordinate System, Zone 2. Mason City (LCC)  
US Survey Feet  
**2015**

Point Name: **90**

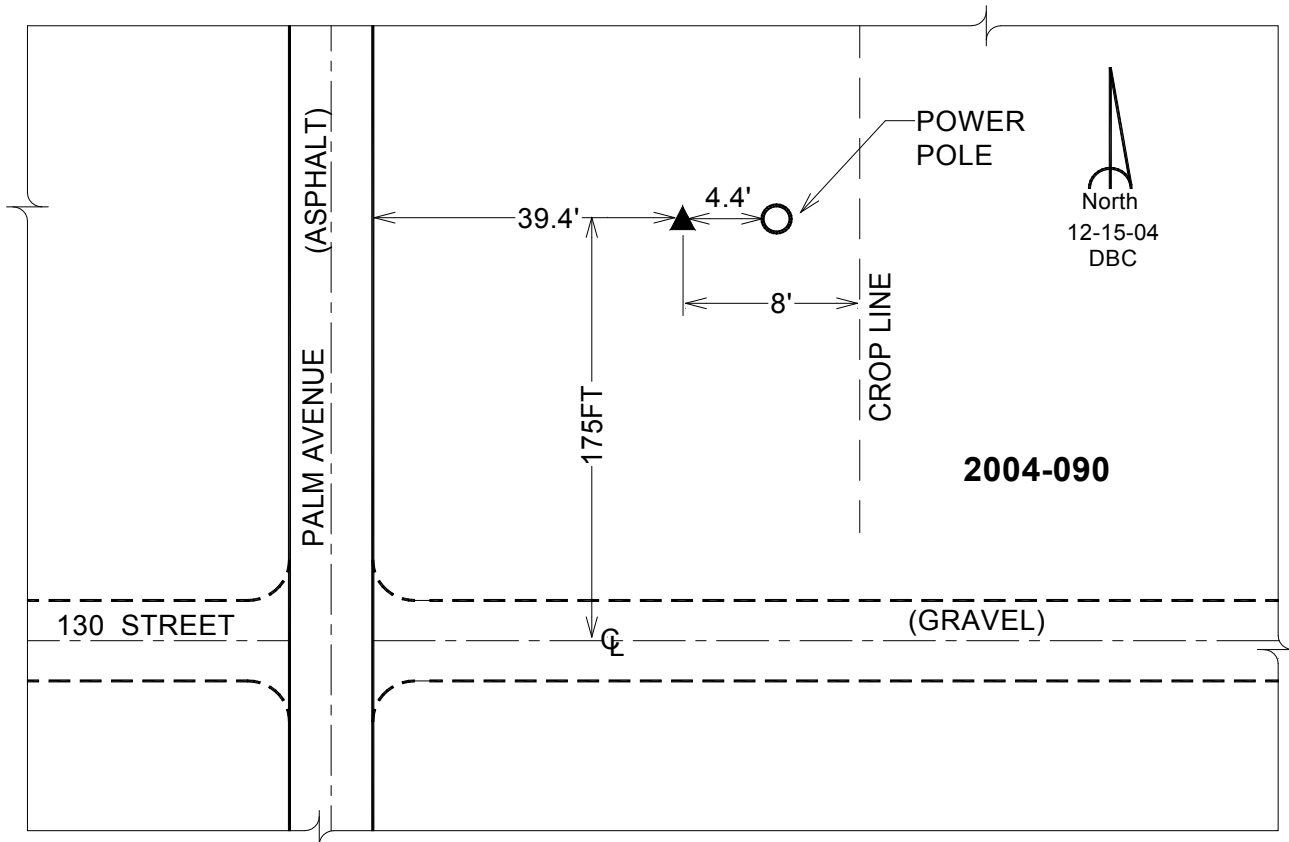
**Designation:** 2004-090 HANCOCK CO GPS CONTROL PT (Set by DCI in 2004)

NAD 83(NA2011) Latitude: **N42°57'09.06014"** Longitude: **W93°40'31.41973"**  
NAVD 88 Ortho Height: **1251.010sft** Ellip. Ht: **1156.293sft** Geoid**12A**

**Iowa North Zone (1401)** Northing: **3810219.606sft** Easting: **4874293.995sft**  
Mapping Angle: **-0°07'08"** Combination Scale Factor: **0.999902536**

**IaRCS Zone 2** Northing: **9723311.786sft** Easting: **12252238.465sft**  
Mapping Angle: **-00° 37' 59"** Combination Scale Factor: **0.999994582**

**Monument Type:** Berntsen Top Security Rod Monument with a 2-1/2" dia. domed cap and a permanent magnet encased in a 5" dia. PVC pipe with a NGS style aluminum access cover.



*This document was prepared by Dan Corbin, Inc. on April 30, 2015 for Hancock County, Iowa.*