

Hancock County, Iowa

Horizontal Datum: **NAD 83(2011)** - Vertical Datum: **NAVD 1988**
Iowa State Plane North Zone (1401)
Iowa Regional Coordinate System, Zone 2. Mason City (LCC)
US Survey Feet
2015

Point Name: **91**

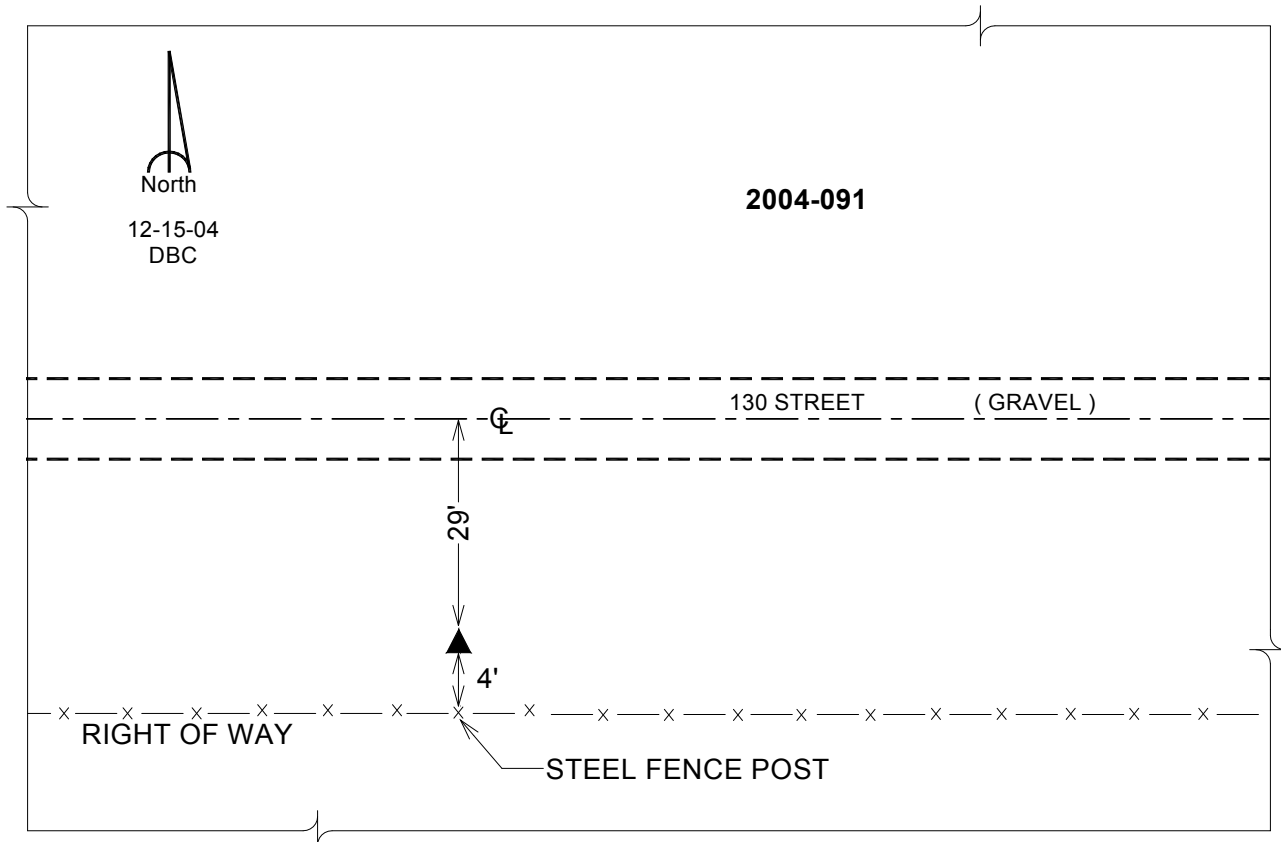
Designation: 2004-091 HANCOCK CO GPS CONTROL PT (Set by DCI in 2004)

NAD 83(NA2011) Latitude: **N42°57'06.82347"** Longitude: **W93°37'22.18050"**
NAVD 88 Ortho Height: **1260.070sft** Ellip. Ht: **1166.137sft** **Geoid12A**

Iowa North Zone (1401) Northing: **3809968.348sft** Easting: **4888366.572sft**
Mapping Angle: **-0°05'00"** Combination Scale Factor: **0.999902012**

IaRCS Zone 2 Northing: **9722934.248sft** Easting: **12266309.520sft**
Mapping Angle: **-00° 35' 50"** Combination Scale Factor: **0.999994151**

Monument Type: Berntsen Top Security Rod Monument with a 2-1/2" dia. domed cap and a permanent magnet encased in a 5" dia. PVC pipe with a NGS style aluminum access cover.



This document was prepared by Dan Corbin, Inc. on April 30, 2015 for Hancock County, Iowa.