

Hancock County, Iowa

Horizontal Datum: **NAD 83(2011)** - Vertical Datum: **NAVD 1988**
Iowa State Plane North Zone (1401)
Iowa Regional Coordinate System, Zone 2. Mason City (LCC)
US Survey Feet
2015

Point Name: **92**

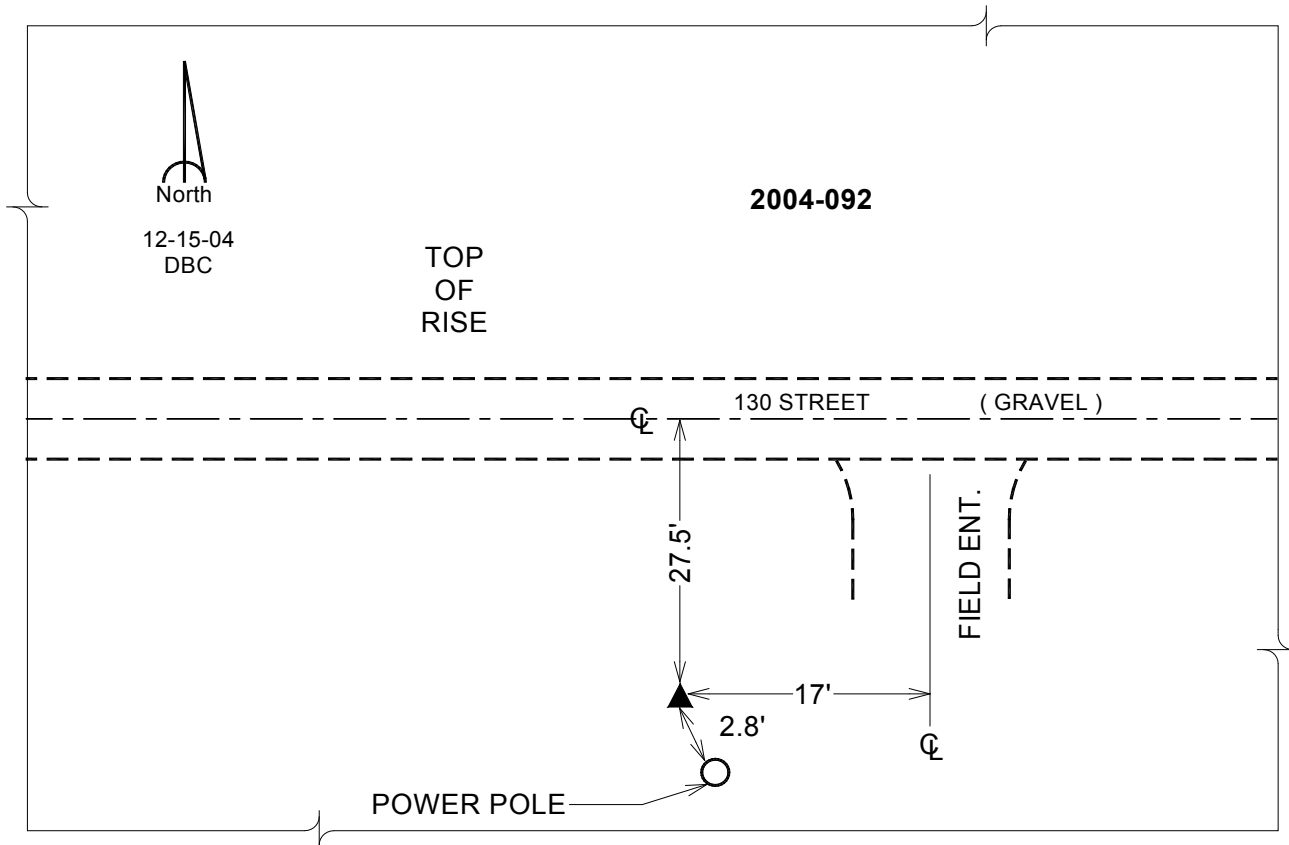
Designation: 2004-092 HANCOCK CO GPS CONTROL PT (Set by DCI in 2004)

NAD 83(NA2011) Latitude: **N42°57'07.16583"** Longitude: **W93°33'09.96436"**
NAVD 88 Ortho Height: **1258.260sft** Ellip. Ht: **1165.394sft** Geoid12A

Iowa North Zone (1401) Northing: **3809983.528sft** Easting: **4907123.028sft**
Mapping Angle: **-0°02'09"** Combination Scale Factor: **0.999902056**

laRCS Zone 2 Northing: **9722781.266sft** Easting: **12285067.090sft**
Mapping Angle: **-00° 32' 57"** Combination Scale Factor: **0.999994180**

Monument Type: Berntsen Top Security Rod Monument with a 2-1/2" dia. domed cap and a permanent magnet encased in a 5" dia. PVC pipe with a NGS style aluminum access cover.



This document was prepared by Dan Corbin, Inc. on April 30, 2015 for Hancock County, Iowa.