

Hancock County, Iowa

Horizontal Datum: **NAD 83(2011)** - Vertical Datum: **NAVD 1988**
Iowa State Plane North Zone (1401)
Iowa Regional Coordinate System, Zone 2. Mason City (LCC)
US Survey Feet
2015

Point Name: **1001**

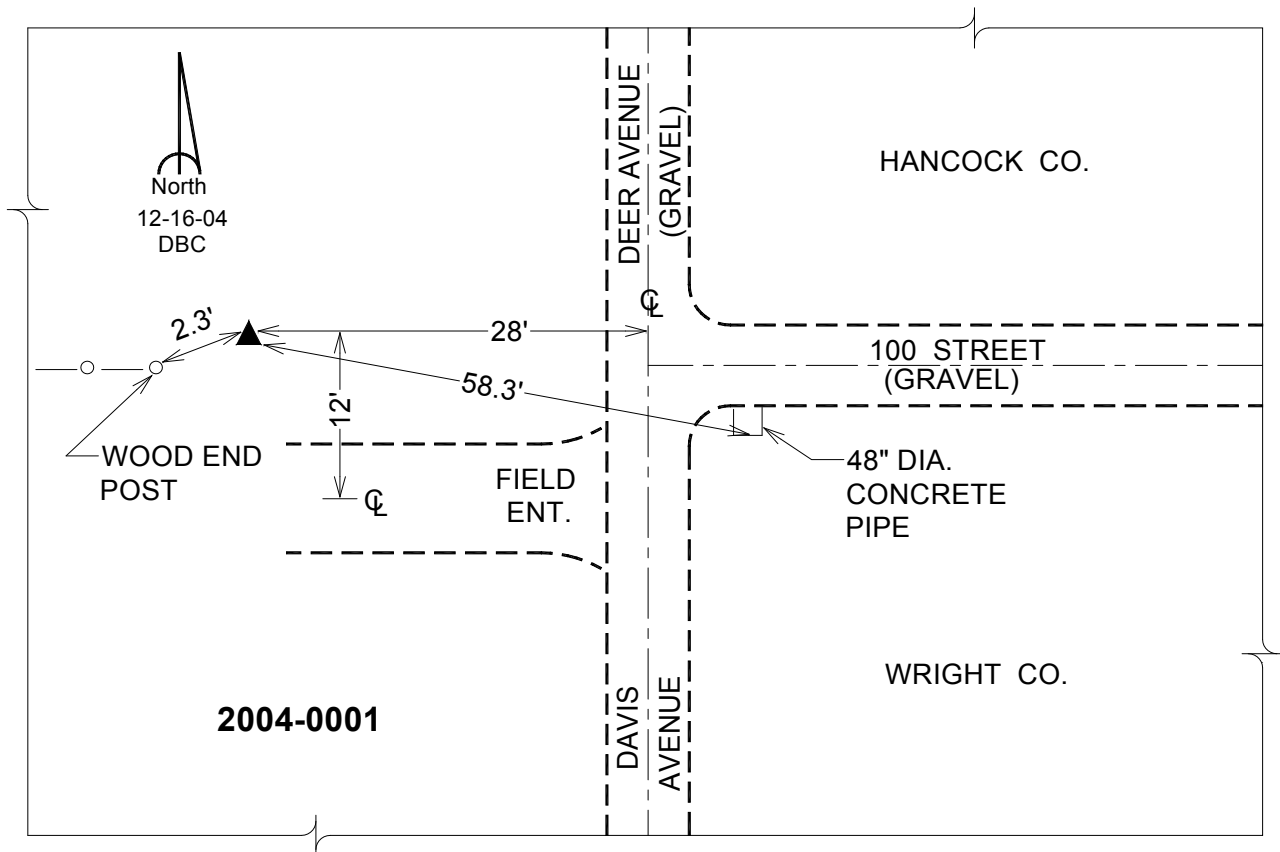
Designation: WRIGHT CO 0001 (Set by Veenstra & Kimm, Inc. in 2004)

NAD 83(NA2011) Latitude: **N42°54'29.42925"** Longitude: **W93°54'40.85755"**
NAVD 88 Ortho Height: **1139.680sft** Ellip. Ht: **1043.697sft** Geoid12A

Iowa North Zone (1401) Northing: **3794278.324sft** Easting: **4811046.631sft**
Mapping Angle: **-0°16'44"** Combination Scale Factor: **0.999904364**

laRCS Zone 2 Northing: **9707938.125sft** Easting: **12188844.320sft**
Mapping Angle: **-00° 47' 40"** Combination Scale Factor: **1.000003147**

Monument Type: Existing rod type monument with aluminum cap set by others.



This document was prepared by Dan Corbin, Inc. on April 30, 2015 for Hancock County, Iowa.