

Hancock County, Iowa

Horizontal Datum: **NAD 83(2011)** - Vertical Datum: **NAVD 1988**
Iowa State Plane North Zone (1401)
Iowa Regional Coordinate System, Zone 2. Mason City (LCC)
US Survey Feet
2015

Point Name: **1003**

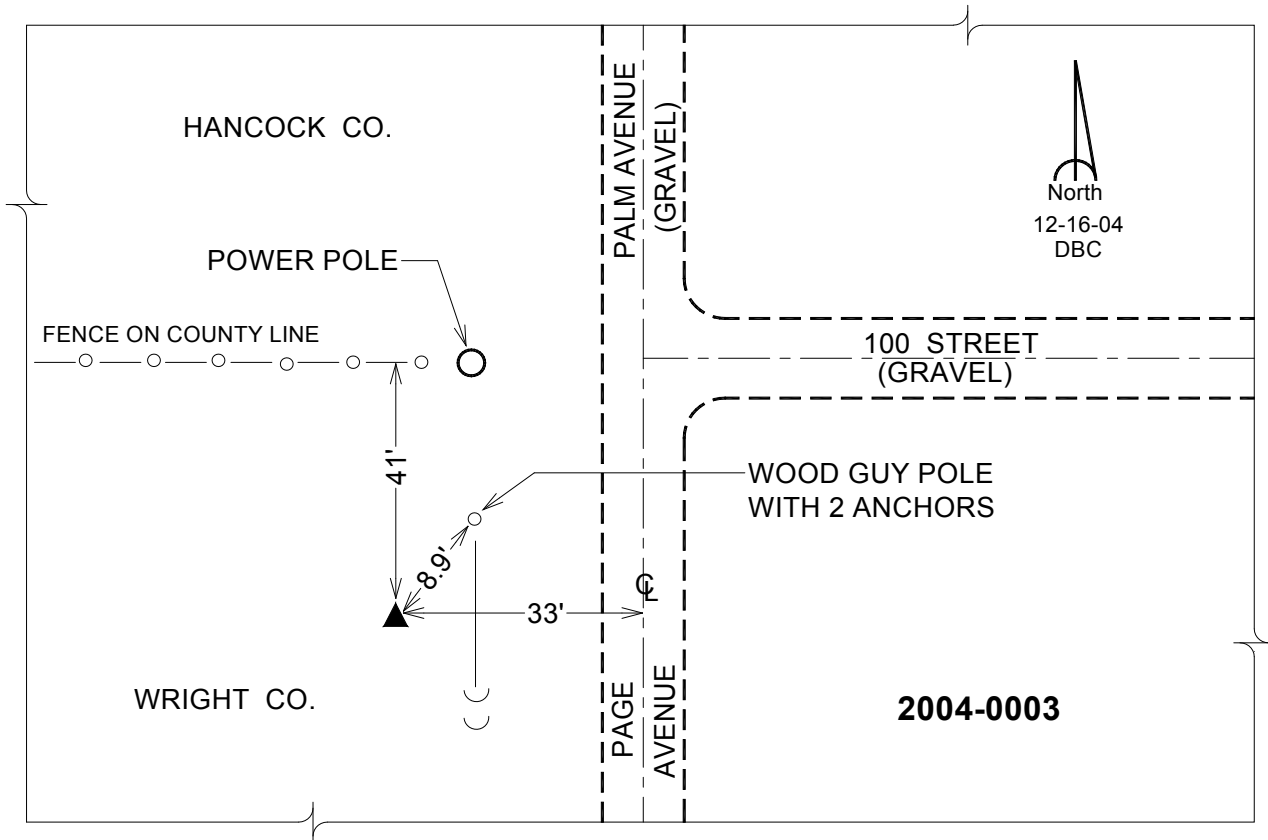
Designation: WRIGHT CO 0003 (Set by Veenstra & Kimm, Inc. in 2004)

NAD 83(NA2011) Latitude: **N42°54'29.98228"** Longitude: **W93°40'32.81692"**
NAVD 88 Ortho Height: **1247.780sft** Ellip. Ht: **1153.943sft** Geoid12A

Iowa North Zone (1401) Northing: **3794115.158sft** Easting: **4874156.605sft**
Mapping Angle: **-0°07'09"** Combination Scale Factor: **0.999899116**

laRCS Zone 2 Northing: **9707207.679sft** Easting: **12251956.523sft**
Mapping Angle: **-00° 38' 00"** Combination Scale Factor: **0.999997856**

Monument Type: Existing rod type monument with aluminum cap set by others.



This document was prepared by Dan Corbin, Inc. on April 30, 2015 for Hancock County, Iowa.