

Hancock County, Iowa

Horizontal Datum: **NAD 83(2011)** - Vertical Datum: **NAVD 1988**
Iowa State Plane North Zone (1401)
Iowa Regional Coordinate System, Zone 2. Mason City (LCC)
US Survey Feet
2015

Point Name: **1004**

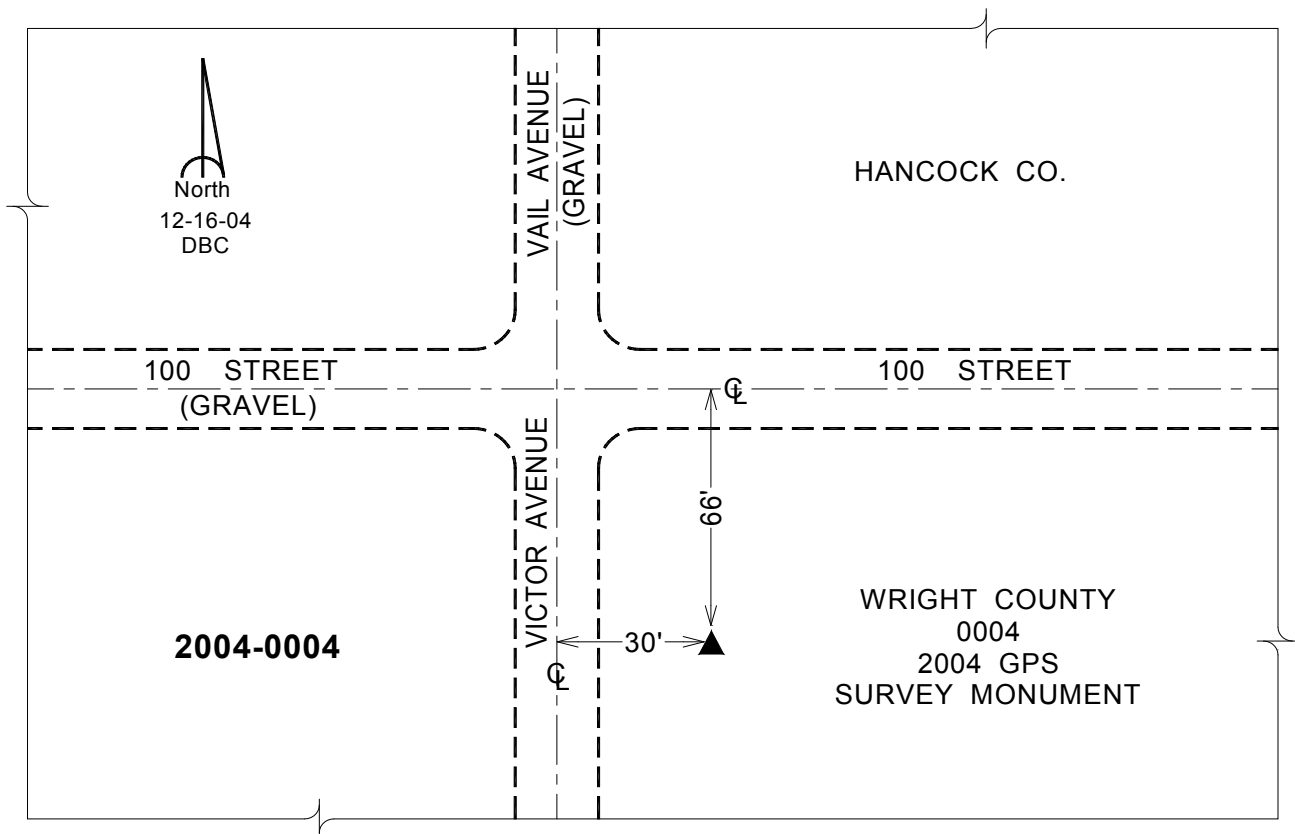
Designation: WRIGHT CO 0004 (Set by Veenstra & Kimm, Inc. in 2004)

NAD 83(NA2011) Latitude: **N42°54'30.56677"** Longitude: **W93°33'28.14837"**
NAVD 88 Ortho Height: **1251.280sft** Ellip. Ht: **1159.151sft** Geoid12A

Iowa North Zone (1401) Northing: **3794130.666sft** Easting: **4905759.905sft**
Mapping Angle: **-0°02'21"** Combination Scale Factor: **0.99989888**

laRCS Zone 2 Northing: **9706939.741sft** Easting: **12283561.818sft**
Mapping Angle: **-00° 33' 10"** Combination Scale Factor: **0.999997594**

Monument Type: Existing rod type monument with aluminum cap set by others.



This document was prepared by Dan Corbin, Inc. on April 30, 2015 for Hancock County, Iowa.