

Hancock County, Iowa

Horizontal Datum: **NAD 83(2011)** - Vertical Datum: **NAVD 1988**
Iowa State Plane North Zone (1401)
Iowa Regional Coordinate System, Zone 2. Mason City (LCC)
US Survey Feet
2015

Point Name: **302**

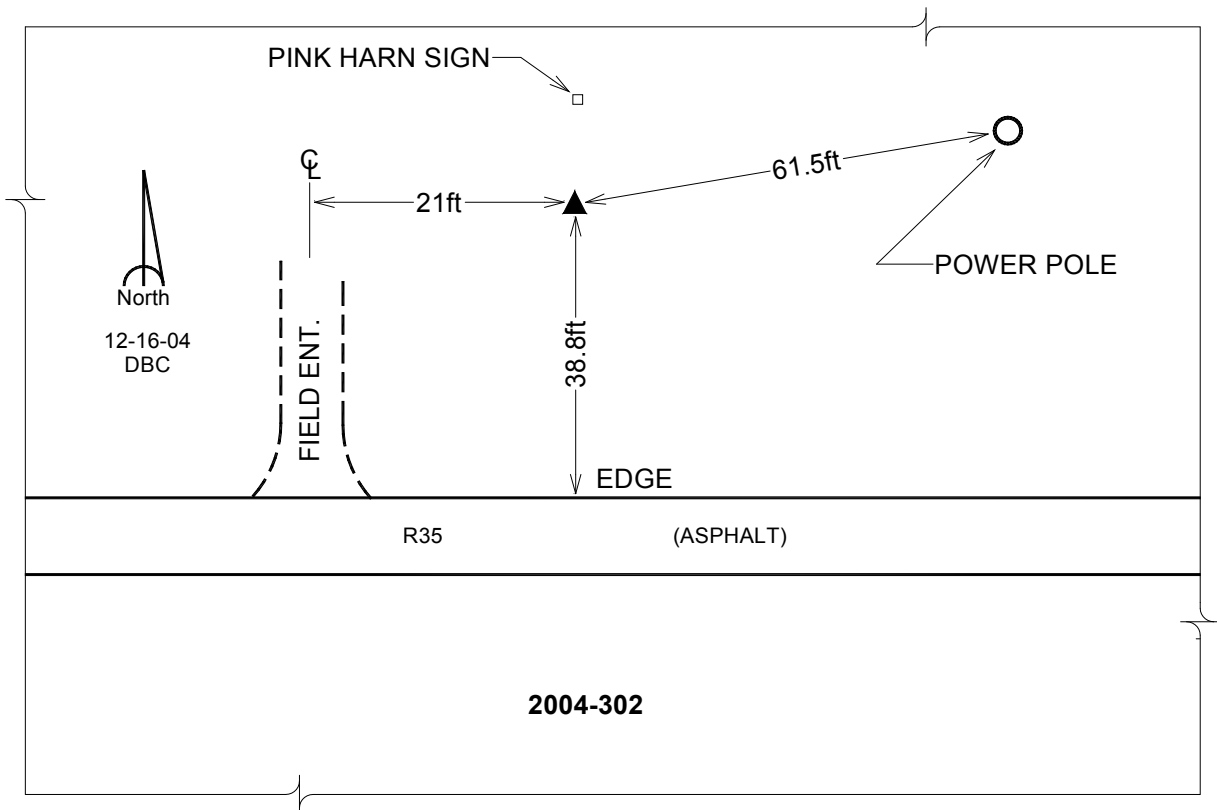
Designation: CBN control station designation CLOVER PID: OO1209

NAD 83(NA2011) Latitude: **N43°13'38.05243"** Longitude: **W93°50'59.62246"**
NAVD 88 Ortho Height: **1305.590sft** Ellip. Ht: **1209.219sft** Geoid12A

Iowa North Zone (1401) Northing: **3910491.890sft** Easting: **4827991.840sft**
Mapping Angle: **-0°14'14"** Combination Scale Factor: **0.999935342**

IaRCS Zone 2 Northing: **9824003.202sft** Easting: **12206835.808sft**
Mapping Angle: **-00° 45' 09"** Combination Scale Factor: **0.999985656**

Monument Type: Existing concrete post monument with a brass disk set in the top.



This document was prepared by Dan Corbin, Inc. on April 30, 2015 for Hancock County, Iowa.