

Hancock County, Iowa

Horizontal Datum: **NAD 83(2011)** - Vertical Datum: **NAVD 1988**
Iowa State Plane North Zone (1401)
Iowa Regional Coordinate System, Zone 2. Mason City (LCC)
US Survey Feet
2015

Point Name: **G103**

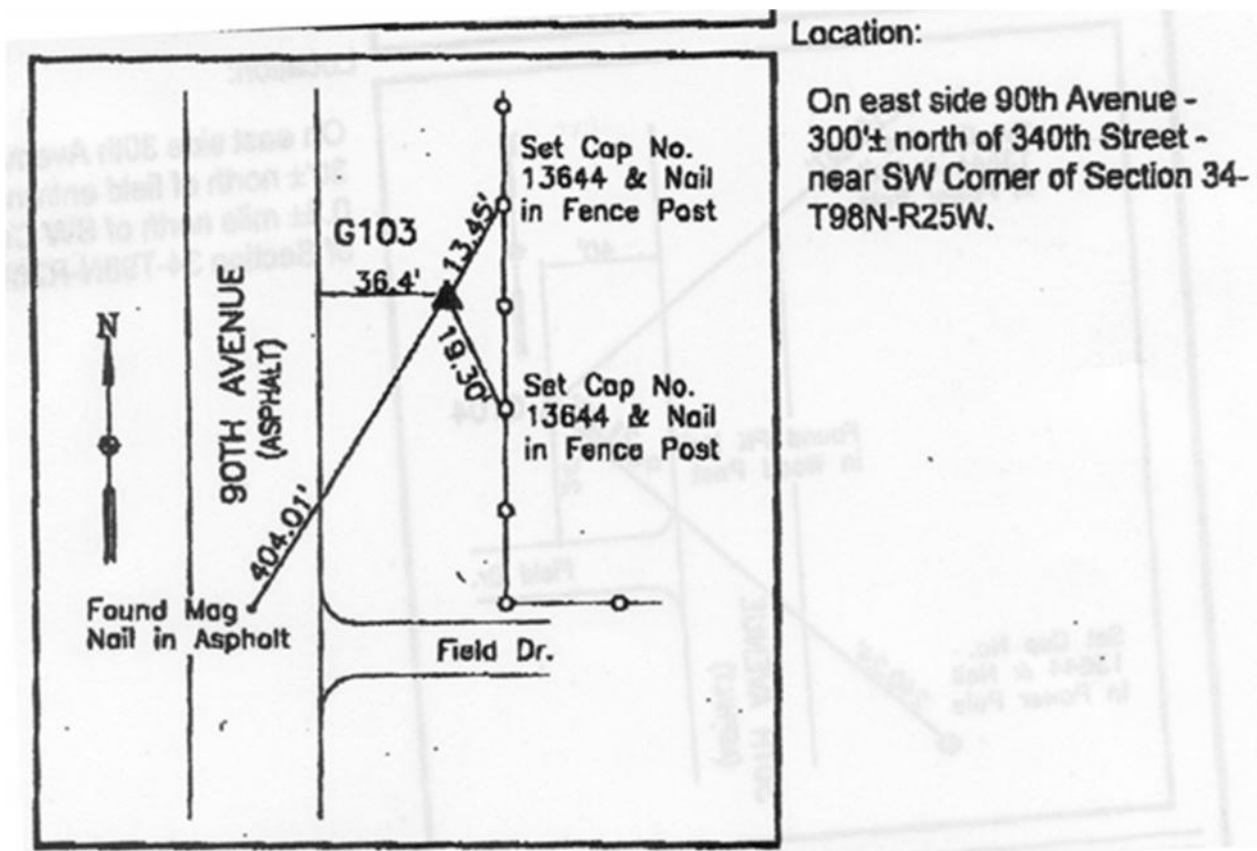
Designation: WINNEBAGO CO G103 (Set by WHKS & Co. in 2002)

NAD 83(NA2011) Latitude: **N43°15'23.60588"** Longitude: **W93°47'33.20934"**
NAVD 88 Ortho Height: **1300.282sft** Ellip. Ht: **1203.713sft** Geoid12A

Iowa North Zone (1401) Northing: **3921120.769sft** Easting: **4843310.882sft**
Mapping Angle: **-0°11'54"** Combination Scale Factor: **0.999940739**

laRCS Zone 2 Northing: **9834494.428sft** Easting: **1222250.537sft**
Mapping Angle: **-00° 42' 48"** Combination Scale Factor: **0.999986589**

Monument Type: Existing 5/8" X 6'-0" Long Aluminum Rod with cap stamped G103 and NGS Style Acces Cover 2" Deep.



This document was prepared by Dan Corbin, Inc. on April 30, 2015 for Hancock County, Iowa.