

Hancock County, Iowa

Horizontal Datum: **NAD 83(2011)** - Vertical Datum: **NAVD 1988**
Iowa State Plane North Zone (1401)
Iowa Regional Coordinate System, Zone 2. Mason City (LCC)
US Survey Feet
2015

Point Name: **G104**

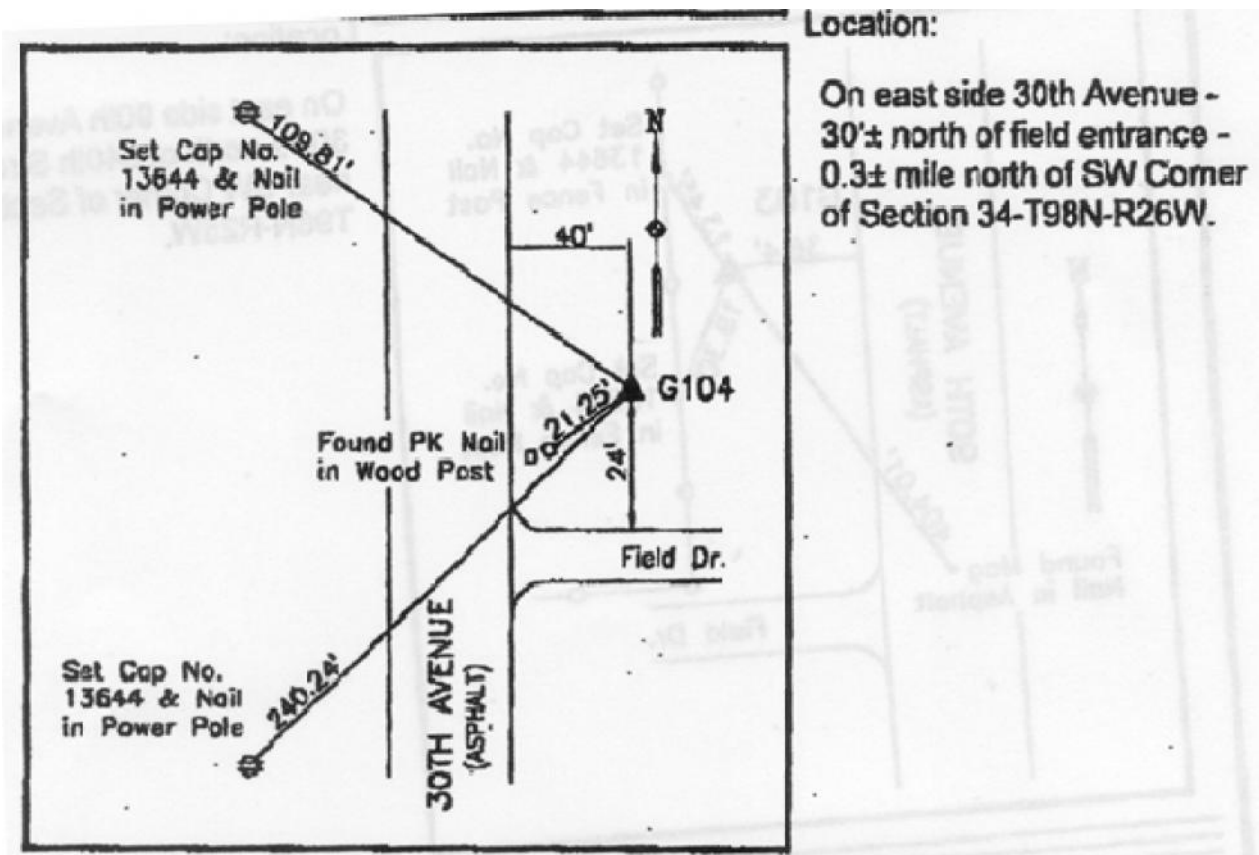
Designation: WINNEBAGO CO G104 (Set by WHKS & Co. in 2002)

NAD 83(NA2011) Latitude: **N43°15'31.25265"** Longitude: **W93°54'40.75092"**
NAVD 88 Ortho Height: **1228.340sft** Ellip. Ht: **1132.478sft** Geoid12A

Iowa North Zone (1401) Northing: **3922026.693sft** Easting: **4811676.125sft**
Mapping Angle: **-0°16'44"** Combination Scale Factor: **0.99994452**

laRCS Zone 2 Northing: **9835684.899sft** Easting: **12190623.757sft**
Mapping Angle: **-00° 47' 40"** Combination Scale Factor: **0.999990059**

Monument Type: Existing 5/8" X 6'-0" Long Aluminum Rod with cap stamped G104 and NGS Style Acces Cover 2" Deep.



This document was prepared by Dan Corbin, Inc. on April 30, 2015 for Hancock County, Iowa.