

GPS SURVEY MARK DESCRIPTION

GIS MAPPING BY:
THE SIDWELL COMPANY
WEST CHICAGO, ILLINOIS

THE OFFICE OF THE
COUNTY ENGINEER
HARDIN COUNTY, IOWA

DESIGNATION 862231 3 GPS No. 8010 COUNTY HARDIN STATE IOWA

LOCATED IN SECTION 31 TWP 86 N RGE 22 W USGS QUAD MAP McCALLSBURG

TO REACH FROM _____

AT THE SOUTHWEST CORNER OF THE COUNTY IN THE NORTHEAST QUADRANT OF ZUBLIN AVENUE

AND 400th STREET (HAMILTON COUNTY).

MARK 3-1/4" ALUMINUM DISK SET IN 12" DIAMETER POURED-IN-PLACE CONCRETE MONUMENT

MARK EXISTING VALUES AS PUBLISHED BY _____

MARK SET VALUES ESTABLISHED BY DENI ASSOCIATES, INC. DATE 1998

HORIZONTAL VALUES ORIGINATED ON ORDER "B" IOWA HIGH ACCURACY REFERENCE NETWORK (HARN) CONTROL ESTABLISHED BY THE NATIONAL GEODETIC SURVEY AND BASED ON THE NORTH AMERICAN DATUM OF 1983, 1996 ADJUSTMENT.

IOWA COORDINATE SYSTEM, NORTH ZONE SCALE FACTOR: 0.99997717

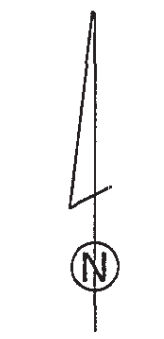
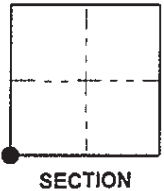
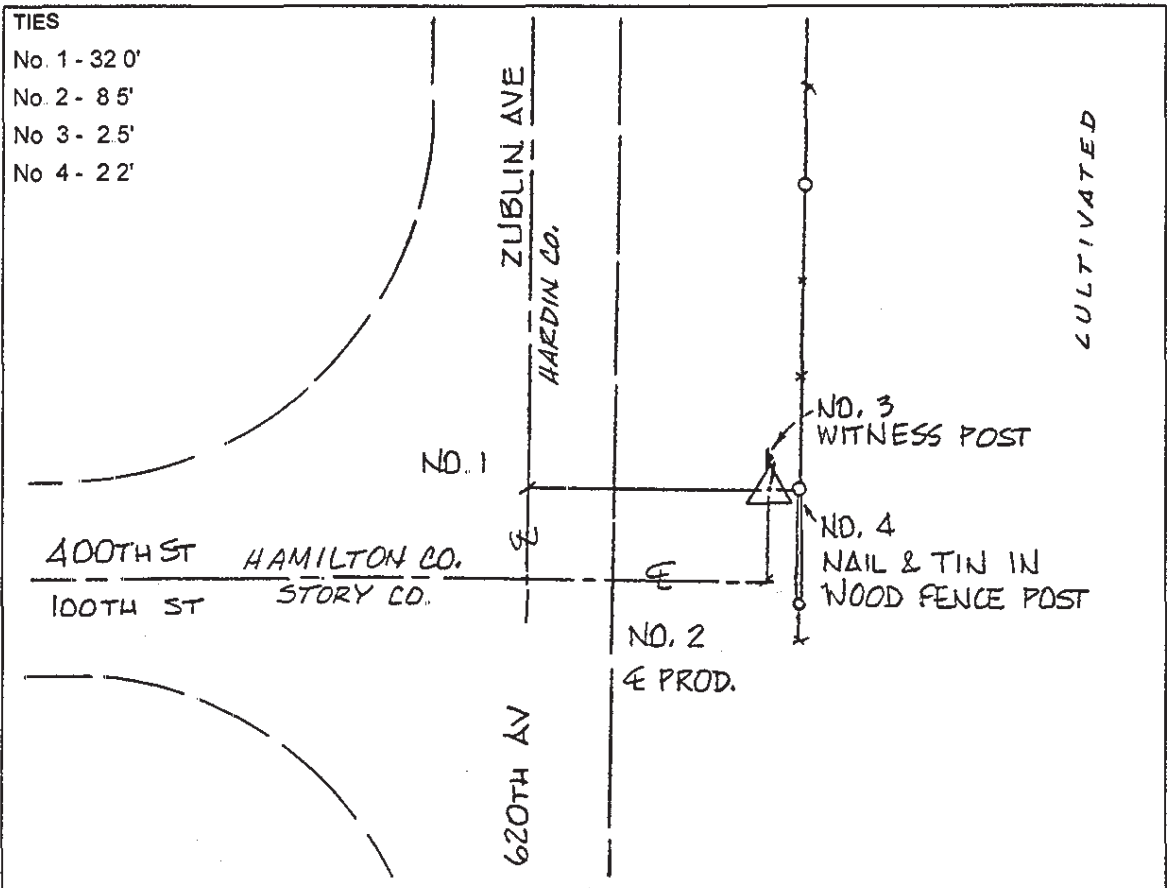
COORDINATES (US FEET) COORDINATES (METERS)

NORTHING (Y) 3539324.38 NORTHING (Y) 1078788.227

EASTING (X) 4931288.88 EASTING (X) 1503059.856

VERTICAL VALUES ORIGINATED ON VERTICAL CONTROL ESTABLISHED BY THE NATIONAL GEODETIC SURVEY AND/OR THE U.S. GEOLOGICAL SURVEY AND BASED ON THE NORTH AMERICAN VERTICAL DATUM OF 1988.

ELEVATION (US FEET) 1115.00 ELEVATION (METERS) 339.85



SKETCH
BY DSW
DENI 9803001