

# GPS SURVEY MARK DESCRIPTION

GIS MAPPING BY:  
THE SIDWELL COMPANY  
WEST CHICAGO, ILLINOIS

THE OFFICE OF THE  
COUNTY ENGINEER  
HARDIN COUNTY, IOWA

DESIGNATION 872233 2 GPS No. 8013 COUNTY HARDIN STATE IOWA

LOCATED IN SECTION 33 TWP 87 N RGE 22 W USGS QUAD MAP RADCLIFFE

TO REACH FROM \_\_\_\_\_

AT THE INTERSECTION OF 280th STREET AND E AVENUE, IN THE NORTHWEST QUADRANT.

MARK 3-1/4" ALUMINUM DISK SET IN 12" DIAMETER POURED-IN-PLACE CONCRETE MONUMENT

MARK EXISTING     VALUES AS PUBLISHED BY \_\_\_\_\_

MARK SET         VALUES ESTABLISHED BY DENI ASSOCIATES, INC. DATE 1998

HORIZONTAL VALUES ORIGINATED ON ORDER "B" IOWA HIGH ACCURACY REFERENCE NETWORK (HARN) CONTROL ESTABLISHED BY THE NATIONAL GEODETIC SURVEY AND BASED ON THE NORTH AMERICAN DATUM OF 1983, 1996 ADJUSTMENT.

IOWA COORDINATE SYSTEM, NORTH ZONE

SCALE FACTOR: 0.99996628

COORDINATES (US FEET)

COORDINATES (METERS)

NORTHING (Y) 3570961.25

NORTHING (Y) 1088431.164

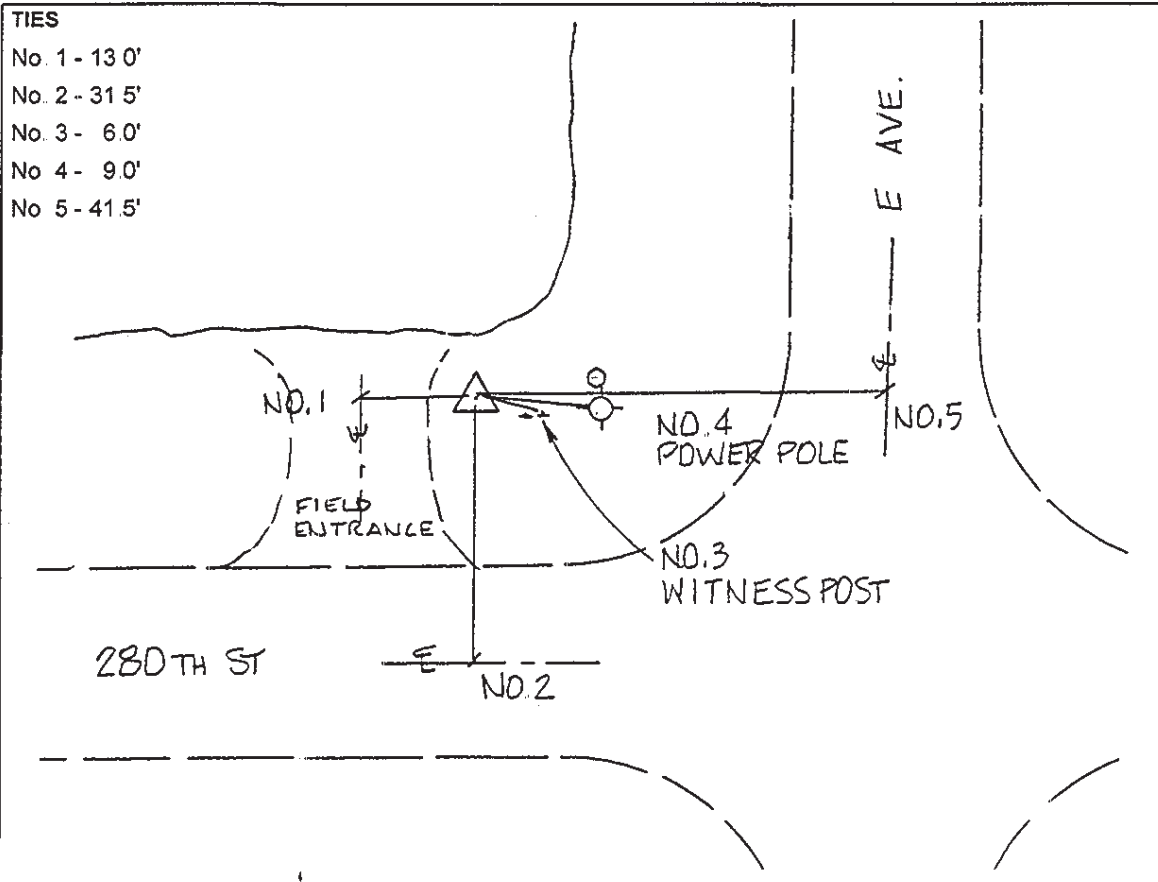
EASTING (X) 4946914.65

EASTING (X) 1507822.600

VERTICAL VALUES ORIGINATED ON VERTICAL CONTROL ESTABLISHED BY THE NATIONAL GEODETIC SURVEY AND / OR THE U.S. GEOLOGICAL SURVEY AND BASED ON THE NORTH AMERICAN VERTICAL DATUM OF 1988.

ELEVATION (US FEET) 1189.25

ELEVATION (METERS) 362.48



SKETCH  
BY DSW  
DENI 9803001