

# GPS SURVEY MARK DESCRIPTION

GIS MAPPING BY:  
THE SIDWELL COMPANY  
WEST CHICAGO, ILLINOIS

THE OFFICE OF THE  
COUNTY ENGINEER  
HARDIN COUNTY, IOWA

DESIGNATION 882234 3 GPS No. 8015 COUNTY HARDIN STATE IOWA  
 LOCATED IN SECTION 34 TWP 88 N RGE 22 W USGS QUAD MAP BUCKEYE WEST  
 TO REACH FROM THE INTERSECTION OF 220th STREET AND E AVENUE; GO EAST 900 FEET,  
MORE OR LESS, TO MARK.

MARK 3-1/4" ALUMINUM DISK SET IN 12" DIAMETER POURED-IN-PLACE CONCRETE MONUMENT

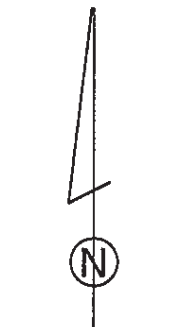
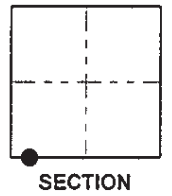
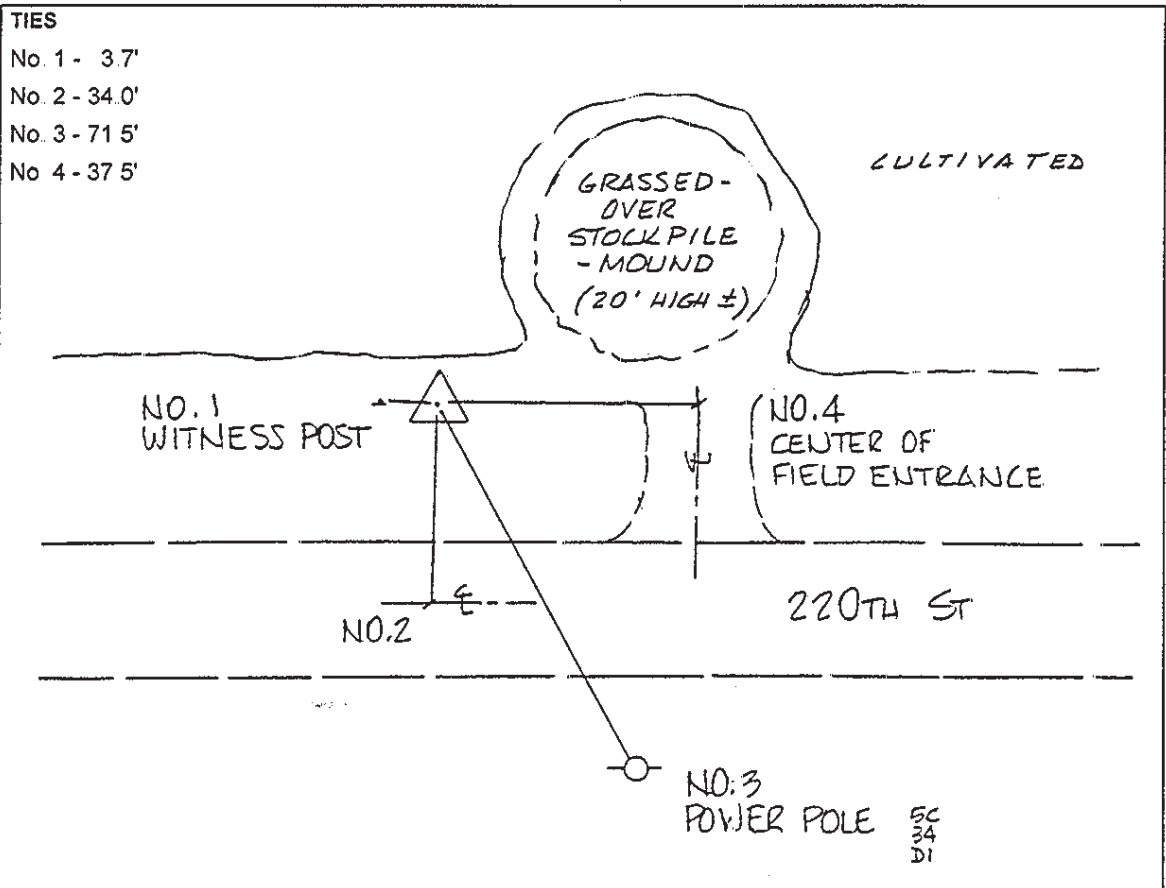
MARK EXISTING     VALUES AS PUBLISHED BY \_\_\_\_\_  
 MARK SET         VALUES ESTABLISHED BY DENI ASSOCIATES, INC. DATE 1998

HORIZONTAL VALUES ORIGINATED ON ORDER "B" IOWA HIGH ACCURACY REFERENCE NETWORK (HARN) CONTROL ESTABLISHED BY THE NATIONAL GEODETIC SURVEY AND BASED ON THE NORTH AMERICAN DATUM OF 1983, 1996 ADJUSTMENT.

|                                    |                                 |
|------------------------------------|---------------------------------|
| IOWA COORDINATE SYSTEM, NORTH ZONE | SCALE FACTOR: <u>0.99995759</u> |
| COORDINATES (US FEET)              | COORDINATES (METERS)            |
| NORTHING (Y) <u>3602878.03</u>     | NORTHING (Y) <u>1098159.420</u> |
| EASTING (X) <u>4947844.31</u>      | EASTING (X) <u>1508105.961</u>  |

VERTICAL VALUES ORIGINATED ON VERTICAL CONTROL ESTABLISHED BY THE NATIONAL GEODETIC SURVEY AND/OR THE U.S. GEOLOGICAL SURVEY AND BASED ON THE NORTH AMERICAN VERTICAL DATUM OF 1988.

ELEVATION (US FEET) 1135.05 ELEVATION (METERS) 345.97



SKETCH  
 BY DSW  
 DENI 9803001