

# GPS SURVEY MARK DESCRIPTION

GIS MAPPING BY:  
THE SIDWELL COMPANY  
WEST CHICAGO, ILLINOIS

THE OFFICE OF THE  
COUNTY ENGINEER  
HARDIN COUNTY, IOWA

DESIGNATION 892104 1 GPS No. 8022 COUNTY HARDIN STATE IOWA  
 LOCATED IN SECTION 4 TWP 89 N RGE 21 W USGS QUAD MAP IOWA FALLS WEST  
 TO REACH FROM THE INTERSECTION OF COUNTY HIGHWAY C73 / HARDIN STREET AND COUNTY HIGHWAY S33;  
GO WEST 0.65 MILE TO CENTER LINE OF FIELD ENTRANCE TO SOUTH AND MARK.

MARK 3-1/4" ALUMINUM DISK SET IN 12" DIAMETER POURED-IN-PLACE CONCRETE MONUMENT

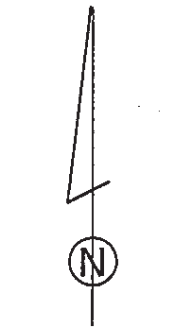
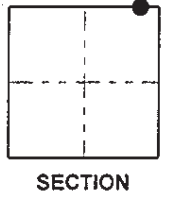
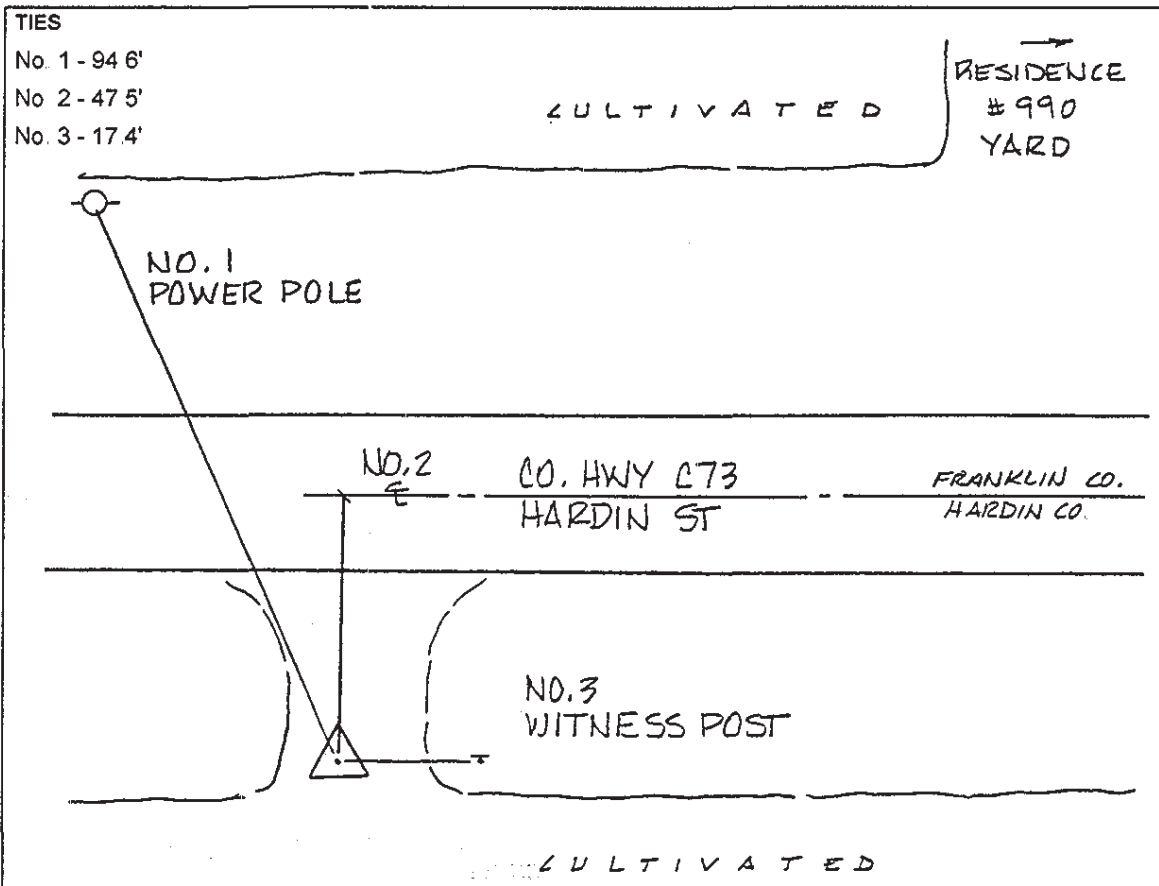
MARK EXISTING     VALUES AS PUBLISHED BY \_\_\_\_\_  
 MARK SET         VALUES ESTABLISHED BY DENI ASSOCIATES, INC.    DATE 1998

HORIZONTAL VALUES ORIGINATED ON ORDER "B" IOWA HIGH ACCURACY REFERENCE NETWORK (HARN) CONTROL ESTABLISHED BY THE NATIONAL GEODETIC SURVEY AND BASED ON THE NORTH AMERICAN DATUM OF 1983, 1996 ADJUSTMENT.

|                                    |                                 |
|------------------------------------|---------------------------------|
| IOWA COORDINATE SYSTEM, NORTH ZONE | SCALE FACTOR: <u>0.99994722</u> |
| COORDINATES (US FEET)              | COORDINATES (METERS)            |
| NORTHING (Y) <u>3666160.31</u>     | NORTHING (Y) <u>1117447.898</u> |
| EASTING (X) <u>4968629.67</u>      | EASTING (X) <u>1514441.353</u>  |

VERTICAL VALUES ORIGINATED ON VERTICAL CONTROL ESTABLISHED BY THE NATIONAL GEODETIC SURVEY AND / OR THE U.S. GEOLOGICAL SURVEY AND BASED ON THE NORTH AMERICAN VERTICAL DATUM OF 1988.

ELEVATION (US FEET) 1166.15                      ELEVATION (METERS) 355.44



SKETCH  
BY DSW

DENI 9803001