

GPS SURVEY MARK DESCRIPTION

GIS MAPPING BY:
THE SIDWELL COMPANY
WEST CHICAGO, ILLINOIS

THE OFFICE OF THE
COUNTY ENGINEER
HARDIN COUNTY, IOWA

DESIGNATION 862106 4 GPS No. 8028 COUNTY HARDIN STATE IOWA
 LOCATED IN SECTION 6 TWP 86 N RGE 21 W USGS QUAD MAP HUBBARD
 TO REACH FROM THE INTERSECTION OF 280th STREET AND H AVENUE; GO EAST 0.25 MILE TO MARK.

MARK 3-1/4" ALUMINUM DISK SET IN 12" DIAMETER POURED-IN-PLACE CONCRETE MONUMENT

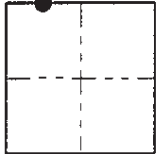
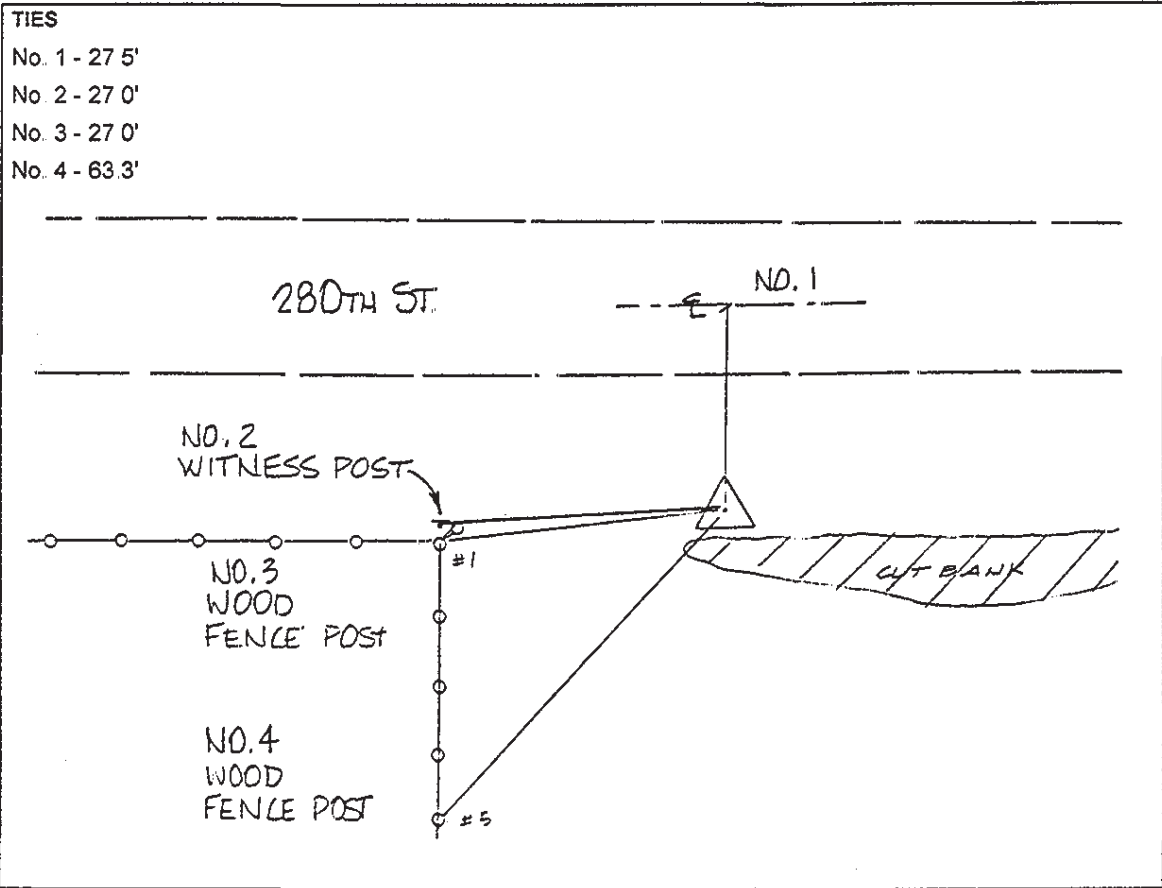
MARK EXISTING VALUES AS PUBLISHED BY _____
 MARK SET VALUES ESTABLISHED BY DENI ASSOCIATES, INC. DATE 1998

HORIZONTAL VALUES ORIGINATED ON ORDER "B" IOWA HIGH ACCURACY REFERENCE NETWORK (HARN) CONTROL ESTABLISHED BY THE NATIONAL GEODETIC SURVEY AND BASED ON THE NORTH AMERICAN DATUM OF 1983, 1996 ADJUSTMENT.

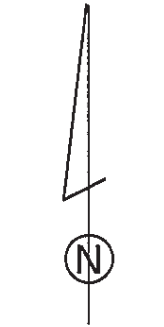
IOWA COORDINATE SYSTEM, NORTH ZONE	SCALE FACTOR: <u>0.99996630</u>
COORDINATES (US FEET)	COORDINATES (METERS)
NORTHING (Y) <u>3570914.71</u>	NORTHING (Y) <u>1088416.981</u>
EASTING (X) <u>4964044.16</u>	EASTING (X) <u>1513043.685</u>

VERTICAL VALUES ORIGINATED ON VERTICAL CONTROL ESTABLISHED BY THE NATIONAL GEODETIC SURVEY AND/OR THE U.S. GEOLOGICAL SURVEY AND BASED ON THE NORTH AMERICAN VERTICAL DATUM OF 1988.

ELEVATION (US FEET) 1087.48 ELEVATION (METERS) 331.47



SECTION



SKETCH
BY DSW
DENI 9803001