

GPS SURVEY MARK DESCRIPTION

GIS MAPPING BY:
THE SIDWELL COMPANY
WEST CHICAGO, ILLINOIS

THE OFFICE OF THE
COUNTY ENGINEER
HARDIN COUNTY, IOWA

DESIGNATION 892006 4 GPS No. 8039 COUNTY HARDIN STATE IOWA
 LOCATED IN SECTION 6 TWP 89 N RGE 20 W USGS QUAD MAP IOWA FALLS WEST
 TO REACH FROM THE INTERSECTION OF COUNTY HIGHWAY C73 / HARDIN STREET AND U.S. HIGHWAY 65;
GO WEST 0.15 MILE TO OLD HIGHWAY 65 / L AVENUE; THEN SOUTH 500 FEET, MORE OR LESS, TO
SOUTHERLY POINT OF GRASS MEDIAN TRIANGLE AND MARK.

MARK 3-1/4" ALUMINUM DISK SET IN 12" DIAMETER POURED-IN-PLACE CONCRETE MONUMENT

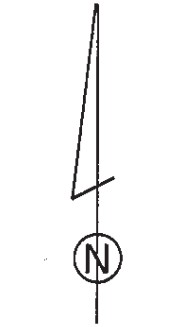
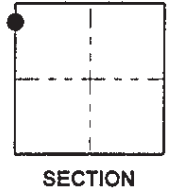
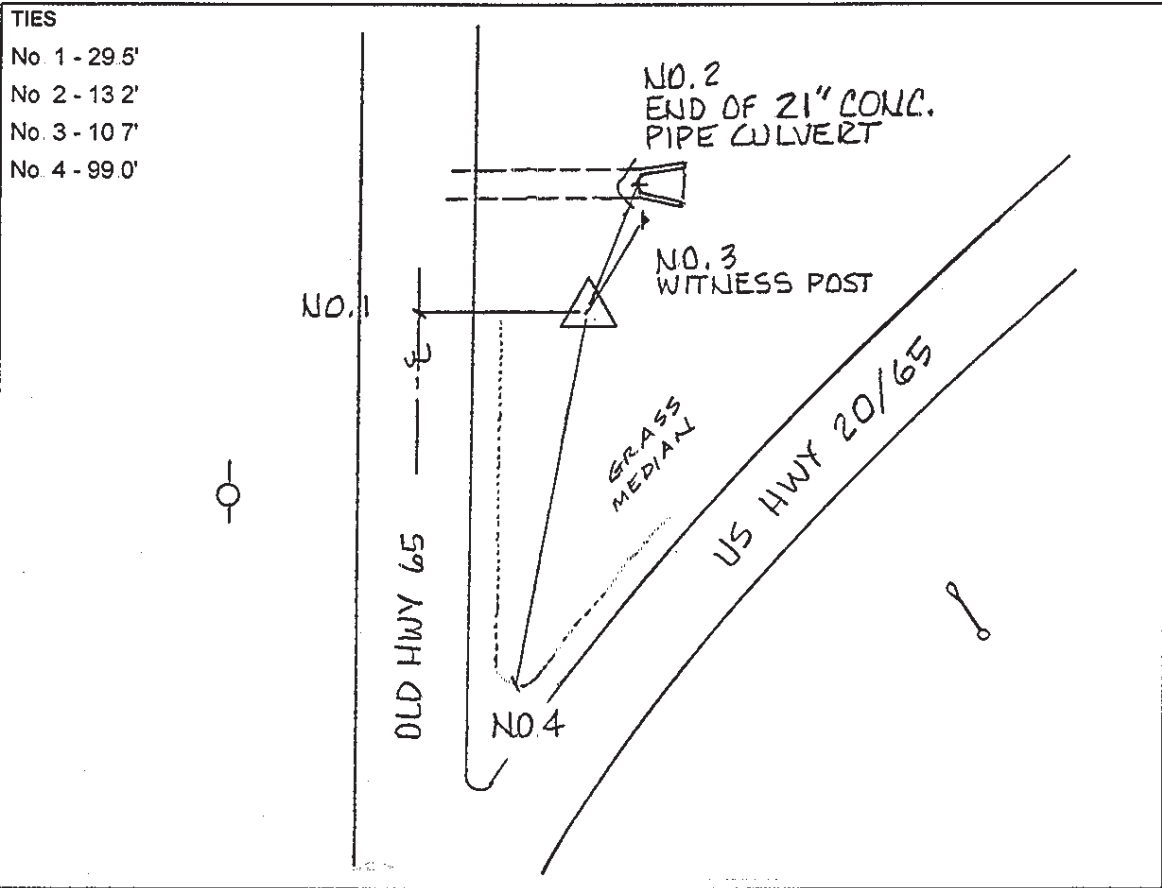
MARK EXISTING VALUES AS PUBLISHED BY _____
 MARK SET VALUES ESTABLISHED BY DENI ASSOCIATES, INC. DATE 1998

HORIZONTAL VALUES ORIGINATED ON ORDER "B" IOWA HIGH ACCURACY REFERENCE NETWORK (HARN) CONTROL ESTABLISHED BY THE NATIONAL GEODETIC SURVEY AND BASED ON THE NORTH AMERICAN DATUM OF 1983, 1996 ADJUSTMENT.

IOWA COORDINATE SYSTEM, NORTH ZONE	SCALE FACTOR: <u>0.99994727</u>
COORDINATES (US FEET)	COORDINATES (METERS)
NORTHING (Y) <u>3665636.10</u>	NORTHING (Y) <u>1117288.118</u>
EASTING (X) <u>4985364.62</u>	EASTING (X) <u>1519542.176</u>

VERTICAL VALUES ORIGINATED ON VERTICAL CONTROL ESTABLISHED BY THE NATIONAL GEODETIC SURVEY AND/OR THE U.S. GEOLOGICAL SURVEY AND BASED ON THE NORTH AMERICAN VERTICAL DATUM OF 1988.

ELEVATION (US FEET) 1153.66 ELEVATION (METERS) 351.64



SKETCH
BY DSW
DENI 9803001