

Hardin County, Iowa

Horizontal Datum: **NAD 83(NA2011)** - Vertical Datum: **NAVD 1988**
Iowa State Plane North Zone (1401)
Iowa Regional Coordinate System, Zone 4, Sioux City-Iowa Falls LCC
US Survey Feet
9/30/18

Point Name: **7001**

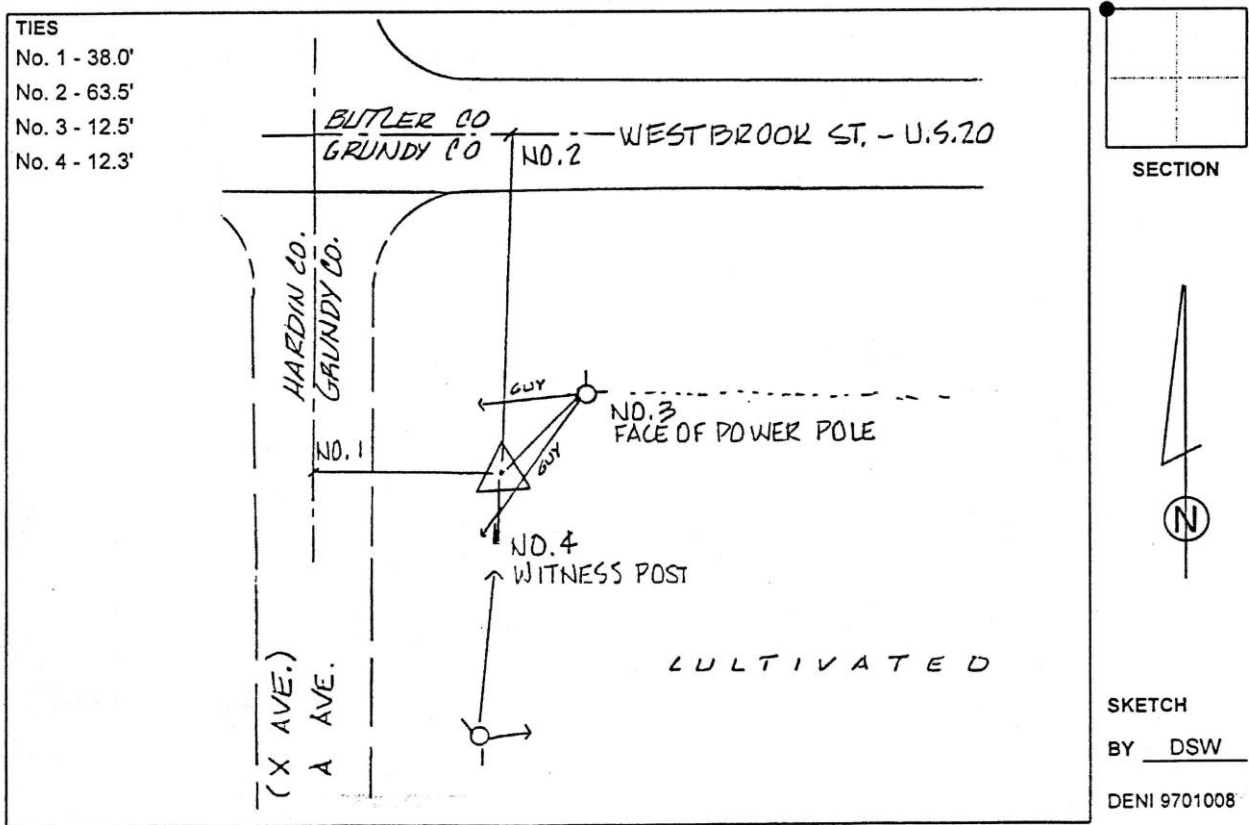
Designation: 891806 4 (Set by Deni Associates in 1997)

NAD 83(NA2011) Latitude: **N42°33'23.87533"** Longitude: **W93°01'36.68332"**
NAVD 88 Ortho Height: **1068.540sft** Ellip. Ht: **965.533sft** Geoid**12B**

Iowa North Zone (1401) Northing: **3666250.502sft** Easting: **5048725.340sft**
Mapping Angle: **0°19'14"** Combination Scale Factor: **0.9999010868**

IaRCS Zone 4 Northing: **8613678.738sft** Easting: **14986718.171sft**
Mapping Angle: **1°13'16"** Combination Scale Factor: **0.9999989278**

Monument Type: 3-1/4" aluminum disk set in the top of a 12" dia. poured-in-place concrete monument.



This document was prepared by Dan Corbin, Inc. on February 18th, 2019 for Hardin County, Iowa.