

Hardin County, Iowa
 Horizontal Datum: **NAD 83(NA2011)** - Vertical Datum: **NAVD 1988**
 Iowa State Plane North Zone (1401)
 Iowa Regional Coordinate System, Zone 4, Sioux City-Iowa Falls LCC
 US Survey Feet
9/30/18

Point Name: **7002**

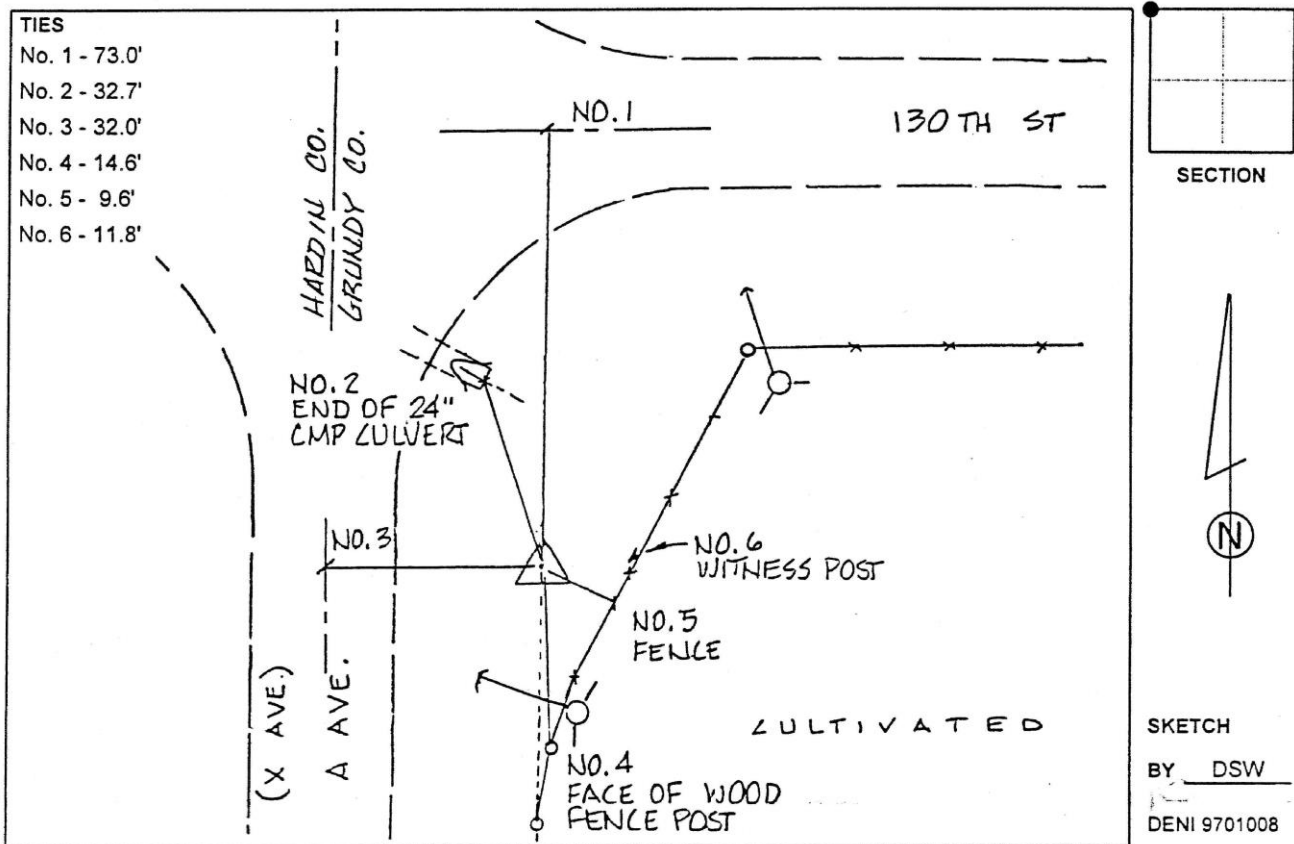
Designation: 891819 4 (Set by Deni Associates in 1997)

NAD 83(NA2011) Latitude: **N42°30'50.79792"** Longitude: **W93°01'35.83617"**
 NAVD 88 Ortho Height: **1090.740sft** Ellip. Ht: **987.435sft** Geoid**12B**

Iowa North Zone (1401) Northing: **3650755.067sft** Easting: **5048875.510sft**
 Mapping Angle: **0°19'15"** Combination Scale Factor: **0.9999017448**

IaRCS Zone 4 Northing: **8598186.075sft** Easting: **14987111.898sft**
 Mapping Angle: **1°13'17"** Combination Scale Factor: **0.9999978543**

Monument Type: 3-1/4" aluminum disk set in the top of a 12" dia. poured-in-place concrete monument.



This document was prepared by Dan Corbin, Inc. on February 18th, 2019 for Hardin County, Iowa.