

**Hardin County, Iowa**  
Horizontal Datum: **NAD 83(NA2011)** - Vertical Datum: **NAVD 1988**  
Iowa State Plane North Zone (1401)  
Iowa Regional Coordinate System, Zone 4, Sioux City-Iowa Falls LCC  
US Survey Feet  
**9/30/18**

Point Name: **7003**

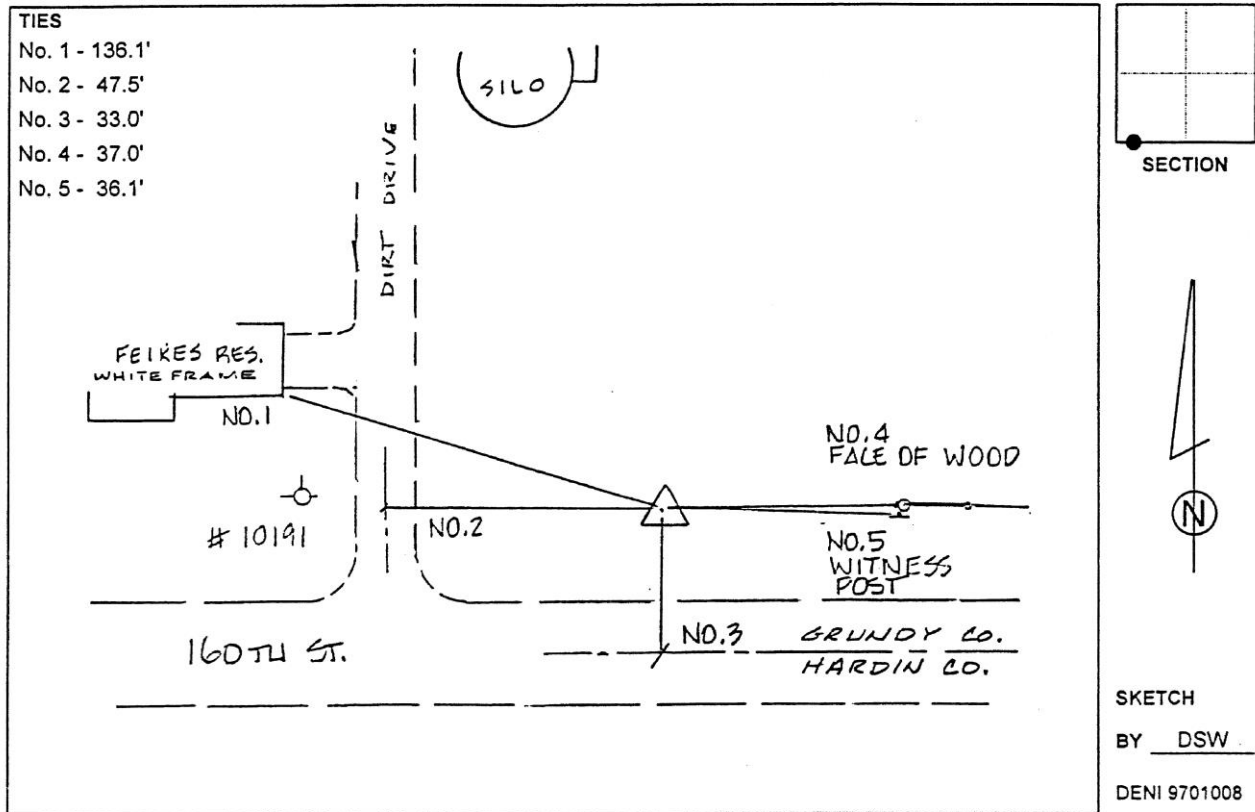
**Designation:** 891831 3 (Set by Deni Associates in 1997)

NAD 83(NA2011) Latitude: **N42°28'15.01066"** Longitude: **W93°01'23.54531"**  
NAVD 88 Ortho Height: **1070.810sft** Ellip. Ht: **967.244sft** **Geoid12B**

**Iowa North Zone (1401)** Northing: **3634990.227sft** Easting: **5049884.910sft**  
Mapping Angle: **0°19'23"** Combination Scale Factor: **0.9999050069**

**IaRCS Zone 4** Northing: **8582437.547sft** Easting: **14988369.066sft**  
Mapping Angle: **1°13'25"** Combination Scale Factor: **0.9999993556**

**Monument Type:** 3-1/4" aluminum disk set in the top of a 12" dia. poured-in-place concrete monument.



*This document was prepared by Dan Corbin, Inc. on February 18<sup>th</sup>, 2019 for Hardin County, Iowa.*