

Hardin County, Iowa
 Horizontal Datum: **NAD 83(NA2011)** - Vertical Datum: **NAVD 1988**
 Iowa State Plane North Zone (1401)
 Iowa Regional Coordinate System, Zone 4, Sioux City-Iowa Falls LCC
 US Survey Feet
9/30/18

Point Name: **7004**

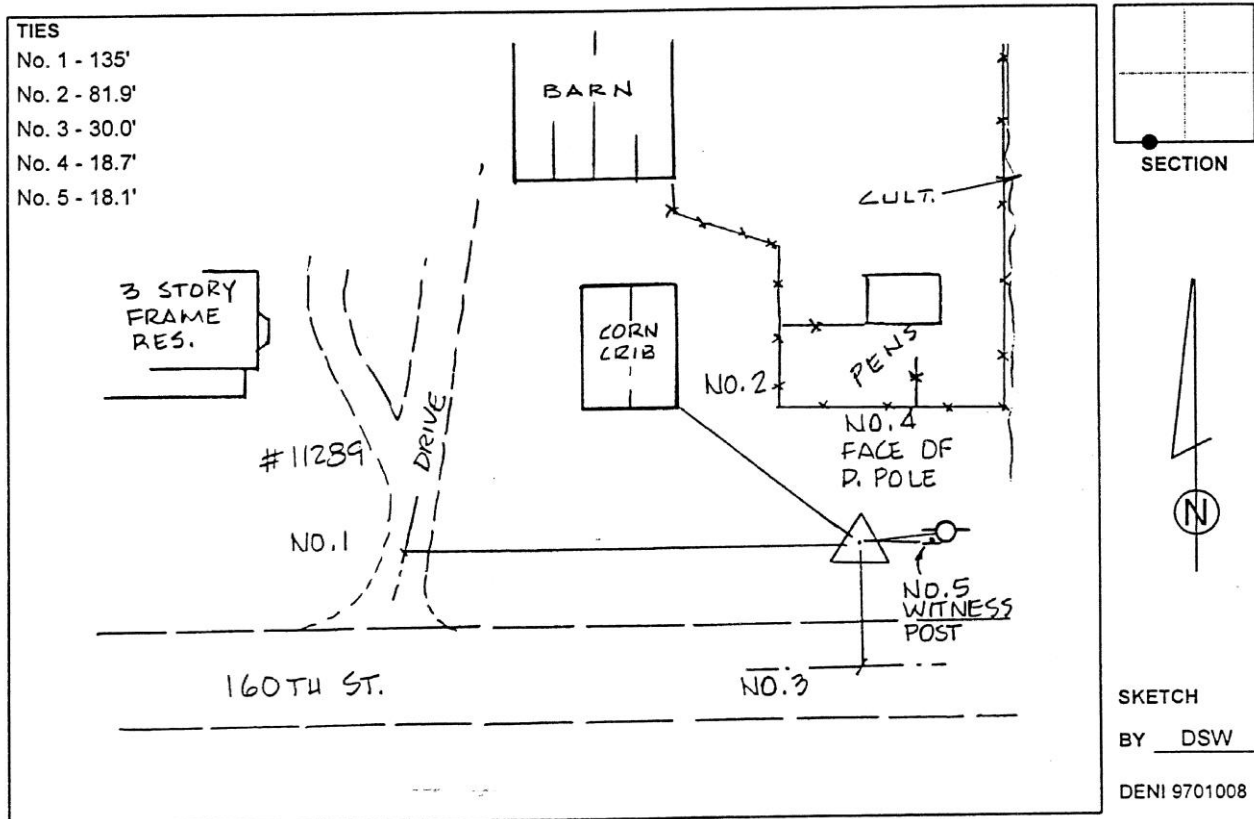
Designation: 891832 3 (Set by Deni Associates in 1997)

NAD 83(NA2011) Latitude: **N42°28'14.57098"** Longitude: **W93°00'02.19757"**
 NAVD 88 Ortho Height: **1056.898sft** Ellip. Ht: **953.073sft** **Geoid12B**

Iowa North Zone (1401) Northing: **3634980.918sft** Easting: **5055981.483sft**
 Mapping Angle: **0°20'18"** Combination Scale Factor: **0.9999056915**

laRCS Zone 4 Northing: **8582524.063sft** Easting: **14994465.607sft**
 Mapping Angle: **1°14'20"** Combination Scale Factor: **1.0000000353**

Monument Type: 3-1/4" aluminum disk set in the top of a 12" dia. poured-in-place concrete monument.



This document was prepared by Dan Corbin, Inc. on February 18th, 2019 for Hardin County, Iowa.