

**Hardin County, Iowa**  
 Horizontal Datum: **NAD 83(NA2011)** - Vertical Datum: **NAVD 1988**  
 Iowa State Plane North Zone (1401)  
 Iowa Regional Coordinate System, Zone 4, Sioux City-Iowa Falls LCC  
 US Survey Feet  
**9/30/18**

Point Name: **7008**

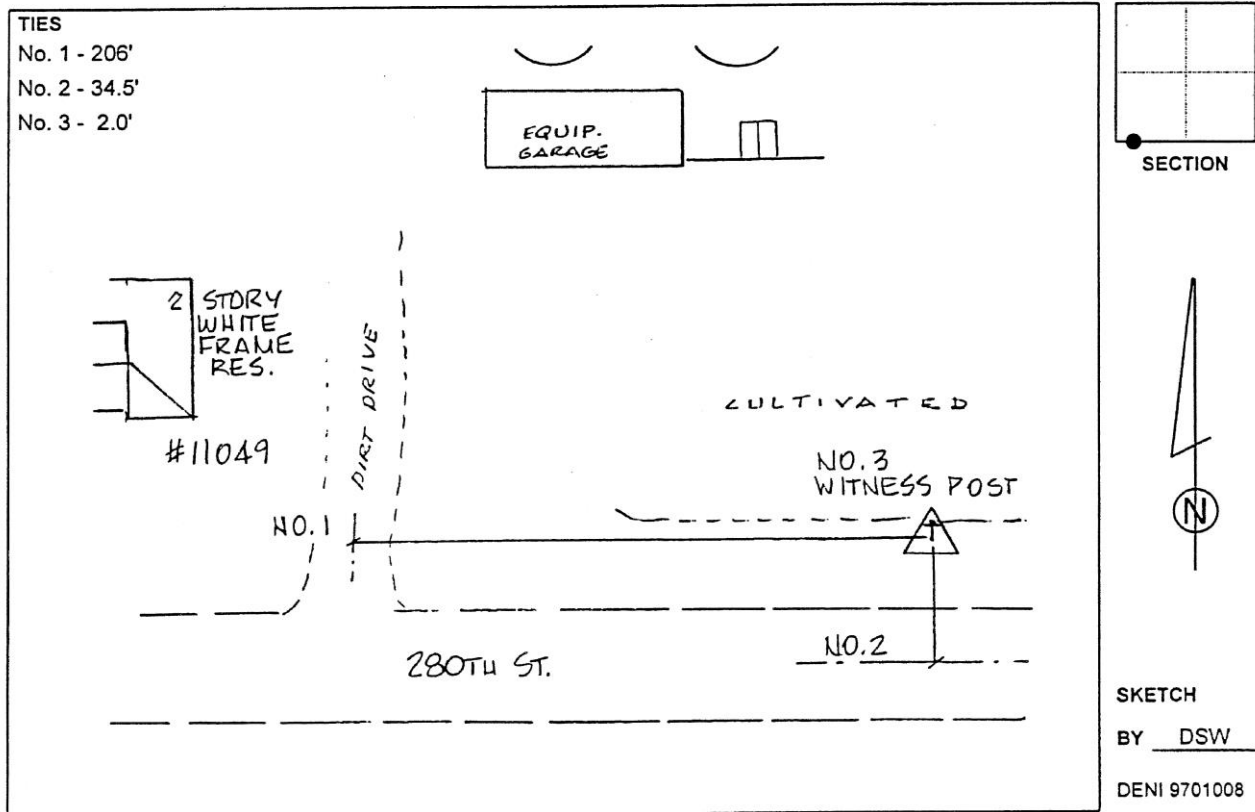
**Designation:** 871831 3 (Set by Deni Associates in 1997)

NAD 83(NA2011) Latitude: **N42°17'46.70209"** Longitude: **W93°00'01.25263"**  
 NAVD 88 Ortho Height: **1052.620sft** Ellip. Ht: **948.752sft** Geoid**12B**

**Iowa North Zone (1401)** Northing: **3571424.313sft** Easting: **5056427.945sft**  
 Mapping Angle: **0°20'19"** Combination Scale Factor: **0.9999209008**

**IaRCS Zone 4** Northing: **8518976.553sft** Easting: **14995911.000sft**  
 Mapping Angle: **1°14'21"** Combination Scale Factor: **1.0000081610**

**Monument Type:** 3-1/4" aluminum disk set in the top of a 12" dia. poured-in-place concrete monument.



*This document was prepared by Dan Corbin, Inc. on February 18<sup>th</sup>, 2019 for Hardin County, Iowa.*