

**Hardin County, Iowa**  
 Horizontal Datum: **NAD 83(NA2011)** - Vertical Datum: **NAVD 1988**  
 Iowa State Plane North Zone (1401)  
 Iowa Regional Coordinate System, Zone 4, Sioux City-Iowa Falls LCC  
 US Survey Feet  
**9/30/18**

Point Name: **7010**

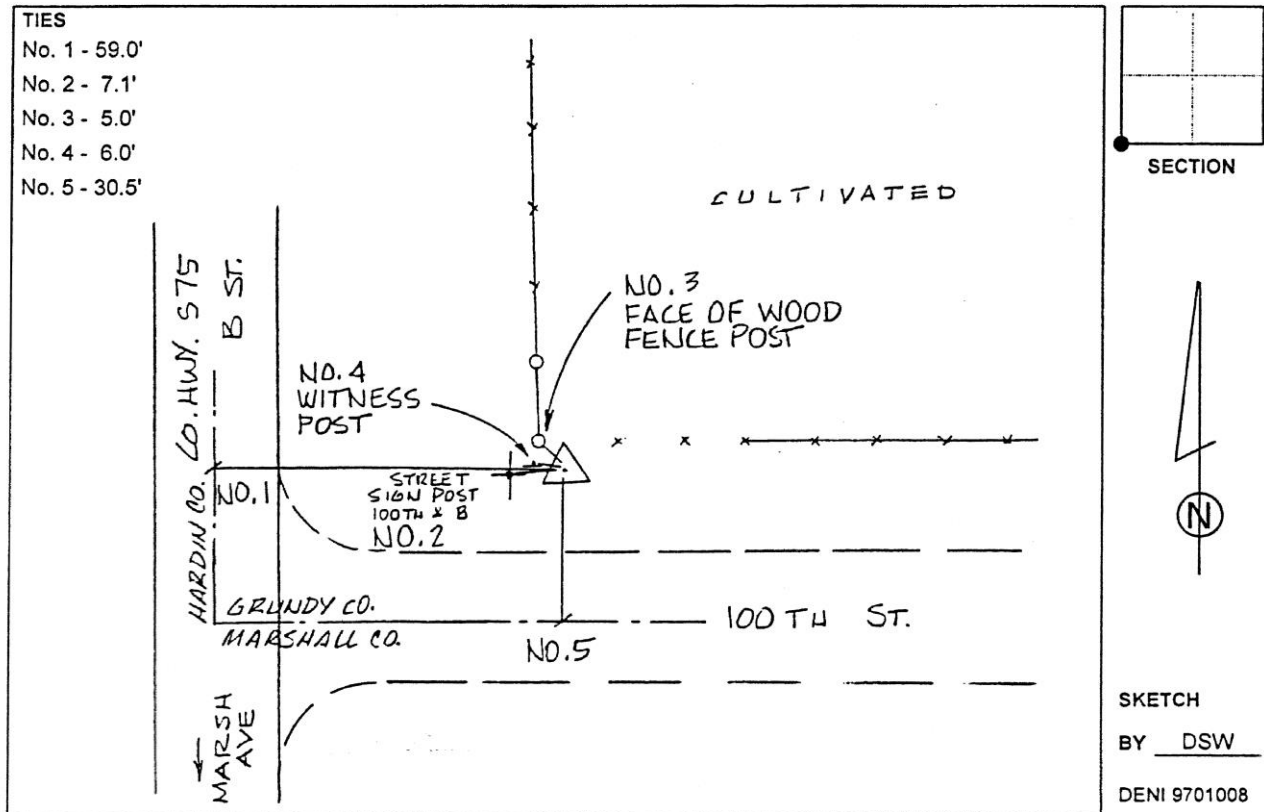
**Designation:** 861831 3 (Set by Deni Associates in 1997)

NAD 83(NA2011) Latitude: **N42°12'33.66231"** Longitude: **W93°00'05.21486"**  
 NAVD 88 Ortho Height: **935.820sft** Ellip. Ht: **832.076sft** Geoid12B

**Iowa North Zone (1401)** Northing: **3539734.901sft** Easting: **5056317.056sft**  
 Mapping Angle: **0°20'16"** Combination Scale Factor: **0.9999373876**

**IaRCS Zone 4** Northing: **8487286.603sft** Easting: **14996298.188sft**  
 Mapping Angle: **1°14'18"** Combination Scale Factor: **1.0000211242**

**Monument Type:** 3-1/4" aluminum disk set in the top of a 12" dia. poured-in-place concrete monument.



*This document was prepared by Dan Corbin, Inc. on February 18<sup>th</sup>, 2019 for Hardin County, Iowa.*