

Hardin County, Iowa
Horizontal Datum: **NAD 83(NA2011)** - Vertical Datum: **NAVD 1988**
Iowa State Plane North Zone (1401)
Iowa Regional Coordinate System, Zone 4, Sioux City-Iowa Falls LCC
US Survey Feet
9/30/18

Point Name: **7080**

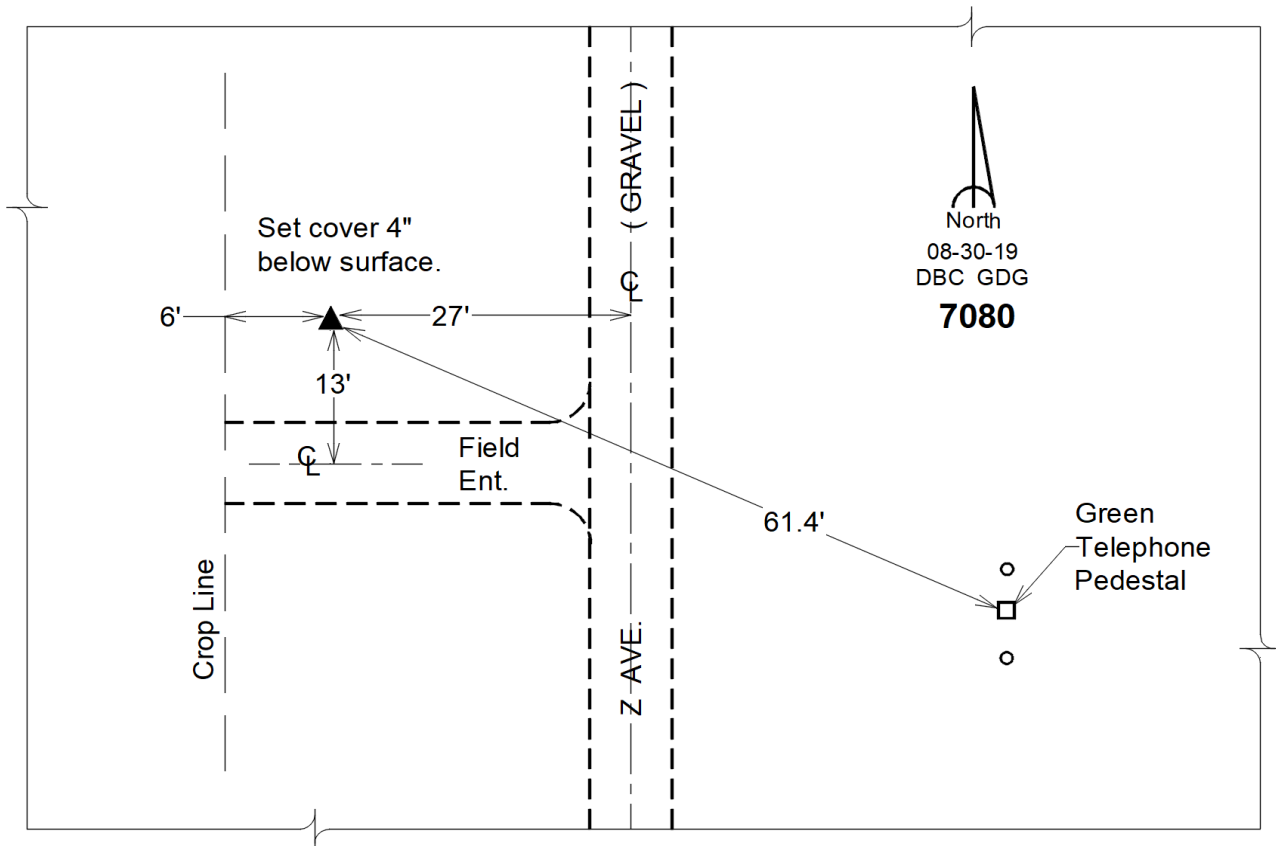
Designation: Grundy County 7080 (Set by DCI in 2018)

NAD 83(NA2011) Latitude: **N42°25'29.75477"** Longitude: **W93°00'10.41468"**
NAVD 88 Ortho Height: **1130.056sft** Ellip. Ht: **1026.160sft** **Geoid12B**

Iowa North Zone (1401) Northing: **3618293.403sft** Easting: **5055463.787sft**
Mapping Angle: **0°20'13"** Combination Scale Factor: **0.9999052467**

IaRCS Zone 4 Northing: **8565828.913sft** Easting: **14994210.213sft**
Mapping Angle: **1°14'15"** Combination Scale Factor: **0.9999977288**

Monument Type: Berntsen "Top Security" aluminum rod monument with a 2-1/2" dia. survey cap and permanent magnet encased in a white PVC pipe with a NGS style aluminum access cover.



This document was prepared by Dan Corbin, Inc. on February 18th, 2019 for Hardin County, Iowa.